

241 Deansgate, Manchester, Lancashire, M3 4EL
Tel: 0161 637 8336
Email: contactus@ascendproperties.com
www.ascendproperties.com

Ascend

Built on higher standards



9 Whitworth Street West, Manchester

£850 PCM

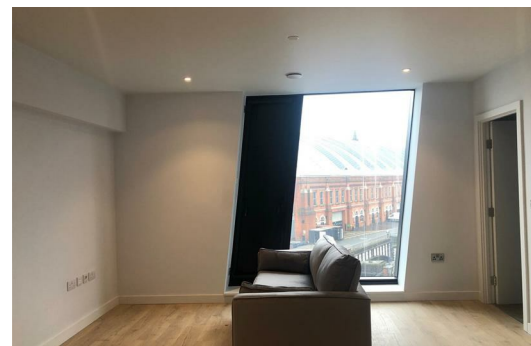
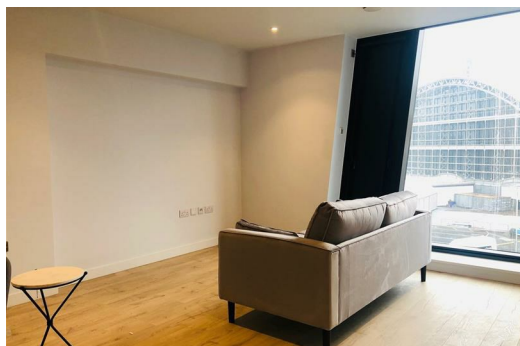
Say Hello to Axis Tower, Manchester's most prestigious, iconic living space home to your new one-bedroom apartment. With floor-to-ceiling windows that make up the entire building, and striking angles that form the most eye-catching architecture, this development really is the hottest address in town. Ideal for a couple or a single, this stylish apartment is available to move in right now.

Standing 28 crystal storeys high, this statement of a tower offers exceptional views of the city and beyond. Life's pretty good on the ground floor to, you'll have the very best of Deansgate Locks nightlife on your doorstep, as well as all the city's hotspots within arm's reach. What's more, this stunning building has been developed by the renowned Alliance Investments.

Step inside this brand new, furnished pad and you'll be amazed at the space. The spacious lounge is based with premium wooden flooring and enhanced by the endless natural light coming in from the windows. The angled shape of the windows makes a superb effect on the interior and really emphasises Axis Tower's character. Featuring integrated appliances and sleek units, the kitchen is a stylish place to cook up a feast for you and your friends.

With dark coloured wardrobes, furniture and grey carpeting, the bedroom adds to this apartment's premium vibe, as well as offering cracking views of the city. As for the bathroom, think sophisticated design with wall mounted mirrors and an essential rain-shower.

Location wise, you could not ask for anything more. Literally within seconds you've got nightclubs, restaurants and the comedy store. Did we mention the well-connected transport links? Deansgate Castlefield Metrolink is basically at





Ascend
Built on higher standards