



Woods House, 7 Gatliff Road  
London SW1W

GARTON JONES.COM



# Woods House, 7 Gatliff Road London, SW1W

GARTON JONES.COM

8 Gatliff Road  
Chelsea  
London  
SW1W 8DP

Sales +44 (0) 20 7730 5007  
gws@gartonjones.com  
www.gartonjones.com

## £535,000

A one DOUBLE BEDROOM apartment available for SALE of approx. 498sq.ft (46.3sqm) on the eleventh floor (with lift) of Woods House, a secure building forming part of the popular GROSVENOR WATERSIDE development in Chelsea. This bright property boasts fantastic panoramic views of the London skyline, where you can take in the City's iconic landmarks. Further benefits include an OPEN PLAN reception room with a Juliette style balcony, a smart kitchen, a bathroom and storage including built in wardrobes to the bedroom. On-site Sainsbury's Local, coffee shop and private kids club. SLOANE SQUARE and VICTORIA station with access to Gatwick Express trains are within walking distance. Available via Garton Jones' on-site office at Grosvenor Waterside (underneath Bramah House).

- 498 sq.ft (46.3sq.m)
- 1 Double Bedroom
- Open Plan Reception Room
- Modern Integrated Kitchen
- Modern Bathrooms
- 24 Hour Concierge
- Juliet Style Balcony
- On-Site Sainsbury's, Creche, Coffee Shop & Purple Dragon Private Kids Club
- Close to Local Amenities Including Shops, Restaurants & Transport Link
- Walking Distance to Sloane Square & Victoria Station



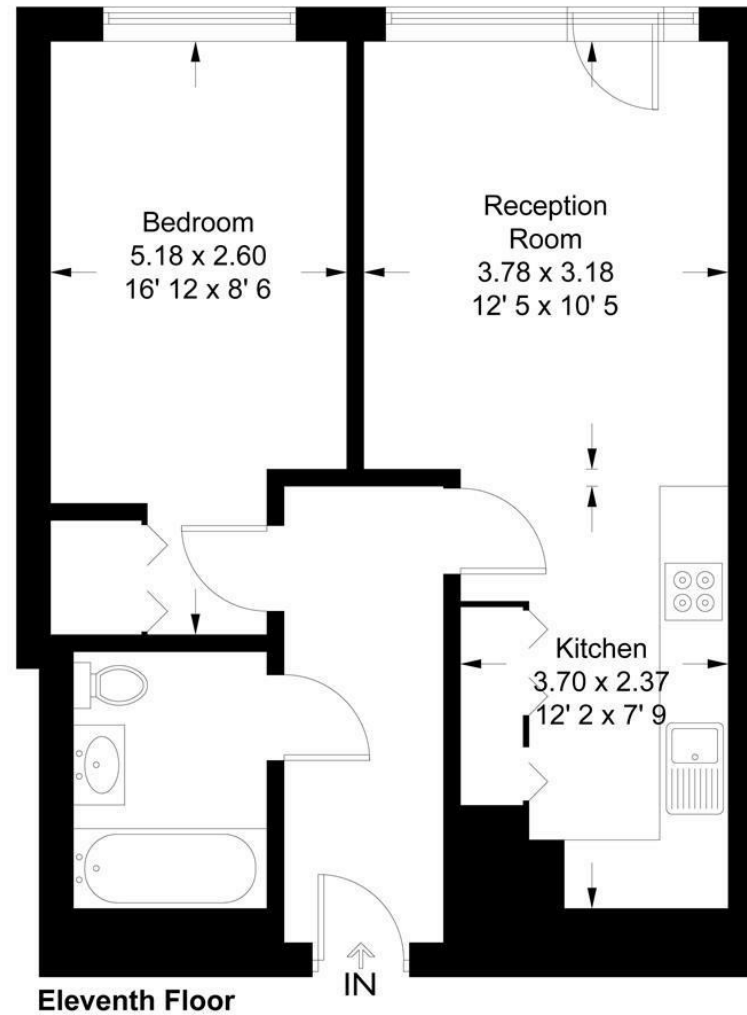
OR available to purchase 25% share. Ex. Rent  
£794.11 per month on the 75% share)

EWS1 completed  
Estimated service charge is £3,329.88 (this  
included water, heating and ground rent)  
Leasehold — approx. 110 years remaining

EPC certificate available on request.

**Woods House**

Approximate Gross Internal Area = 505 sq ft / 47 sq m



Not to scale, for guidance only and must not be relied upon as a statement of fact  
All measurements and areas are approximate only and have been prepared in  
accordance with the current edition of the RICS Code of Measuring Practice

