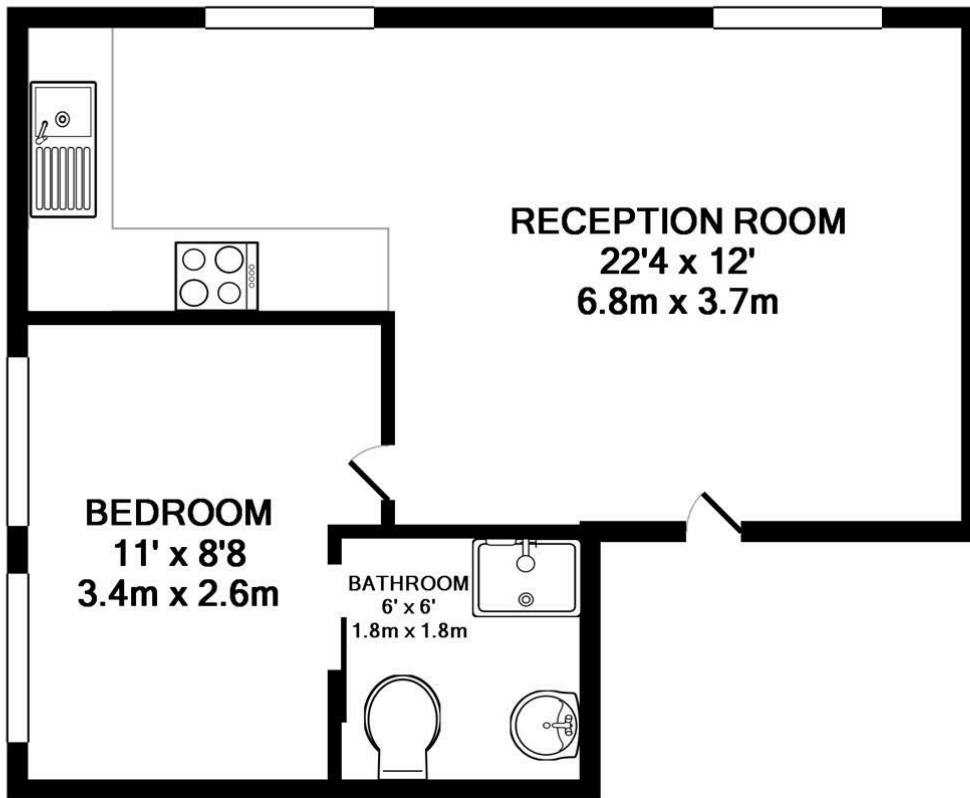


**Laurel Avenue
Twickenham
TW1 4JA**

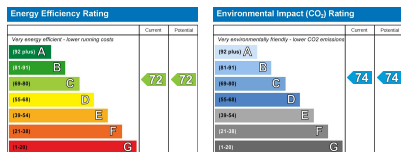
£1,075

ChaseBuchanan





TOTAL APPROX. FLOOR AREA 349 SQ.FT. (32.4 SQ.M.)
Made with Metropix ©2016



Care has been taken in the preparation of these particulars, however, their accuracy is not guaranteed and they do not form part of any contract. Measurements stated must be considered maximum.

- Bright and spacious
- Central location
- Fitted wardrobes
- Modern interior
- Gas heating
- EPC D

Move in, unpack your belongings and put your feet up in this lovely spacious apartment.

Completely remodelled throughout with the benefit of a new bathroom and kitchen, a spacious and bright living room and good size bedroom with fitted wardrobes, this property will tick a lot of boxes.

Located in a popular road just off the high street, close to the many bars, restaurants and shops with Twickenham station just 0.4 miles away.

Chase Buchanan are bonded members of ARLA (Association of Residential Letting Agents).

For more information or to book a viewing, please contact:

020 8744 2111

ChaseBuchanan

122 Heath Road, Twickenham, Middlesex, TW1 4BW