



FOR SALE
020 7237 8593
www.oj.co.uk

AMBROSE STREET SE16

020 7237 8593

SAM'S
GENTS HAIRDRESSERS

SAM'S
GENTS HAIRDRESSERS

020 7237 8593

NASH OPTICIANS
SIGHT TESTING - CONTACT LENSES

ETOCOS

OFF LICENCE

Ambrose Street, Bermondsey

Asking Price £380,000 Leasehold

OLIVER O J JAQUES
EST. 1986



Ambrose Street, Bermondsey

This conveniently located three bedroomed property has just undergone a full refurbishment and offers 910sqft of accommodation spread over two floors. The property is part of a small development of just three maisonettes and is located at the heart of Bermondsey's historic Blue Market. Fully double glazed and with a brand new central heating system throughout, this beautiful home is ready for immediate occupation and would suit a first time buyer looking to enjoy the convenient proximity to the Jubilee Line at Bermondsey station as South Bermondsey's railway station as well as the fashionable bars and eateries of nearby Shad Thames and Borough Market.

- Three Double Bedrooms
- Duplex Maisonette
- Fully Refurbished
- Town Centre Location
- Fully Double Glazed
- Gas Central Heating

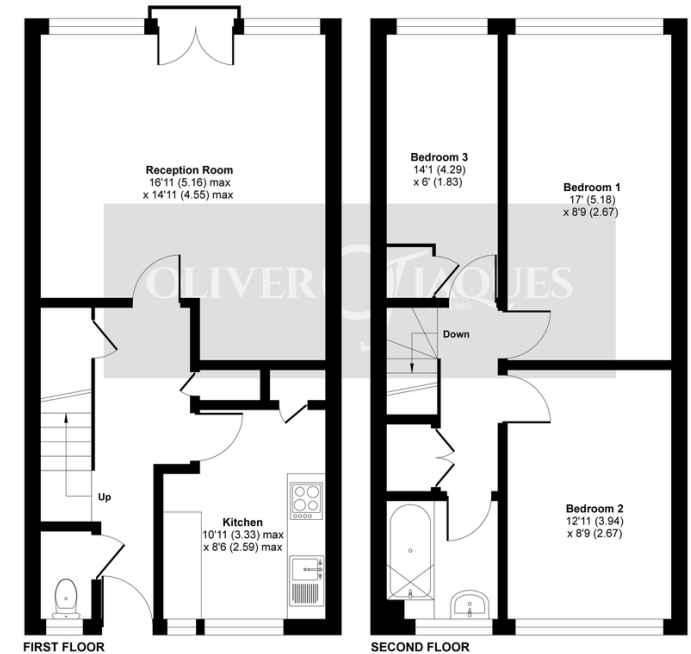
South East London
020 7231 5050

Email southeast@o-j.co.uk

229-231 Lower Road, London, SE16 2LW

web www.o-j.co.uk

Every care has been taken with the preparation of this brochure but it is for general guidance only and complete accuracy cannot be guaranteed. If there is any point, which is of importance professional verification should be sought. This brochure does not constitute a contract or part of a contract. We are not qualified to verify tenure of property. Prospective purchasers should seek clarification from their solicitor or verify the tenure of this property for themselves by visiting www.gov.uk/government/organisations/land-registry. The mention of any appliances, fixtures or fittings does not imply they are in full working order. Photographs are reproduced for general information and it cannot be inferred that any item shown is included in the sale. All dimensions are approximate. Walking times are taken from Google Maps and measured from the centre of the postcode, which may differ from the individual property. We always refer prospective buyers to our panelled conveyancers and Chancery Mortgage Services Ltd. It is your decision whether to use them. Should you decide to do so you should know that we could receive a referral fee from them for recommending them to you.



Floor plan produced in accordance with RICS Property Measurement Standards incorporating International Property Measurement Standards (IPMS2 Residential). © richcom 2020. Produced for Oliver Jacques - REF: 640512

Energy Efficiency Rating		Current	Potential
Very energy efficient - lower running costs			
(92-100)	A		
(81-91)	B		
(69-80)	C		77
(55-68)	D	66	