



SIMPLE LIFE



EARLE STREET
NEWTON-LE-WILLOWS
WA12 9XD



CONTENTS

- LOCAL INFORMATION 4
- LOCATION MAP..... 5
- SITE MAP..... 6
- PROPERTY INFORMATION
 - WEAVER - 3 BEDROOM HOME.....8
 - WEAVER UP - 3 BEDROOM HOME10
 - GRANTHAM - 3 BEDROOM HOME.....12
 - ELLESMERE - 3 BEDROOM HOME14
 - ELLESMERE UP - 3 BEDROOM HOME16
 - DEE - 4 BEDROOM HOME18
 - ROWAN - 2 BEDROOM APARTMENT20
 - ALDER - 2 BEDROOM APARTMENT22
 - ROOSEVELT - 1 BEDROOM APARTMENT24
- TESTIMONIALS26
- TENANT FEES37
- COMMUNITY ENGAGEMENT.....28
- ABOUT US28
- OUR SPEC29

EARLE STREET

OUR HOMES AT EARLE STREET ARE SET IN THE WESTERN PART OF NEWTON-LE-WILLOWS IN THE AREA OF EARLESTOWN WHICH OWES ITS EXISTENCE TO THE LIVERPOOL AND MANCHESTER RAILWAY. OUR STUNNING 3 & 4 BEDROOM HOMES AND 1 & 2 BEDROOM APARTMENTS ARE PERFECT SPACES FOR COMFORTABLE LIVING.



LOCATION INFORMATION

The area has a small, yet busy town centre with an array of good local amenities, including a large Tesco superstore, a medical centre, post office, local market and other popular high street shops, pubs and restaurants. Earlestown is also home to its local favourite, 'curry quarter-of-the-mile', which offers a selection of Indian and Tandoori restaurants.

Sankey Valley Park is situated only 2 miles away from the development – the perfect peaceful setting for an afternoon stroll.

For families, the area holds the key to excellent education (and a wide choice at that!), with 39 primary and secondary schools boasting an 'Outstanding' or 'Good' Ofsted rating, all within a 3 mile radius of our development!



EARLE STREET LOCATION MAP



EARLE STREET SITE MAP



EXCLUSIVELY FOR RENT



Images for demonstrational purposes only. Spec and decor may differ.

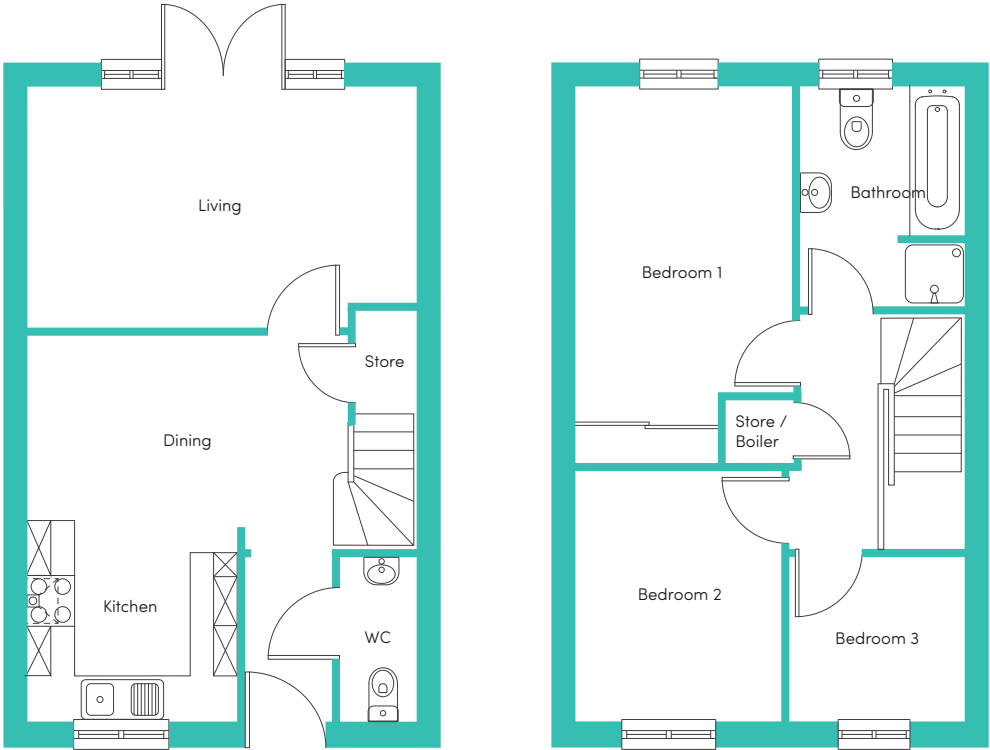
WEAVER 3 BEDROOM HOME

The Weaver is a beautifully designed, modern three bedroom family home. The downstairs offers an open plan kitchen/dining area with a range of contemporary fitted cabinets with integrated appliances. To the rear of the house the living room has a set of French windows which overlook and open onto the back garden, creating a light and spacious environment.

Upstairs there is a generously proportioned main bedroom with fitted, mirrored wardrobes. Additionally there are two further bedrooms to the front of the house as well as a family bathroom, offering great space for young couples and families alike.

THE PROPERTY INCLUDES:

- Parking space
- Security alarm system
- Fitted wardrobes to main bedroom
- Dishwasher
- Fridge freezer
- Washing/drying machine
- Oven and hob
- Light wash wood effect flooring
- Dark worktops
- Modern, white kitchen units
- Light wood or white interior doors
- Light grey carpets in the bedrooms and stairs
- Outside taps for watering the garden
- Patio area in the private back garden



WEAVER 3 BEDROOM HOME

GROUND FLOOR

Kitchen/Dining
4.04 x 4.89m (13'3" x 16'1")†
Living
4.92 x 3.08m (16'2" x 10'2")†

FIRST FLOOR

Bedroom 1
2.80 x 4.79m (9'2" x 15'9")†
Bedroom 2
2.64 x 3.19m (8'8" x 10'6")
Bedroom 3
2.22 x 2.09m (7'3" x 6'10")
Bathroom
2.05 x 2.82m (6'9" x 9'3")

These measurements may vary slightly by plot. The external elevations, architectural detailing and floor plans of individual house types may vary from those illustrated. All room sizes are approximate with maximum dimensions. While every effort has been made to ensure that the information contained in this leaflet is correct, it is designed specifically as a guide and we reserve the right to amend the specifications as necessary and without notice. These particulars do not wholly or in part constitute a contract or agreement and are for general guidance only. Images are indicative only. † Denotes longest measurement taken.

EXCLUSIVELY FOR RENT



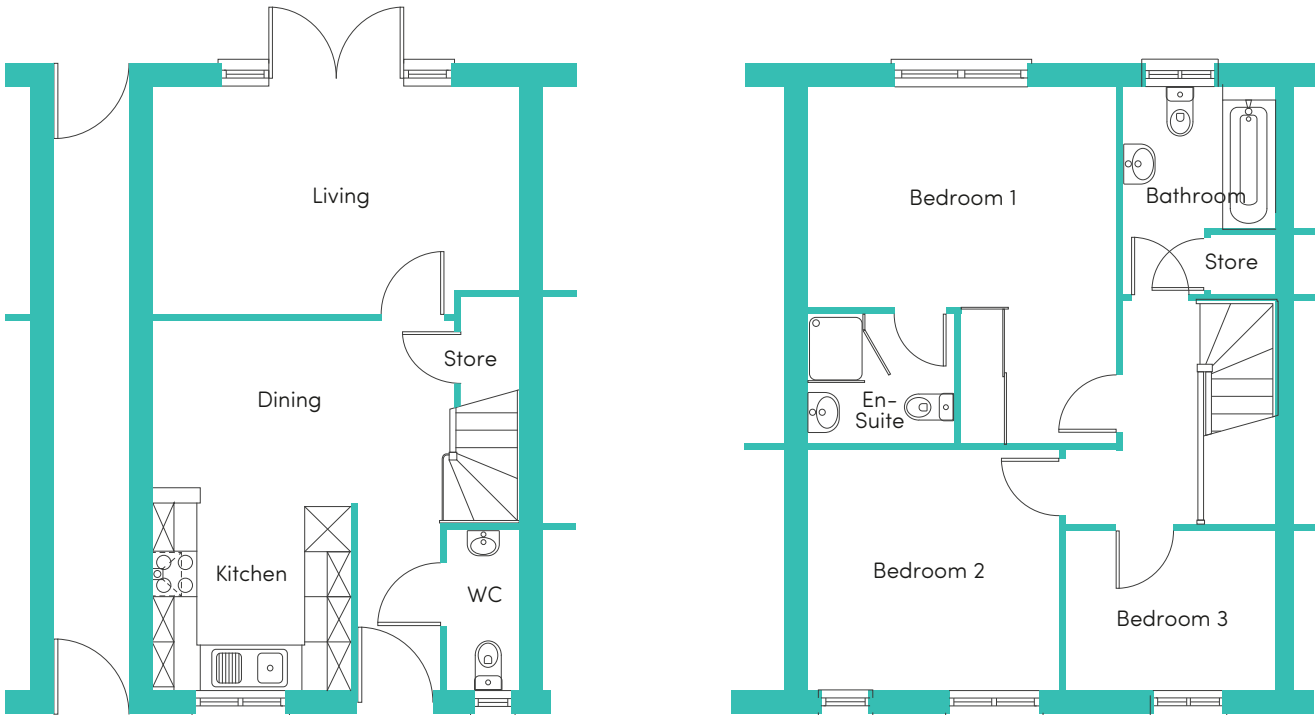
Images for demonstrational purposes only. Spec and decor may differ.

WEAVER UP 3 BEDROOM HOME

The Weaver UP is a beautifully designed, three bedroom family home. The downstairs offers an open plan kitchen/dining area with a range of contemporary fitted cabinets with integrated appliances. To the rear of the house the living room has a set of French windows which overlook and open onto the back garden, creating a light and spacious environment.

The Weaver UP includes an underpass, which means that there is a little extra space to the upstairs of the property, which features a large main bedroom with en-suite shower room, two further bedrooms to the front of the house, plus an additional family bathroom, offering the perfect space for young couples and families alike.

- THE PROPERTY INCLUDES:
- Parking space
 - Security alarm system
 - Fitted wardrobes to main bedroom
 - Dishwasher
 - Fridge freezer
 - Washing/drying machine
 - Oven and hob
 - Light wash wood effect flooring
 - Dark worktops
 - Modern, white kitchen units
 - Light wood or white interior doors
 - Light grey carpets in the bedrooms and stairs
 - Outside taps for watering the garden
 - Patio area in the private back garden



WEAVER UP 3 BEDROOM HOME

GROUND FLOOR

Kitchen/Dining
4.11 x 4.89m (13'6" x 16'1")†

Living
5.01 x 3.09m (16'6" x 10'2")

FIRST FLOOR

Bedroom 1
4.15 x 2.99m (13'8" x 9'10")

Bedroom 2
3.99 x 3.19m (13'1" x 10'6")

Bedroom 3
2.22 x 2.09m (7'3" x 6'10")

Bathroom
2.05 x 2.82m (6'9" x 9'3")

These measurements may vary slightly by plot. The external elevations, architectural detailing and floor plans of individual house types may vary from those illustrated. All room sizes are approximate with maximum dimensions. While every effort has been made to ensure that the information contained in this leaflet is correct, it is designed specifically as a guide and we reserve the right to amend the specifications as necessary and without notice. These particulars do not wholly or in part constitute a contract or agreement and are for general guidance only. Images are indicative only. † Denotes longest measurement taken.

EXCLUSIVELY FOR RENT



Images for demonstrational purposes only. Spec and decor may differ.

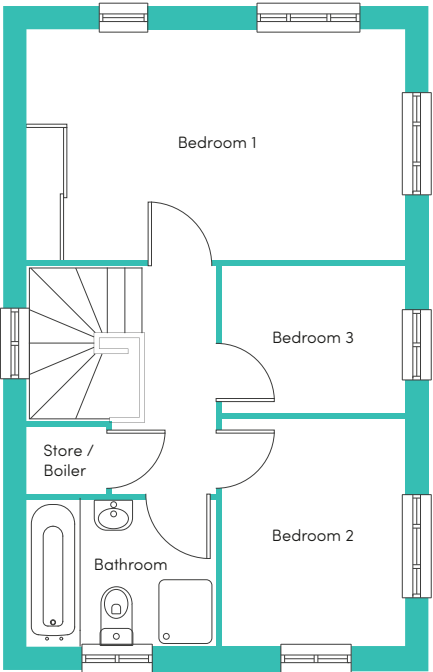
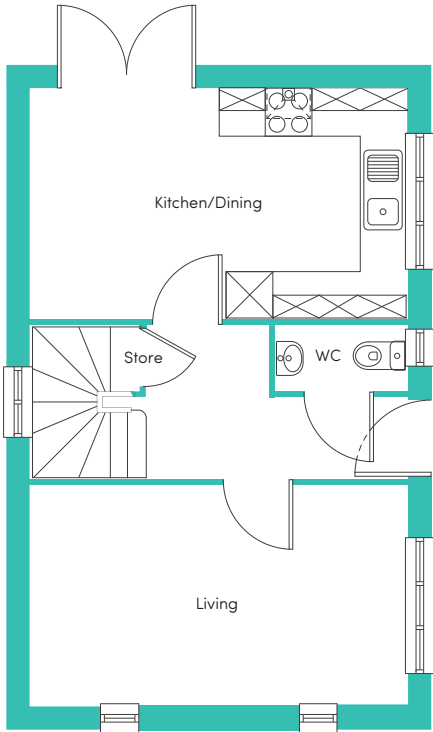
GRANTHAM 3 BEDROOM HOME

The welcoming central hallway of the Grantham sits in between the living room and the kitchen. A house designed with you in mind, the spacious lounge provides the perfect area to relax, whilst the dining/kitchen area provides a great place to spend time and entertain with its French windows opening on to the garden. A WC is conveniently situated off the hallway, completing the downstairs.

Upstairs, the house has a large main bedroom with fitted, mirrored wardrobes, and a further two bedrooms. A stylish family bathroom with a separate bath and shower provides the best of both worlds, whilst a store room on the landing provides a space to store bits and pieces.

THE PROPERTY INCLUDES:

- Parking space
- Security alarm system
- Fitted wardrobes to main bedroom
- Dishwasher
- Fridge freezer
- Washing/drying machine
- Oven and hob
- Light wash wood effect flooring
- Dark worktops
- Modern, white kitchen units
- Light wood or white interior doors
- Light grey carpets in the bedrooms and stairs
- Outside taps for watering the garden
- Patio area in the private back garden



GRANTHAM 3 BEDROOM HOME

GROUND FLOOR

Kitchen/Dining
4.92 x 2.98m (16'2" x 9'10")

Living
4.92 x 2.88m (16'2" x 9'6")

FIRST FLOOR

Bedroom 1
4.92 x 2.98m (16'2" x 9'9")

Bedroom 2
2.40 x 3.02m (7'10" x 9'11")

Bedroom 3
2.40 x 1.90m (7'10" x 6'3")

Bathroom
2.46 x 1.98m (8'1" x 6'6")

These measurements may vary slightly by plot. The external elevations, architectural detailing and floor plans of individual house types may vary from those illustrated. All room sizes are approximate with maximum dimensions. While every effort has been made to ensure that the information contained in this leaflet is correct, it is designed specifically as a guide and we reserve the right to amend the specifications as necessary and without notice. These particulars do not wholly or in part constitute a contract or agreement and are for general guidance only. Images are indicative only. † Denotes longest measurement taken.

EXCLUSIVELY FOR RENT



Images for demonstrational purposes only. Spec and decor may differ.

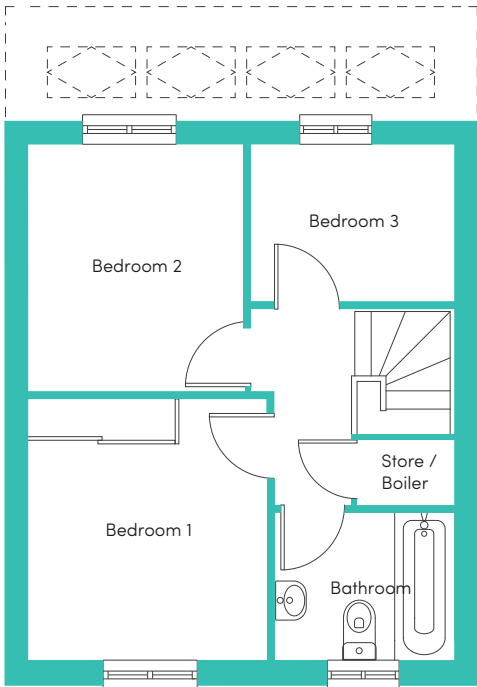
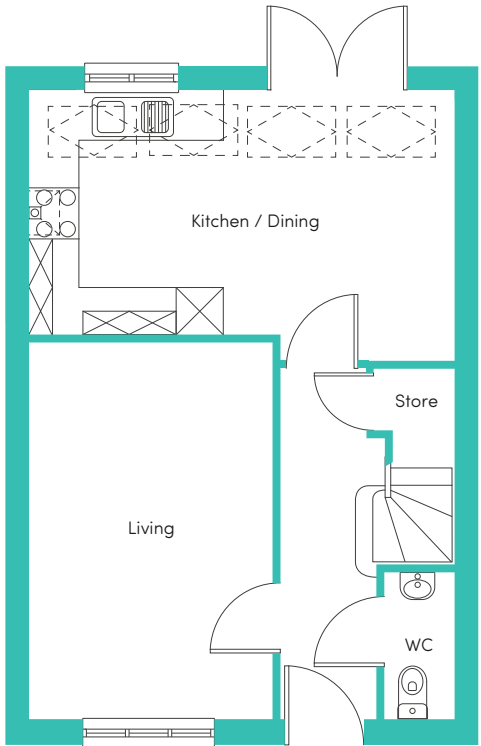
ELLESMERE 3 BEDROOM HOME

The Ellesmere is a stunning home built with your needs in mind. Downstairs, there is a generous living room, hallway and WC. The rear of the property has a magnificent living/kitchen area with a range of contemporary fitted units with integrated appliances. The room has French windows opening onto and overlooking the rear garden as well as a series of skylights which flood the room with light – an ideal space for both family time and entertaining.

Upstairs there is a spacious family bathroom complete with a bath and shower, the main bedroom is with fitted, mirrored wardrobes and two further well-proportioned bedrooms. At the top of the stairs you will also find a handy store cupboard.

THE PROPERTY INCLUDES:

- Parking space
- Security alarm system
- Fitted wardrobes to main bedroom
- Dishwasher
- Fridge freezer
- Washing/drying machine
- Oven and hob
- Light wash wood effect flooring
- Dark worktops
- Modern, white kitchen units
- Light wood or white interior doors
- Light grey carpets in the bedrooms and stairs
- Outside taps for watering the garden
- Patio area in the private back garden



ELLESMERE 3 BEDROOM HOME

GROUND FLOOR

Kitchen/Dining
5.42 x 3.45m (17'10" x 11'4")†

Living
3.09 x 4.83m (10'2" x 15'11")

FIRST FLOOR

Bedroom 1
3.04 x 3.36m (10'0" x 11'0")

Bedroom 2
2.74 x 3.16m (9'0" x 10'5")

Bedroom 3
2.61 x 2.00m (8'7" x 6'7")

Bathroom
2.31 x 1.92m (7'7" x 6'4")

These measurements may vary slightly by plot. The external elevations, architectural detailing and floor plans of individual house types may vary from those illustrated. All room sizes are approximate with maximum dimensions. While every effort has been made to ensure that the information contained in this leaflet is correct, it is designed specifically as a guide and we reserve the right to amend the specifications as necessary and without notice. These particulars do not wholly or in part constitute a contract or agreement and are for general guidance only. Images are indicative only. † Denotes longest measurement taken.

EXCLUSIVELY FOR RENT



Images for demonstrational purposes only. Spec and decor may differ.

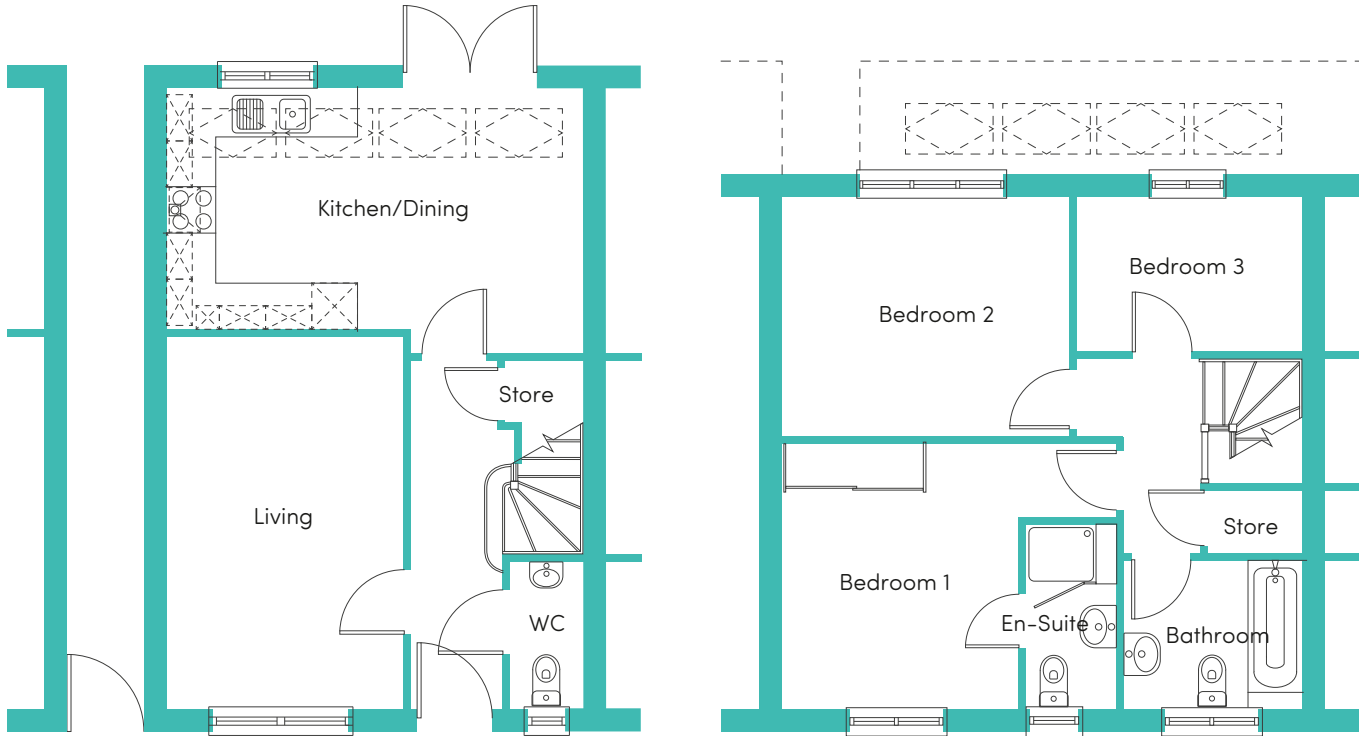
ELLESMERE UP 3 BEDROOM HOME

The Ellesmere UP is a stunning home built with your needs in mind. Downstairs there is a generous living room, hallway and WC. The rear of the property has a magnificent living/kitchen area with a range of contemporary fitted units with integrated appliances. The room has French windows opening onto and overlooking the rear garden as well as a series of skylights which flood the room with light – an ideal space for both family time and entertaining.

Unlike the regular Ellesmere, the Ellesmere UP includes an underpass, which means that there is a little more space upstairs. The first floor has a spacious family bathroom complete with both bath and shower, a main bedroom suite with shower room and fitted, mirrored wardrobes. You will also find two further well-proportioned bedrooms and a handy boiler/store cupboard just off the hallway.

THE PROPERTY INCLUDES:

- Parking space
- Security alarm system
- Fitted wardrobes to main bedroom
- Dishwasher
- Fridge freezer
- Washing/drying machine
- Oven and hob
- Light wash wood effect flooring
- Dark worktops
- Modern, white kitchen units
- Light wood or white interior doors
- Light grey carpets in the bedrooms and stairs
- Outside taps for watering the garden
- Patio area in the private back garden



ELLESMERE UP 3 BEDROOM HOME

GROUND FLOOR

Kitchen/Dining
5.42 x 3.45m (17'10" x 11'4")†

Living
3.09 x 4.83m (10'2" x 15'11")

FIRST FLOOR

Bedroom 1
3.07 x 3.42m (10'1" x 11'3")

Bedroom 2
3.76 x 3.09m (12'4" x 10'2")

Bedroom 3
2.94 x 2.00m (9'8" x 6'7")

Bathroom
2.33 x 1.92m (7'8" x 6'4")

These measurements may vary slightly by plot. The external elevations, architectural detailing and floor plans of individual house types may vary from those illustrated. All room sizes are approximate with maximum dimensions. While every effort has been made to ensure that the information contained in this leaflet is correct, it is designed specifically as a guide and we reserve the right to amend the specifications as necessary and without notice. These particulars do not wholly or in part constitute a contract or agreement and are for general guidance only. † Denotes longest measurement taken.

EXCLUSIVELY FOR RENT



Images for demonstrational purposes only. Spec and decor may differ.

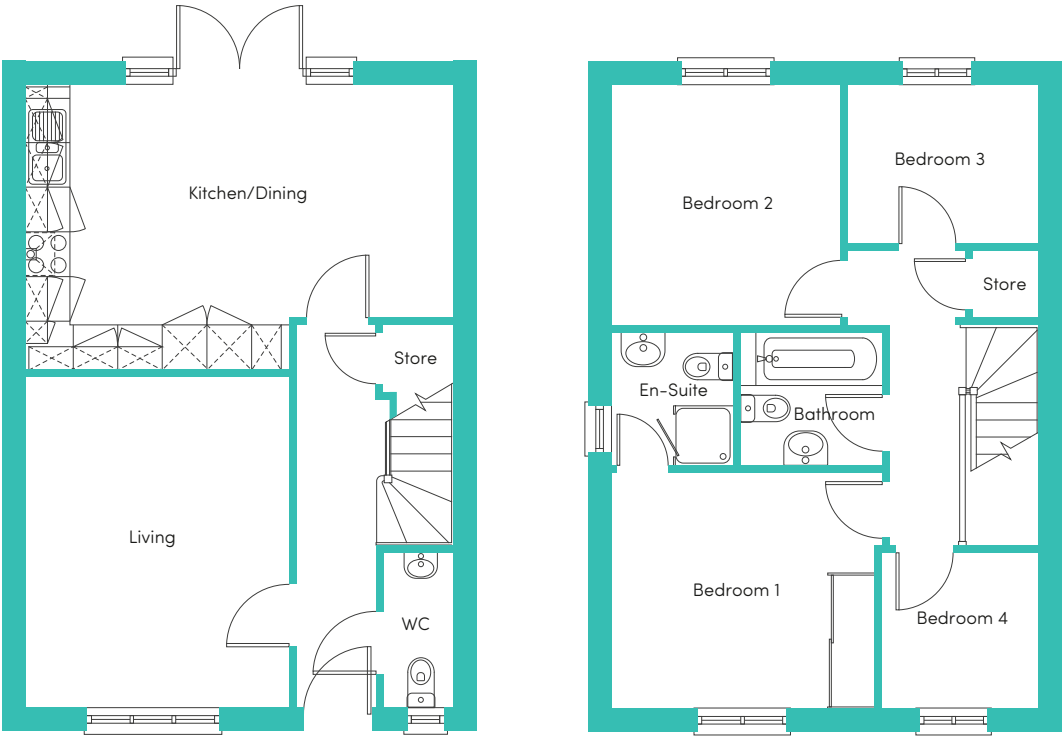
DEE 4 BEDROOM HOME

The Dee is a beautiful four bedroom modern home, built over two levels.

Downstairs there is a large living room, WC and hallway leading to the rear of the property where you will find a stunning kitchen/dining area equipped with integrated kitchen appliances and contemporary units. The kitchen/dining area also benefits from French windows which take you into your own private rear garden.

Upstairs you will find a family sized bathroom including a stylish white bathroom suite and four bedrooms – two doubles and two singles. The main bedroom benefits from built-in wardrobes and an en-suite bathroom fitted with its own shower and cubicle.

- THE PROPERTY INCLUDES:
- Parking space
 - Security alarm system
 - Fitted wardrobes to main bedroom
 - Dishwasher
 - Fridge freezer
 - Washing/drying machine
 - Oven and hob
 - Light wash wood effect flooring
 - Dark worktops
 - Modern, white kitchen units
 - Light wood or white interior doors
 - Light grey carpets in the bedrooms and up the stairs
 - Outside taps for watering the garden
 - Patio area in the private back garden



DEE 4 BEDROOM HOME

GROUND FLOOR

Kitchen/Dining
5.91 x 3.85m (19'5" x 12'8")†

Living
3.53 x 4.42m (11'7" x 14'6")

FIRST FLOOR

Bedroom 1
3.21 x 3.15m (10'6" x 10'4")

Bedroom 2
3.10 x 3.25m (10'2" x 10'8")

Bedroom 3
2.73 x 2.14m (9'0" x 7'1")

Bedroom 4
2.63 x 2.08m (8'8" x 6'10")

Bathroom
1.82 x 1.93m (6'0" x 6'4")

*These measurements may vary slightly by plot. The external elevations, architectural detailing and floor plans of individual house types may vary from those illustrated. All room sizes are approximate with maximum dimensions. While every effort has been made to ensure that the information contained in this leaflet is correct, it is designed specifically as a guide and we reserve the right to amend the specifications as necessary and without notice. These particulars do not wholly or in part constitute a contract or agreement and are for general guidance only. †Denotes longest measurement taken.

EXCLUSIVELY FOR RENT



Images for demonstrational purposes only. Spec and decor may differ.

ROWAN 2 BEDROOM APARTMENT

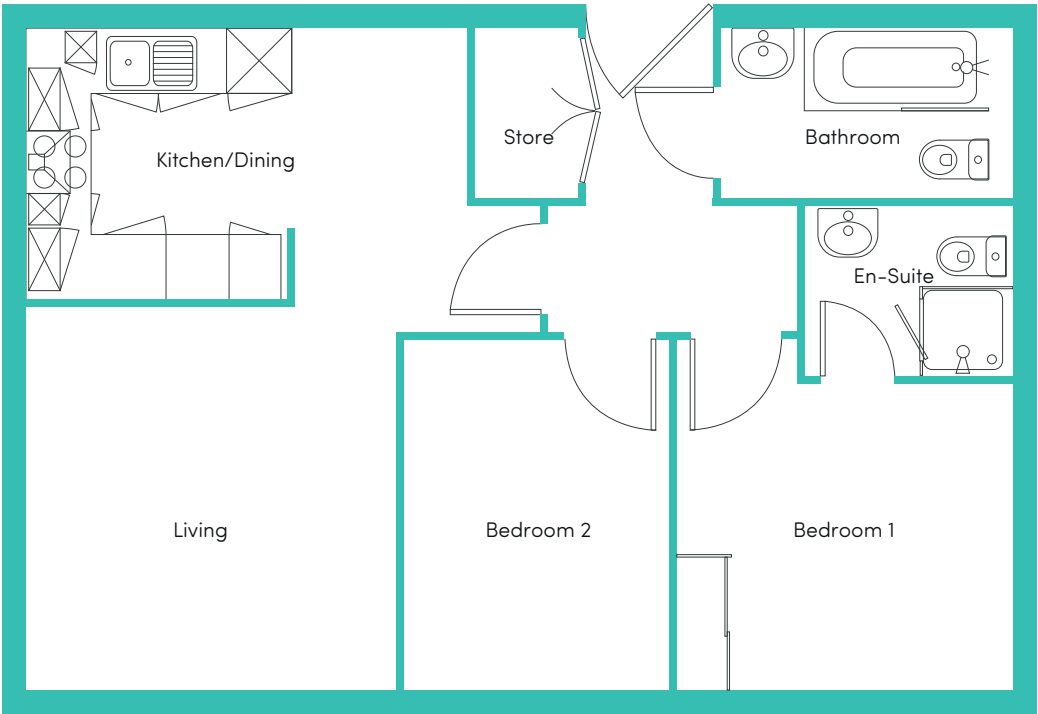
This two double bedroom apartment has loads to offer! Its kitchen/ dining area creates the perfect space for mealtime whilst its separate spacious living room creates a lovely area to relax.

With one bedroom benefiting from an en-suite bathroom and an additional full bathroom suite and storage cupboard located in the hallway, this apartment will work perfectly for friends looking to live together but wanting a little extra space or young families looking for their first home.

With integrated kitchen appliances, including a washing machine, dishwasher and hob/oven, isn't it time for you to start living the Simple Life?

THE PROPERTY INCLUDES:

- Allocated parking space
- Fitted wardrobes to master bedroom
- Dishwasher
- Fridge freezer
- Washing/drying machine
- Oven and hob
- Light wash wood effect flooring
- Dark worktops
- Modern, white kitchen units
- Light wood or white interior doors
- Light grey carpets in the bedrooms
- White blinds in bedrooms
- Full length grey curtains in living area



ROWAN 2 BEDROOM APARTMENT

Kitchen/Dining 4.12 x 2.58m (13'6" x 8'6")	Bedroom 1 3.12 x 2.86m (10'3" x 9'5")	Bathroom 2.72 x 1.64m (8'11" x 5'5")
Living 3.49 x 3.54m (11'6" x 11'8")	Bedroom 2 2.40 x 3.27m (7'10" x 10'9")	

These measurements may vary slightly by plot. The external elevations, architectural detailing and floor plans of individual house types may vary from those illustrated. All room sizes are approximate with maximum dimensions. While every effort has been made to ensure that the information contained in this leaflet is correct, it is designed specifically as a guide and we reserve the right to amend the specifications as necessary and without notice. These particulars do not wholly or in part constitute a contract or agreement and are for general guidance only. Images are indicative only. † Denotes longest measurement taken.

EXCLUSIVELY FOR RENT



Images for demonstrational purposes only. Spec and decor may differ.

ALDER 2 BEDROOM APARTMENT

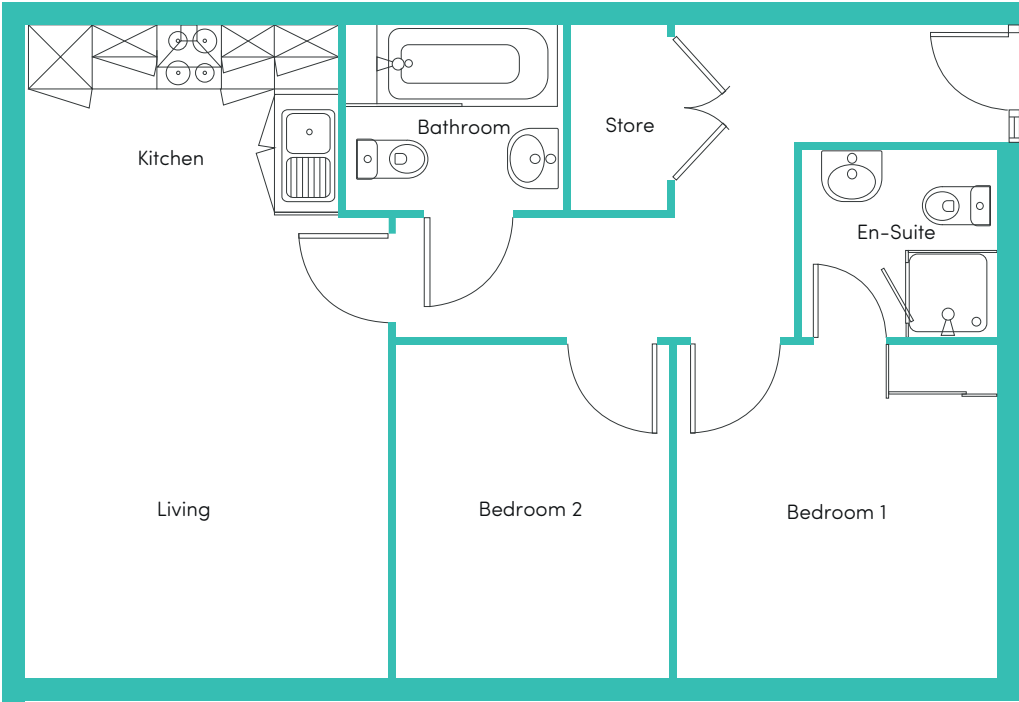
The two double bedroom Alder is a spacious apartment perfect for city living.

With an open plan kitchen/diner attached to a light and airy living room, it is the perfect space for entertaining guests.

Benefiting from two bathrooms – one en-suite and another full bathroom suite – the apartment is great for friends sharing or couples who enjoy having a little extra room.

Complete with integrated kitchen appliances, including a washing machine, dishwasher and hob/oven, isn't it time for you to start living the Simple Life?

- THE PROPERTY INCLUDES:
- Allocated parking space
 - Fitted wardrobes to master bedroom
 - Dishwasher
 - Fridge freezer
 - Washing/drying machine
 - Oven and hob
 - Light wash wood effect flooring
 - Dark worktops
 - Modern, white kitchen units
 - Light wood or white interior doors
 - Light grey carpets in the bedrooms
 - White blinds in bedrooms
 - Full length grey curtains in living area



ALDER 2 BEDROOM APARTMENT

Kitchen 3.04 x 1.80m (10'0" x 5'11")	Bedroom 1 3.01 x 3.14m (9'11" x 10'4")	Bathroom 1.96 x 1.80m (6'5" x 5'11")
Living 3.46 x 4.39m (11'5" x 14'5")	Bedroom 2 2.53 x 3.14m (8'4" x 10'4")	

These measurements may vary slightly by plot. The external elevations, architectural detailing and floor plans of individual house types may vary from those illustrated. All room sizes are approximate with maximum dimensions. While every effort has been made to ensure that the information contained in this leaflet is correct, it is designed specifically as a guide and we reserve the right to amend the specifications as necessary and without notice. These particulars do not wholly or in part constitute a contract or agreement and are for general guidance only. † Denotes longest measurement taken.

EXCLUSIVELY FOR RENT



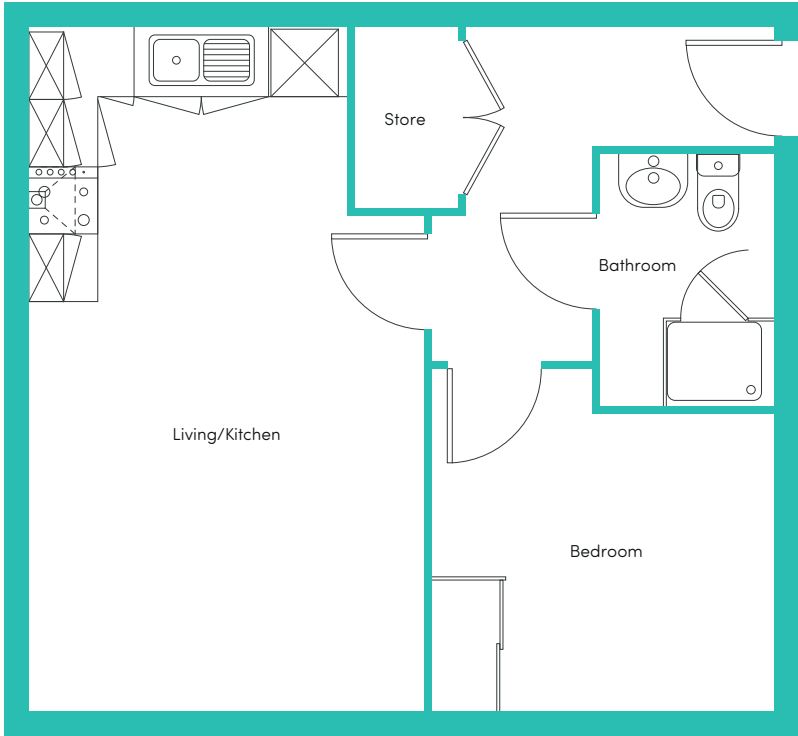
Images for demonstrational purposes only. Spec and decor may differ.

ROOSEVELT 1 BEDROOM APARTMENT

Introducing the Roosevelt apartment. This light, modern one bedroom apartment is the perfect size for someone living alone or a couple sharing. The Roosevelt features a contemporary open plan kitchen, living and dining area, a beautiful double bedroom with fitted wardrobe, and a sizeable bathroom.

This apartment comes with quality flooring throughout. Carpets included in the bedroom makes the space feel nice and cosy. The kitchen is fully-fitted with oven, hob, washing machine and fridge-freezer.

- THE PROPERTY INCLUDES:
- Allocated parking space
 - Fitted wardrobes to master bedroom
 - Dishwasher
 - Fridge freezer
 - Washing/drying machine
 - Oven and hob
 - Light wash wood effect flooring
 - Dark worktops
 - Modern, white kitchen units
 - Light wood or white interior doors
 - Light grey carpets in the bedrooms
 - White blinds in bedrooms
 - Full length grey curtains in living area



ROOSEVELT 1 BEDROOM APARTMENT

Bedroom 1	Bathroom
3.55 x 6.20m (11'8" x 20'4")†	21.60 x 2.25m (5'3" x 7'5")
Bedroom 1	
3.10 x 2.70m (10'2" x 8'11")	

These measurements may vary slightly by plot. The external elevations, architectural detailing and floor plans of individual house types may vary from those illustrated. All room sizes are approximate with maximum dimensions. While every effort has been made to ensure that the information contained in this leaflet is correct, it is designed specifically as a guide and we reserve the right to amend the specifications as necessary and without notice. These particulars do not wholly or in part constitute a contract or agreement and are for general guidance only. † Denotes longest measurement taken.

TESTIMONIALS

“

"I would recommend Simple Life to anyone. They are honestly a very caring landlord, you are a person to them, which is great and not what you get from a lot of landlords."

Charlie Say,
Simple Life customer

"It's a really satisfying feeling knowing Simple Life is looking after our needs and we don't have to worry. If we need to contact them they're always polite and understanding, listening to our concerns. As soon as we saw our house, we fell in love with it, we knew we had to have one."

Kelly Wood,
Simple Life customer

”



RESIDENT FEES

Permitted Payments under a Simple Life Assured Shorthold

In addition to your Rent, you may be expected to pay any or all of the below before, during, and after your tenancy in line with your Assured Shorthold Tenancy agreement and government legislation:

Fee Type	Details	Date Payable	Amount
Refundable Holding Deposit	A holding deposit will be required in order to secure the property. By paying this holding deposit you give your consent for this said holding deposit to be held on account until your first month's rent becomes due. (Typically within 90 days). The holding deposit will paid towards your first month's rent.	The holding deposit will be collected by Simple Life as soon as you have completed the referencing application form at which point the property will be removed from the market.	Equivalent to one week's rent rounded down to the nearest £10. e.g if your rent is £750 pcm then the holding deposit will be £170.
Simple Life may retain your holding deposit if: · You provide misleading information on your application form · You fail a Right to Rent Check · You change your mind about the property and withdraw your application · You have failed to take reasonable steps to enter into the tenancy			
Refundable Tenancy Deposit	This is your Security Deposit. Your Deposit will be registered with the Deposit Protection Service for the duration of your Tenancy.	The Simple Life Team will contact you to advise when all payments are required.	Equivalent to 5 week's rent.
First Month's Rent	Your first month's rent is due in advance.	The Simple Life Team will contact you to advise when all payments are required.	1 month's rent (less any holding deposit that has been collected).

Tenants may also be charged the following fees for services provided during the tenancy:

Fee Type	Details	Date Payable	Amount
Default Fee	A payment that is required in the event of a default by the tenant: • Lost key • Lost security device giving access to the housing.	Payable on request by the Simple Life Team.	A reasonable cost that has been incurred by the Landlord.
Late Payment Fee	Fee will be added to the Tenant's account when rent falls overdue (by 14 days or more).	Payable when rent falls overdue.	Any fee charged must be no more than 3% above the Bank of England Base Rate (this is only applicable to the late payment fee not a Default Fee).
Variation of Tenancy Fee	Payments on assignment, variation or novation of a tenancy at the tenant's request.	Payable on request by the Simple Life Team following the tenant request.	Capped at £50 or the reasonable costs incurred if greater.
Early Termination Fee	Payments in respect of early termination of a tenancy agreement at the tenant's request.	Payable on request by the Simple Life Team following the tenant request.	Capped at Simple Life's loss of rent.

Any payment is inclusive of VAT. Unless stated otherwise, all payments are non-refundable.

Tenants may be expected to pay additional amounts for services incurred during your tenancy such as: Council Tax, Energy and Utilities, Television Licences, Phone and Internet services. These are not included with your rent or payments to Simple Life. It is the responsibility of the tenant to arrange for payment for these services where applicable.

Criteria for Application

All applications are based on minimum household affordability of 30 x the monthly rent payment. If the applicant has historic or current credit issues such as CCJs, IVA's, Bankruptcy then these must be disclosed to the letting agent before a holding deposit is paid so they can establish whether you are likely to be accepted for tenancy.
All applicants are referenced through Let Alliance against a criteria agreed with the Landlord and will include proof of identification, proof of residence, credit check, Right to Rent check and proof of income, passing a reference does not constitute acceptance for tenancy and the Landlord can decline an applicant without reason. All offers to tenancy are made Subject to Contract.

Accurate as of May 2020

COMMUNITIES

A house is not just a home, but also where you put down roots and establish yourself in a community of neighbours and friends. At Simple Life we feel it is just as important to have a sense of place within your street as it is to enjoy your internal space. As such, we help to organise community events throughout the year across our developments, bringing the neighbourhood together.

From Easter Egg Hunts to funding support for local schools, Simple Life aims to enhance and expand engagement projects and establish each new development as a hub for residents to **Settle for More**.

ABOUT US

Simple Life customers are offered the remarkable opportunity to rent a brand new quality home from a professional and reliable landlord. We take pride in our homes and the communities we create, so we ensure that your home is kept in excellent working order and to high standards throughout the duration of your tenancy.

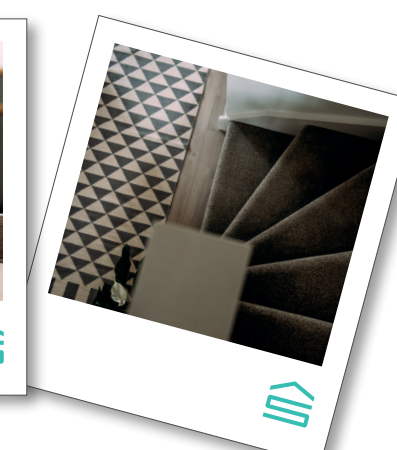
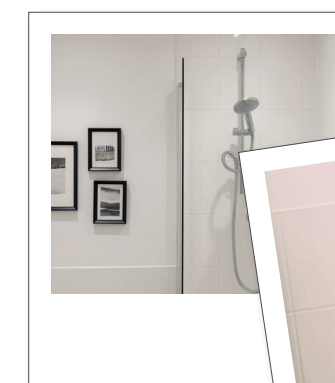
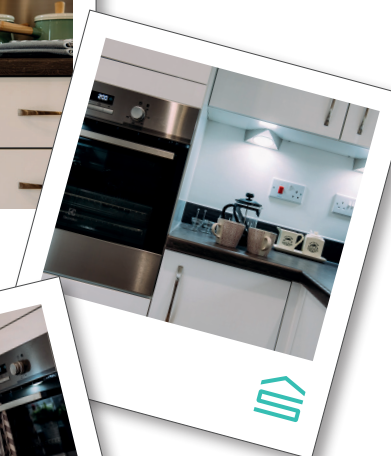
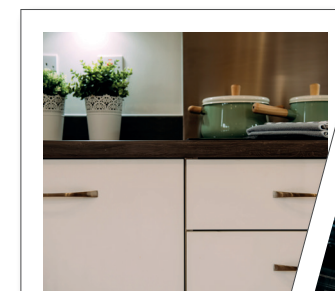
When it comes to quality affordable rental properties, we recognise that many private landlords may struggle to offer the level of service that you deserve as a customer, and we want to change that!

From cleverly integrated appliances to cosy carpets, we've thought of every little detail in your Simple Life home. And because our neighbourhoods are designed to add character and complement their surroundings perfectly, we build properties in both render and brick to create a harmonious mix – so your home will be as individual as you are.

Being part of the Simple Life family means you'll soon be living in the heart of a friendly and like-minded community, with everything you need right on your doorstep. So you'll find handy transport links nearby, and great schools, shops and amenities just minutes away.

With over 3000 properties now built across the UK, Simple Life will make you feel right at home, wherever that may be.

OUR SPEC





E: lettings@simplelifelifehomes.co.uk

T: 0345 686 0735

www.simplelifelifehomes.co.uk