



Quadrant Estate Agents

£400,000



## Plot 81, Hemins Place

Bicester, OX26 1AD

PLOT 81 The Kennett - END TERRACE three storey home with luxury FLOORING INCLUDED. The spacious KITCHEN DINER enjoys FRENCH DOORS to the garden. The lounge is the perfect space for relaxing. Upstairs you'll find THREE DOUBLE BEDROOMS across two floors. The master bedroom on the top floor comes with an EN SUITE. This home includes a CARPORT and parking. Summer/Autumn '21 move.

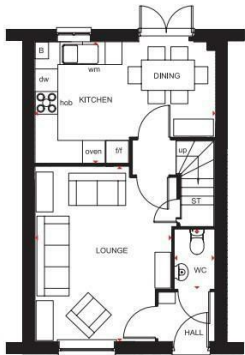
[www.quadrant-estates.co.uk](http://www.quadrant-estates.co.uk)



**THE KENNETT**  
THREE BEDROOM MID-TERRACED HOME

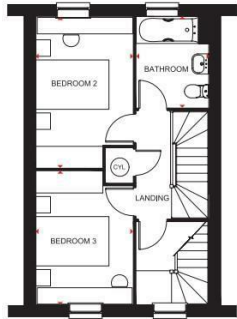
**Key**

B	Balc	f/r	Fridge/freezer space	••	Dimension location
St	Stair	w/m	Washing machine space	RL	Rooflight
Ch	Chimney	dir	Dishwasher space		



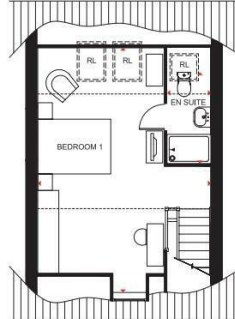
**Ground Floor**

Lounge	5001 x 3729 mm	16'4" x 12'2"
Kitchen/Dining	4733 x 3197 mm	15'6" x 10'5"
WC	1561 x 1030 mm	5'1" x 3'4"



**First Floor**

Bedroom 2	4116 x 2659 mm	13'6" x 8'8"
Bedroom 3	3658 x 2659 mm	12'0" x 8'8"
Bathroom	2498 x 1985 mm	8'2" x 6'6"



**Second Floor**

Bedroom 1	6690* x 4733 mm	21'11" x 15'6"
En suite	1189* x 2497 mm	3'11" x 8'2"

\*Overall floor dimension includes lowered ceiling areas

## ACCOMMODATION

- Luxury flooring included throughout
- End-terrace family home
- Carport and single parking space
- Open plan kitchen diner
- Cloakroom and storage
- En suite to main bedroom
- Ready to move into Summer/Autumn '21



10Market Square, Bicester, Oxfordshire, OX26 6AD  
t 01869 241166  
sales@quadrant-estates.co.uk

[www.quadrant-estates.co.uk](http://www.quadrant-estates.co.uk)

IMPORTANT: we would like to inform prospective purchasers that these sales particulars have been prepared as a general guide only. A detailed survey has not been carried out, nor the services, appliances and fittings tested. Room sizes should not be relied upon for furnishing purposes and are approximate. If floor plans are included, they are for guidance only and illustration purposes only and may not be to scale. If there are any important matters likely to affect your decision to buy, please contact us before viewing the property.