

# Gwinnett Court

Cheltenham GL51 4GQ



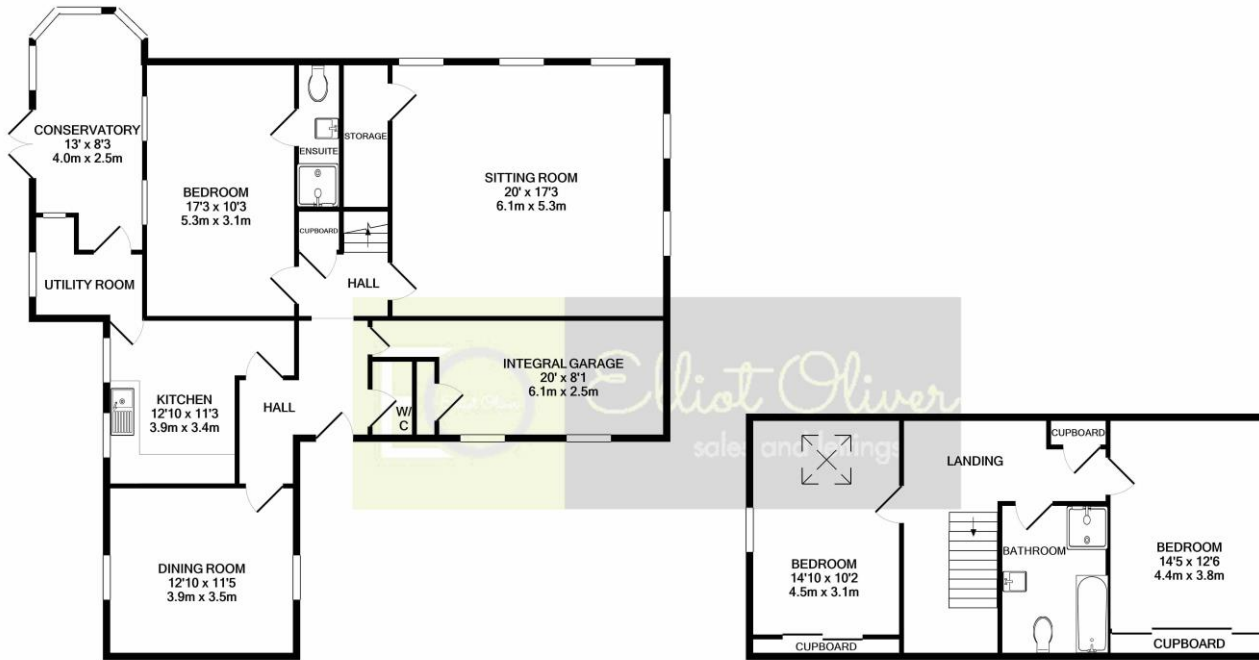
## Gwinnett Court, Shurdington GL51 4GQ

A three bedroom character filled cottage is set within a quiet in a cul-de-sac in Shurdington, which has great links to all schooling, bus routes and the M5 junction. The accommodation is flexible and offers fantastic potential for re-configuring. The ground floor offers a great sized living room with exposed wooden beams, separate kitchen with adjacent dining room, double bedroom with en-suite, utility room, integral garage and lastly a conservatory. Upstairs we have two very large double bedrooms with fitted wardrobes, a smart bathroom with shower cubicle and three piece suite. Outside there is a lovely rear garden, ample room around the plot for improvements and parking for at least 4 cars. This home also benefits from being in the catchment area for Bournside Secondary School also primary schools nearby are Shurdington, Lakeside and Leckhampton.

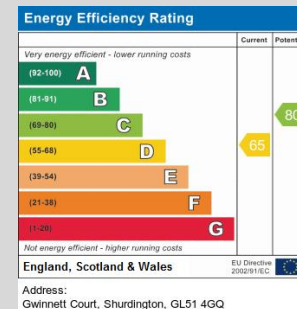








Whilst every attempt has been made to ensure the accuracy of the floor plan contained here, measurements of doors, windows, rooms and any other items are approximate and no responsibility is taken for any error, omission, or mis-statement. This plan is for illustrative purposes only and should be used as such by any prospective purchaser. The services, systems and appliances shown have not been tested and no guarantee as to their operability or efficiency can be given.  
Made with Metropix ©2021



**OFFICE**  
101 Promenade,  
Cheltenham,  
Gloucestershire, GL50  
1NW  
info@elliottoliver.co.uk

**Agents Note:** Whilst every care has been taken to prepare these sales particulars, they are for guidance purposes only. All measurements are approximate and for general guidance purposes only and whilst every care has been taken to ensure their accuracy, they should not be relied upon and potential buyers are advised to recheck the measurements