



Riverside Court, London  
Nine Elms SW8

GARTONJONES.COM



## Riverside Court, London Nine Elms, SW8

### £462 Per Week

Direct river views and spacious 721sq.ft, double bedroom apartment on the 5th floor (with lift) of this established riverside development in the heart of Nine Elms and opposite the site of the flagship US Embassy. This apartment is currently arranged with double bedroom, bathroom, an impressive triple aspect reception room with direct views of the River Thames from Battersea Power Station in the West and to the City in the East and beyond. The apartment comprises an open-plan kitchen, excellent storage throughout and a day porter. Riverside Court is located close to the amenities such as The Black Cab Coffee Co, Nine Elms Tavern and Waitrose supermarket. The development is well positioned being within a few minutes' walk of the transport links of Vauxhall including Rail, Tube (Victoria Line) and Bus Services as well as the River Taxi at St George Wharf. Includes bills such as heating and hot water with parking by separate negotiation. Furnished and available May.

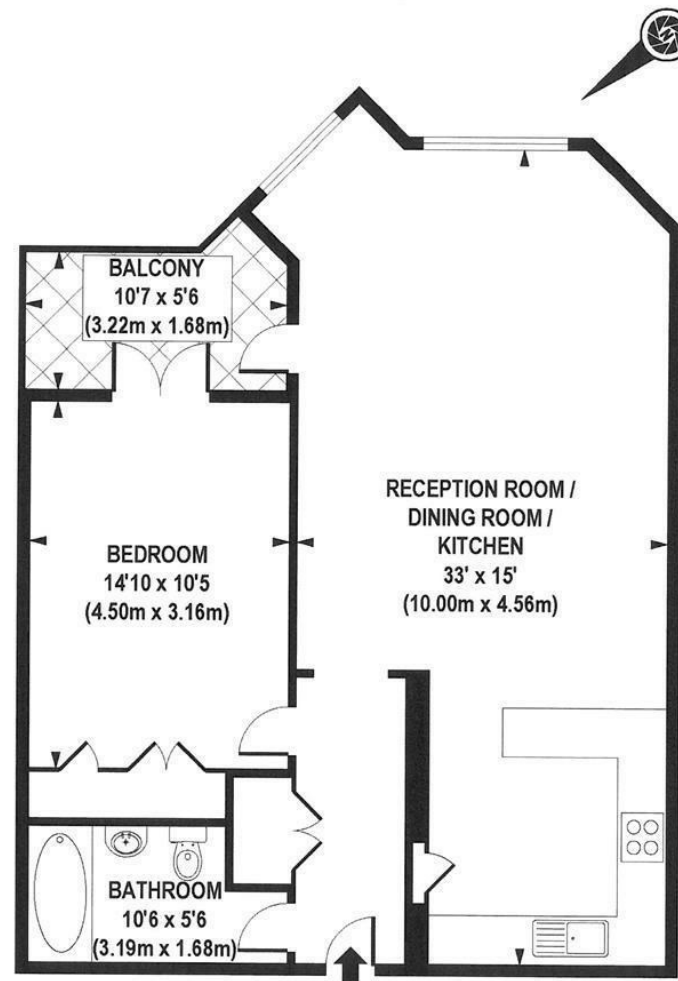
- 736.00 sq.ft
- Direct River Views and Direct Sunset Views across The River Thames
- Double Bedroom
- Separate Kitchen and Bathroom
- Parking (by separate negotiation)
- Balcony
- North West Aspect
- Service charge includes heating and hot water
- Triple Aspect Reception Room
- Vauxhall Bus/Rail/Tube and River Taxi Services Within a Few Minutes' Walk

GARTON JONES.COM

9 Albert  
Embankment  
London  
SE1 7SP

Lettings:  
+44 (0) 20 7735 1888  
nineelms@gartonjones.com  
www.gartonjones.com





APPROXIMATE GROSS INTERNAL AREA 736 sq. ft / 68.39 sq. m

