



SALES

LETTINGS

MANAGEMENT

chiswick@tatepartnership.co.uk

020 8996 0000

TATEPARTNERSHIP.CO.UK



Ennismore Avenue, W4

£525,000

Situated in ever popular Ennismore Avenue, this bright 2bedroom first floor flat, with a feature of the accommodation being high ceilings and oversized Edwardian windows, letting in so much light to all the main rooms. First floor apartments are preferred by many and this one runs to 594sq/ft, with separate hall, living room, kitchen, bathroom and two bedrooms. It also comes with the reassuring "share of freehold" that most buyers of today, appreciate so much. The location is great too, just off Chiswick High Road, only minutes from Chiswick town centre, with its vibrant, family-friendly shopping and dining amenities. 5 minutes walk to Turnham Green or Stamford Brook stations.

Ennismore Avenue, W4

Floor Plan

Approximate gross internal area
55 sq m / 594 sq ft

Ennismore Avenue, W4

Approximate Gross Internal Area = 55.2 sq m / 594 sq ft

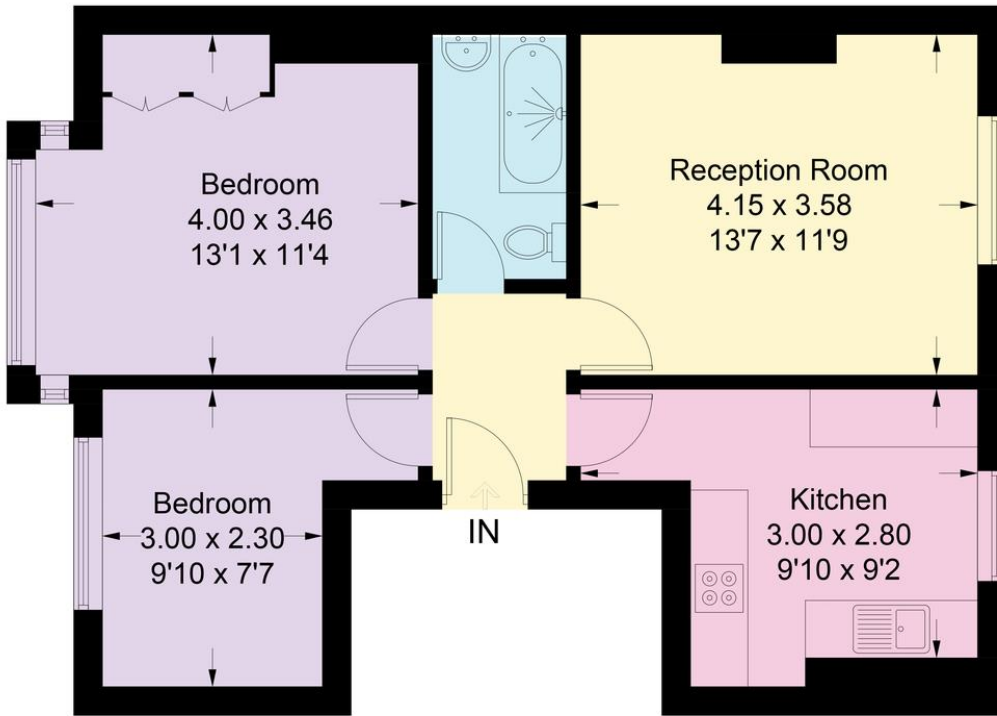


Illustration for identification purposes only, measurements are approximate, not to scale. floorplansUsketch.com © (ID705148)

EPC

