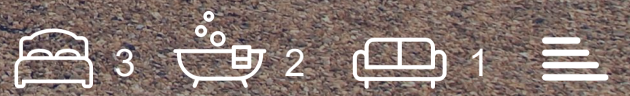
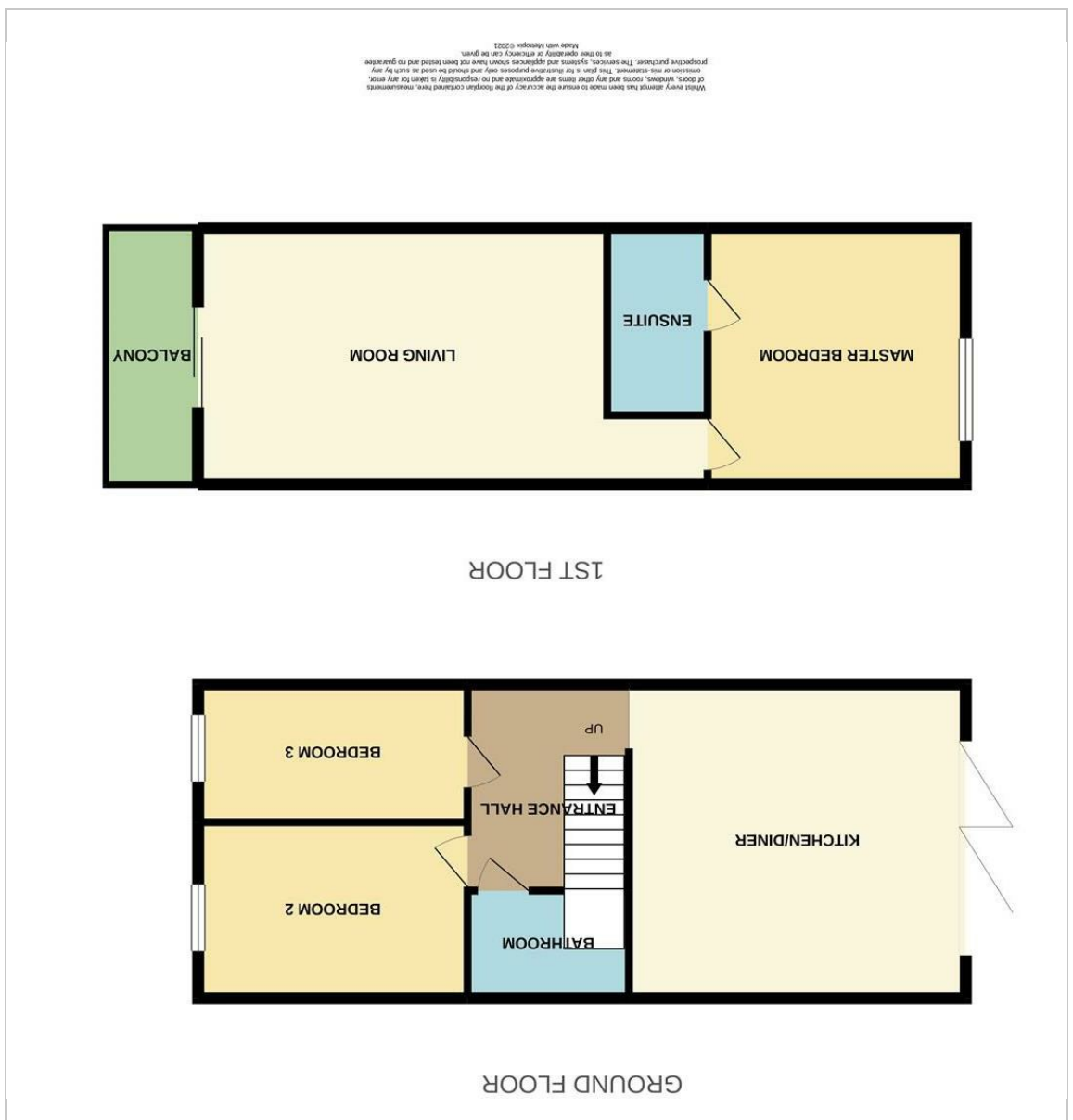


PLOT 1 Jetty Road
 Warden, Sheerness, ME12 4PR
 Asking price £325,000



JAMES PERRY ESTATE AGENTS

Floor Plan



Area Map



Energy Efficiency Graph

Energy Efficiency Rating	
Current	Potential
A	A
B	B
C	C
D	D
E	E
F	F
G	G

Environmental Impact (CO ₂) Rating	
Current	Potential
A	A
B	B
C	C
D	D
E	E
F	F
G	G

Viewing

Please contact our Isle of Sheppey Office on 01795 666 666 if you wish to arrange a viewing appointment for this property or require further information.

These particulars, whilst believed to be accurate are set out as a general outline only for guidance and do not constitute any part of an offer or contract. Intending purchasers should not rely on them as statements of representation of fact, but must satisfy themselves by inspection or otherwise as to their accuracy. No person in this firm's employment has the authority to make or give any representation or warranty in respect of the property.

PLOT 1 Jetty Road



Description

BRAND NEW FAMILY HOME WITH A WEALTH QUALITY FEATURES IN A STUNNING LOCATION OVERLOOKING THE COAST. With a beach literally across the road, panoramic views as far as the eye can see, there is no question this is one of the best spots in Warden Bay. Imagine just a stones throw away from front door you could be walking along the beach, or just enjoying the sea views from your modern glass screened balcony! Internally there are Bi-fold patio doors to decked area and south facing rear garden, balcony, luxury fully fitted kitchen, master bedroom en-suite, 3 bedrooms and much more. THIS PROPERTY IS A MUST IF YOU ENJOY THE COAST, BEACH WALKS, COASTAL PATHS AND SUPERB VIEWS. NO CHAIN AVAILABLE IMMEDIATELY

- AMAZING SEAVIEWS
- BI- FOLD DOORS TO REAR GARDEN
- MUST BE SEEN !
- BRAND NEW BATHROOM
- GLASS RAIL BALCONY SEAVIEWS
- BRAND NEW MODERN KITCHEN
- MASTER BEDROOM ENSUITE
- BRAND NEW FAMILY HOME
- GAS CENTRAL HEATED & D/G
- RARE SEAFRONT LOCATION

Warden, Sheerness, ME12 4PR

