



Fountain Park Way, White City, W12

£600 Per Week

A brand-new luxurious two bedroom flat situated on the sixth floor with concierge in the heart of White City & Shepherds Bush.

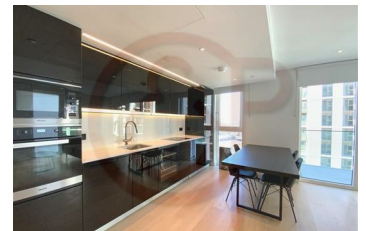
The property comprises a spacious reception room with a dining space, a brand new open plan kitchen with wine cooler, two double bedrooms, two luxury bathrooms (one of them is en-suite) and a private balcony.

The property further benefits from lots of natural lights, ample storage space, brand new furniture, a 24 hours concierge, residential gym & swimming pool, cinema room and stylish communal lounge.

The development is ideally located within walking distance to White City (Central line), Wood Lane (Circle and Hammersmith & City lines) and Shepherds Bush (Central & Overground lines) tube station and also National Rail service.

The property is enviably located just stones throw away from Westfield shopping centre and within easy reach of transport links into and out of central London, including Shepherds Bush, Shepherds Bush Market and Holland Park.

- Brand new development
- Two double bedrooms
- Residential gym & swimming pool
- Close to Westfields shopping centre
- Spacious reception with dining space
- Two stylish bathrooms
- Communal luxurious lounge
- Brand new open plan kitchen space
- Private balcony
- 24 hours concierge



Energy Efficiency Rating		Environmental Impact (CO ₂) Rating	
Current	Target	Current	Target
A	A	A	A
B	B	B	B
C	C	C	C
D	D	D	D
E	E	E	E
F	F	F	F
G	G	G	G

England & Wales 2008/1/EC