

Western Gateway, London, E16 1BN



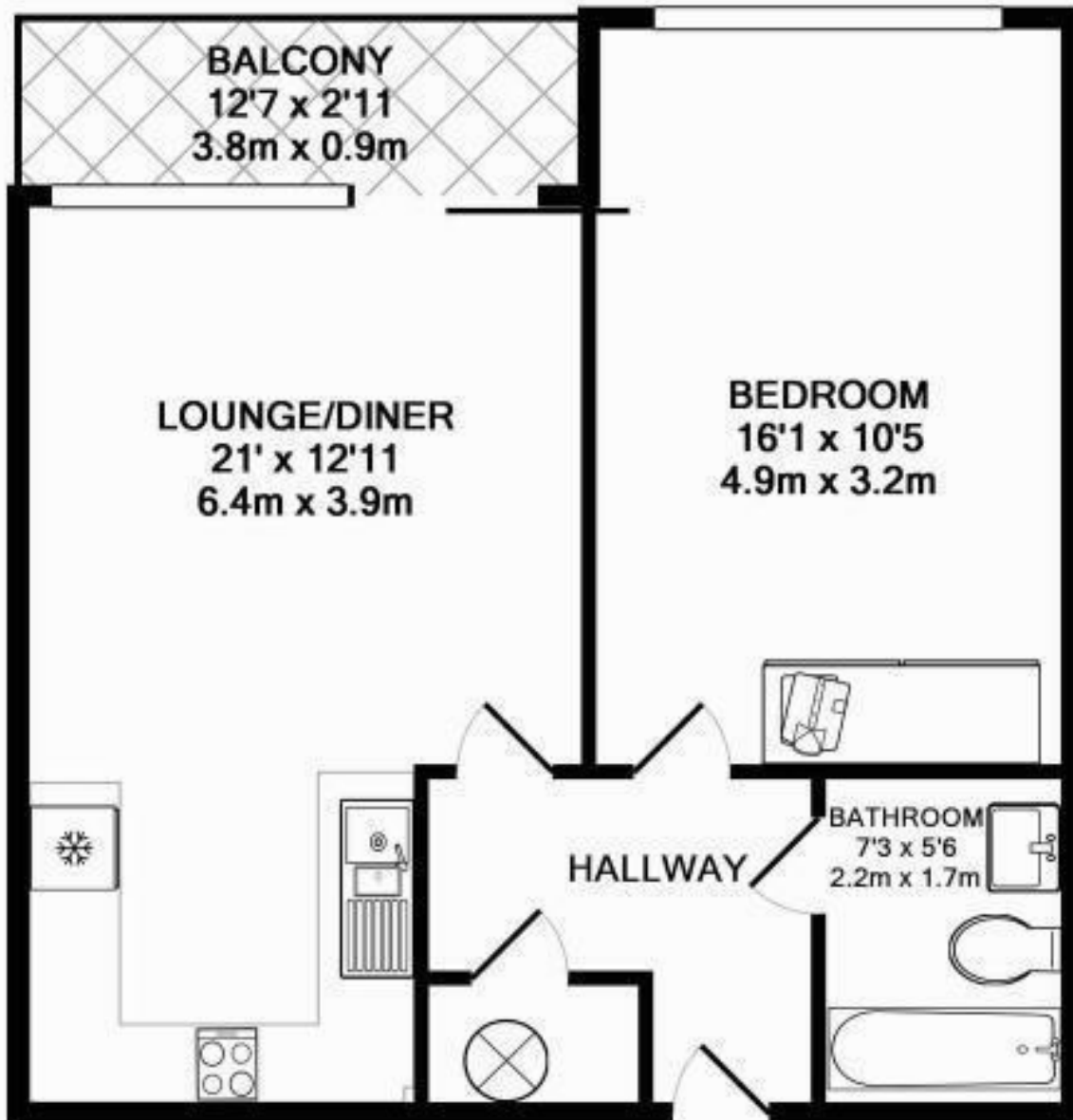
£1,200 Per Month

Stunning 1 bedroom 1 bathroom apartment only a short walking distance from Royal Victoria (DLR) situated in the iconic Westgate Apartments development.

Located on the 11th floor, this apartment is well sized and also includes a well laid out open-plan reception and dining room combined with a deluxe designer kitchen, as well as a double bedroom you can escape into after the toils of your day. Dark wooden floors will greet you, no carpets in this apartment so no need to worry about getting the carpets dirty. The room is coupled with a balcony that will lead you out onto stunning views over the Royal Docks, O2 arena and Canary Wharf skyline. The living room will also benefit from having the balcony at the end of the room as well as including plush furniture like the reclining black leather chairs.

A sense of safety and security is assured with the knowledge that you have an on-site concierge service with CCTV monitoring, as well as your own video entry-phone system. Further to that, tenants benefit from an on-site gymnasium.





TOTAL APPROX. FLOOR AREA 503 SQ.FT. (46.7 SQ.M.)

Whilst every attempt has been made to ensure the accuracy of the floor plan contained here, measurements of doors, windows, rooms and any other items are approximate and no responsibility is taken for any error, omission, or mis-statement. This plan is for illustrative purposes only and should be used as such by any prospective purchaser. The services, systems and appliances shown have not been tested and no guarantee as to their operability or efficiency can be given

Made with Metropix ©2017

Energy Efficiency Rating		Current	Potential
Very energy efficient - lower running costs			
(92 plus) A			
(81-91) B			
(69-80) C			
(55-68) D			
(39-54) E			
(21-38) F			
(1-20) G			
Not energy efficient - higher running costs			
England & Wales	EU Directive 2002/91/EC		

Environmental Impact (CO ₂) Rating		Current	Potential
Very environmentally friendly - lower CO ₂ emissions			
(92 plus) A			
(81-91) B			
(69-80) C			
(55-68) D			
(39-54) E			
(21-38) F			
(1-20) G			
Not environmentally friendly - higher CO ₂ emissions			
England & Wales	EU Directive 2002/91/EC		



Associated Offices in London, Essex and Hertfordshire
 Kings Head Office Tudor Lodge, Burton Lane, Goffs Oak, Hertfordshire EN7 6SY Tel: 01707-872000

