



Watchfield Court, London, W4 4NE

£775,000

**WHITMAN & CO.**

SALES · LETTINGS · COMMERCIAL

- Exceptionally light
- 2 bedrooms
- 12' bespoke kitchen

- 19' reception room
- 2 bathrooms
- On site estate manager

Tenure - Leasehold with share of freehold (173 years remaining)  
 Service Charge - £4500 pa  
 Ground Rent - Peppercorn  
 Local Authority - Hounslow  
 Council Tax - Band E

## THE PROPERTY

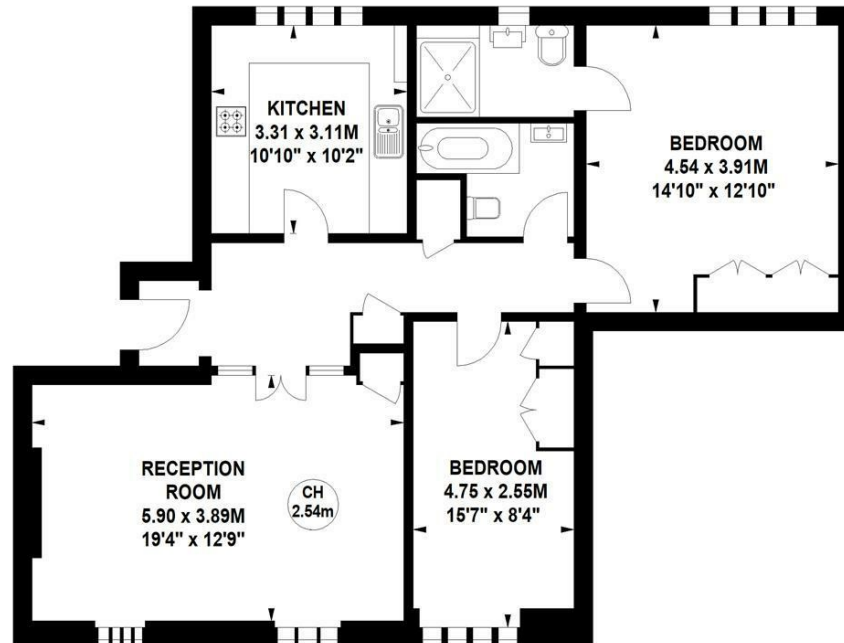
An exceptionally light and spacious two bedroom, two bathroom, top floor flat set within this sought after Art Deco building offering close proximity to all amenities. Accommodation comprises; master bedroom with luxury ensuite, second bedroom, luxury bathroom, 19' reception room, 12' bespoke kitchen / breakfast room, immaculate order throughout, communal gardens, off street parking, automatic lifts, on site estate manager. Ideally situated just south of Chiswick High Road offering close proximity to tube and bus networks as well as to extensive shopping facilities.

## Watchfield Court, W4

Approximate gross internal area

86.21 sq m / 928 sq ft

Key :  
 CH - Ceiling Height



### Fourth Floor

Not to scale, for guidance only and must not be relied upon as a statement of fact.  
 All measurements and areas are approximate only

## SITUATION



5-7 Turnham Green Terrace, Chiswick, London, W4 1RG

Tel 020 8747 8300

E-mail [sales@whitmanandco.com](mailto:sales@whitmanandco.com)

Website [www.whitmanandco.com](http://www.whitmanandco.com)