



Evesham Road

REDDITCH

£225,000



Three Bedroom Mid Terrace Cottage

Features.

- VICTORIAN PERIOD COTTAGE
- THREE BEDROOMS
- EN-SUITE TO MASTER BEDROOM
- LOUNGE
- KITCHEN/DINER
- GUEST WC
- REAR GARDEN WITH LAWN AND PATIO

Description.

Summary: A beautifully presented and deceptively spacious three bedroom period cottage situated in a popular location of Headless Cross, Redditch.

Description: A circa 1900's period cottage with exposed beams and versatile living space. The accommodation briefly comprises:- A lounge with front aspect baywindow, feature fireplace and access to the kitchen/diner. The kitchen has modern yet traditional fitted units, space for free standing appliances, a breakfast bar and space for a table and chairs for more comfortable dining. Completing the ground floor the property offers a study and guest WC. A rising staircase leads to the first floor and offers the master bedroom and en-suite with shower enclosure, sink and WC. A further two good sized bedrooms and the main family bathroom with bath and shower over, sink and WC.

Outside: The front aspect of the property is approached by a brick built boundary with steps down to an enclosed porch. The rear garden has a paved and gravel patio area with a pathway leading to a neatly maintained lawn and raised flower beds.

Location: Situated in Headless Cross, which remains a very popular suburb of Redditch and is within close proximity to the well-regarded local schooling. The town of Redditch offers easy access to motorway links (M42, Jct 2&3) and good rail and bus links. There are also excellent leisure facilities along with cultural attractions, and the Kingfisher Shopping Centre.



Room Dimensions

Lounge: 13' 1" x 12' 10" (3.99m x 3.93m) max

Kitchen: 14' 6" x 20' 7" (4.42m x 6.29m) max

Study: 5' 8" x 6' 9" (1.74m x 2.07m)

WC 3' 9" x 4' 10" (1.16m x 1.48m)

Stairs To First Floor Landing

Master Bedroom: 14' 8" x 16' 9" (4.48m x 5.12m) max

En Suite: 6' 4" x 6' 0" (1.94m x 1.83m) max

Bedroom Two: 6' 7" x 10' 10" (2.02m x 3.31m)

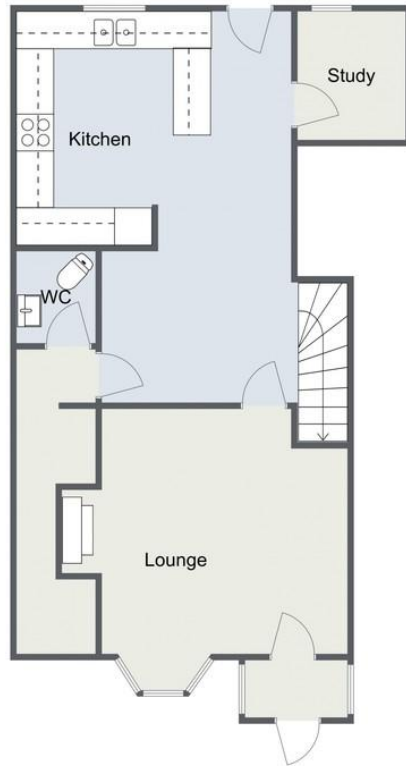
Bedroom Three: 6' 7" x 10' 10" (2.01m x 3.32m)

Bathroom: 7' 8" x 8' 1" (2.35m x 2.47m) max

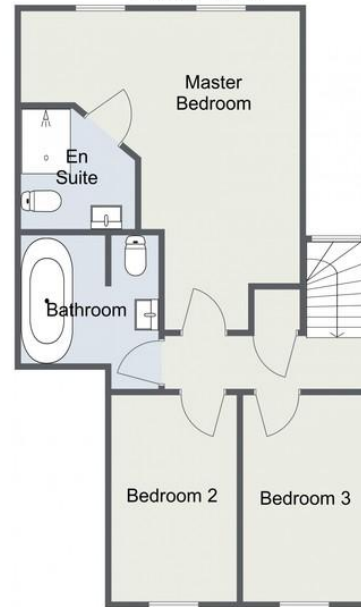


Evesham Road, Headless Cross

Ground Floor



First Floor



Total Area Approx
100.4 sq m
1080.7 sq ft

For illustrative purposes only. Decorative finishes, fixtures & fittings do not represent the current state of the property. Measurements are approximate & not to scale. Floor Plans made using RoomSketcher.

EPC: TBC

COUNCIL TAX BAND: A

TENURE: Freehold

For more information on this house or to arrange a viewing please call the Redditch office on:

01527 540 654

Alternatively, you can scan below to view all of the details of this property online.



Please read the following: These particulars are for general guidance only and are based on information supplied and approved by the seller. Complete accuracy cannot be guaranteed and may be subject to errors and/or omissions. They do not constitute a contract or part of a contract in any way. We are not surveyors or conveyancing experts therefore we cannot and do not comment on the condition, issues relating to title or other legal issues that may affect this property. Interested parties should employ their own professionals to make enquiries before carrying out any transactional decisions. Photographs are provided for illustrative purposes only and the items shown in these are not necessarily included in the sale, unless specifically stated. The mention of any fixtures, fittings and/or appliances does not imply that they are in full efficient working order and they have not been tested. All dimensions are approximate. We are not liable for any loss arising from the use of these details.

373 Evesham Road
Redditch
Worcestershire
B97 5JA