



Neo Bankside, Bankside
Southwark SE1

GARTONJONES.COM



Neo Bankside, Bankside Southwark, SE1

£346 Per Week

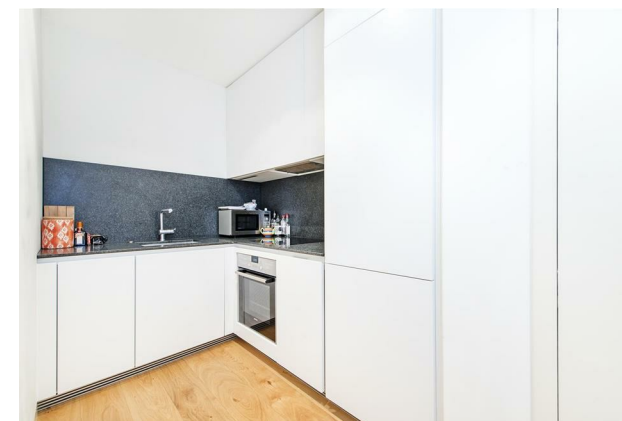
A luxury studio apartment is available in this popular development located behind the Tate Gallery and moments from the banks of the River Thames in Bankside. The property has been finished to a high specification with an open plan reception room, an integrated kitchen with Siemens appliances, a Juliette style balcony and luxury bathroom suite with separate shower. Additionally there are wooden floors with under floor heating, comfort cooling and excellent storage. Neo Bankside has a 24 hour concierge and a range of facilities including a business centre, bike club and a residents gymnasium as well as on-site amenities including a Co-Op convenience store. If you want to be in the heart of the South Bank and feel the true buzz of one of London's trendiest locations, this is the place to be. Not only do you have some of the city's most famous tourist attractions all within walking distance but you also have access to an array of top restaurants and very cool boutiques all on your door step. The transport links of Waterloo & Southwark are both within walking distance.

- 426.00 sq.ft
- Studio Suite
- Bathroom
- Open Plan Reception Room
- Integrated Kitchen with Siemens Appliances
- Large Utility & Storage Cupboard
- 24 Hour Concierge
- North East Aspect
- Many Amenities on the Doorstep
- Walking Distance to Transport Links of Waterloo & Southwark

GARTON JONES.COM

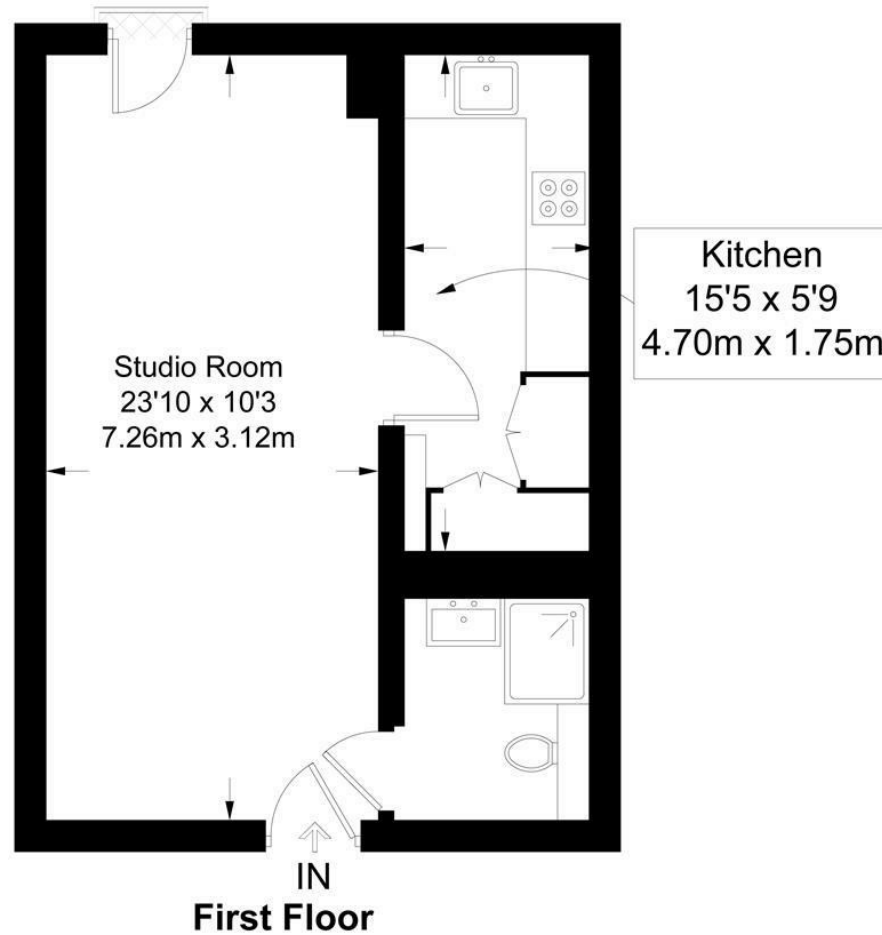
9 Albert
Embankment
London
SE1 7SP

Lettings:
+44 (0) 20 7735 1888
nineelms@gartonjones.com
www.gartonjones.com



Neo Bankside

Approximate Gross Internal Area = 405 sq ft / 37.6 sq m



Not to scale, for guidance only and must not be relied upon as a statement of fact.
All measurements and areas are approximate only and have been prepared in
accordance with the current edition of the RICS Code of Measuring Practice.

