

The logo for GLB Property Services Ltd, featuring the letters 'GLB' in a white, sans-serif font inside a blue square.

PROPERTY SERVICES LTD



15 Whitley Village , Coventry, CV3 4AJ

£630 Per Calendar Month

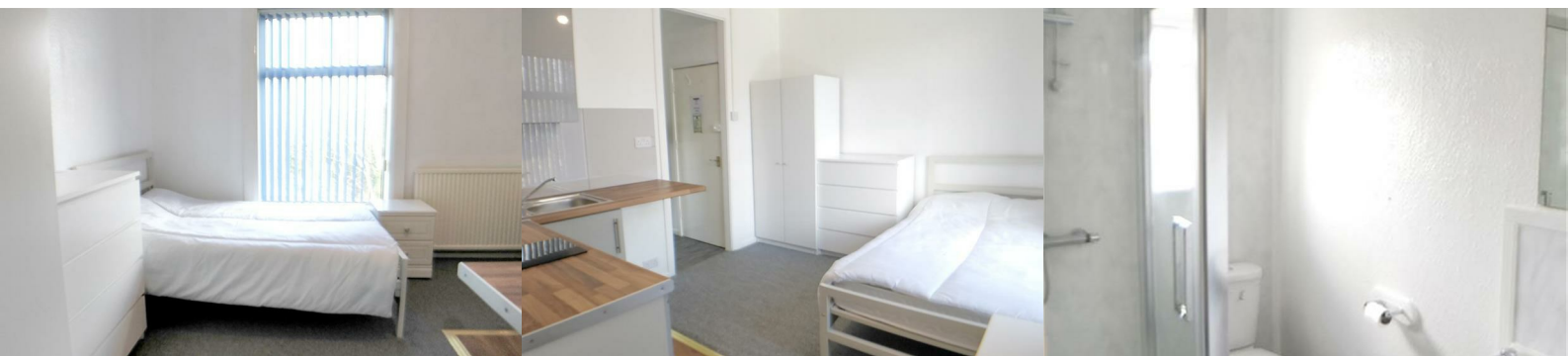


Refurbished Studio Apartment Available Immediately In The Whitley Area, Excellent Location For Access To A444 & A46 , JLR Whitley & Student Centre Building Coventry University - Bills Included!

The studio comprises of the following:

- Communal entrance
- Kitchenette with integrated oven/hob & fridge freezer
- Double bedroom with study desk and chair
- En-suite shower room
- Furnished to a good standard
- Communal area with a washing machine and tumble dryer
- Driveway
- Large communal garden

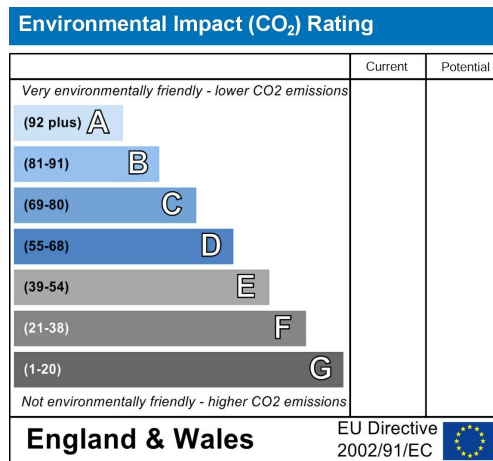
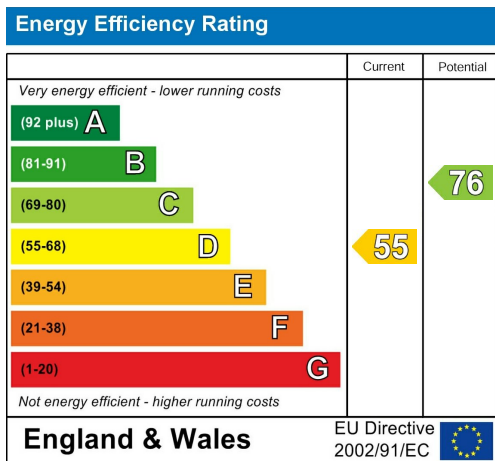
£630.00 per calendar month. Including Bills



Area Map



Energy Efficiency Graph



These particulars, whilst believed to be accurate are set out as a general outline only for guidance and do not constitute any part of an offer or contract. Intending purchasers should not rely on them as statements of representation of fact, but must satisfy themselves by inspection or otherwise as to their accuracy. No person in this firm's employment has the authority to make or give any representation or warranty in respect of the property.

GLB Property Services Ltd
Bayley House, 22-23 Bayley Lane
Coventry, CV1 5RJ

T. 02476 433416

info@glbpropertyservices.com
www.glbpropertyservices.com

