

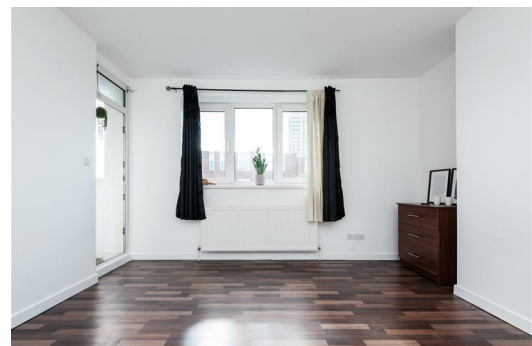


Thornaby House, LONDON, , E2 0BE
£2,250 PCM

Elms Estates are delighted to bring to the market To Let this lovely Four Double Bedroom 2nd Floor Apartment, located just off of Bethnal Green Road and within the Heart of the East End with easy access to all of the Restaurants, Bars, Shops, Markets, Gyms, Parks, Galleries and Museums this Exciting Area has to offer.

The property benefits hugely from having both Bethnal Green Tube Station (Central Line) and Bethnal Green Overground Station both within a short walk along with multiple bus routes in to the City, West End and Beyond.
Internally the property is presented in Good Condition with a Modern Fitted Kitchen and Bathroom. The property enjoys wood laminated flooring throughout and feels bright and spacious with the added benefit of a small west facing balcony.

The property is available to move in to from 19 April 2021 on a furnished basis. Early viewing is highly recommended in order to avoid disappointment.



Reception Room
13'3" x 13'1" (4.06 x 4.01)

Kitchen
10'9" x 8'6" (3.28 x 2.60)

Bedroom 1
14'7" x 8'10" (4.46 x 2.71)

Bedroom 2
11'5" x 9'6" (3.50 x 2.92)

Bedroom 3
11'5" x 9'2" (3.50 x 2.81)

Bedroom 4
11'5" x 6'0" (3.50 x 1.83)

Bathroom

W.C.

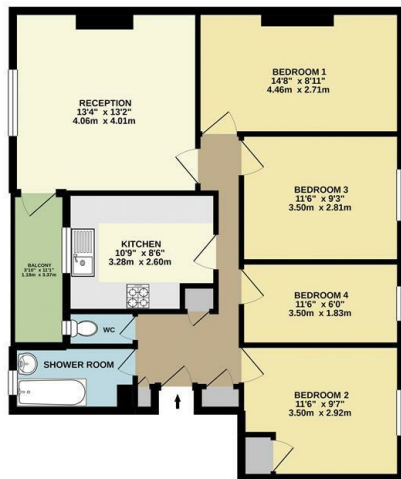
Balcony
10'8" x 3'10" (3.27 x 1.18)

Council Tax Band C



Thornaby House, E2

Approximate Gross Internal Area 803 sq. ft - 76.6 sq. m.



2nd Floor Flat
Total Floor Area 803 sq. ft. - 76.6 sq. m. Approx.

For Illustration Purposes Only - Not To Scale.
lpaplus.com

Energy Efficiency Rating		Environmental Impact (CO ₂) Rating	
Current	Potential	Current	Potential
Very energy efficient - lower running costs	Very energy efficient - lower running costs	Very environmentally friendly - lower CO ₂ emissions	Very environmentally friendly - lower CO ₂ emissions
(92 plus+) A	(92 plus+) A	(92 plus+) A	(92 plus+) A
(81-91) B	(81-91) B	(81-91) B	(81-91) B
(69-80) C	(69-80) C	(69-80) C	(69-80) C
(55-68) D	(55-68) D	(55-68) D	(55-68) D
(39-54) E	(39-54) E	(39-54) E	(39-54) E
(21-38) F	(21-38) F	(21-38) F	(21-38) F
(1-20) G	(1-20) G	(1-20) G	(1-20) G
Not energy efficient - higher running costs	Not energy efficient - higher running costs	Not environmentally friendly - higher CO ₂ emissions	Not environmentally friendly - higher CO ₂ emissions
EU Directive 2002/91/EC	EU Directive 2002/91/EC	EU Directive 2002/91/EC	EU Directive 2002/91/EC
England & Wales	England & Wales	England & Wales	England & Wales