

Flat 3, 3 Athol Road, Whalley Range, M16 8QW



JP&Brimelow
SALES

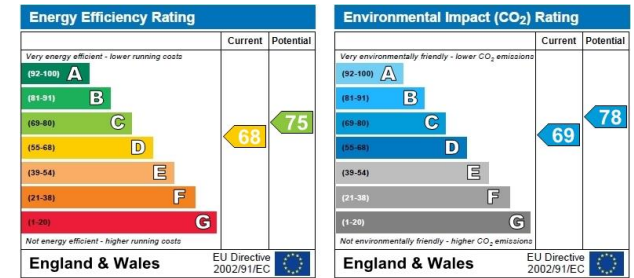
Price: £130,000

****VIDEO TOUR AVAILABLE**** A fully refurbished & bright, ONE DOUBLE BEDROOMED, first floor apartment set within this attractive period conversion on a tree lined residential road off Wilbraham Road in Whalley Range. A fantastic position for travelling into Manchester City Centre, motorway links directly to Manchester International Airport and all the amenities of Chorlton nearby with all its local amenities and independent bars, cafes and restaurants. This well presented apartment offers well planned accommodation throughout: In brief; communal entrance hallway, stairs lead up to all floors. The apartment has a private entrance hall with doors leading to a lounge/dining room with a bay window to the front aspect, a modern fitted kitchen, a double bedroom and a fitted brand new 'Duravit' shower room suite. The apartment benefits from; off road parking to the rear aspect, double glazed windows throughout and is warmed by gas fired central heating. Offered with NO VENDOR CHAIN. Will suit either a first time buyer or a professional couple and early viewing is highly recommended to appreciate this lovely apartment.



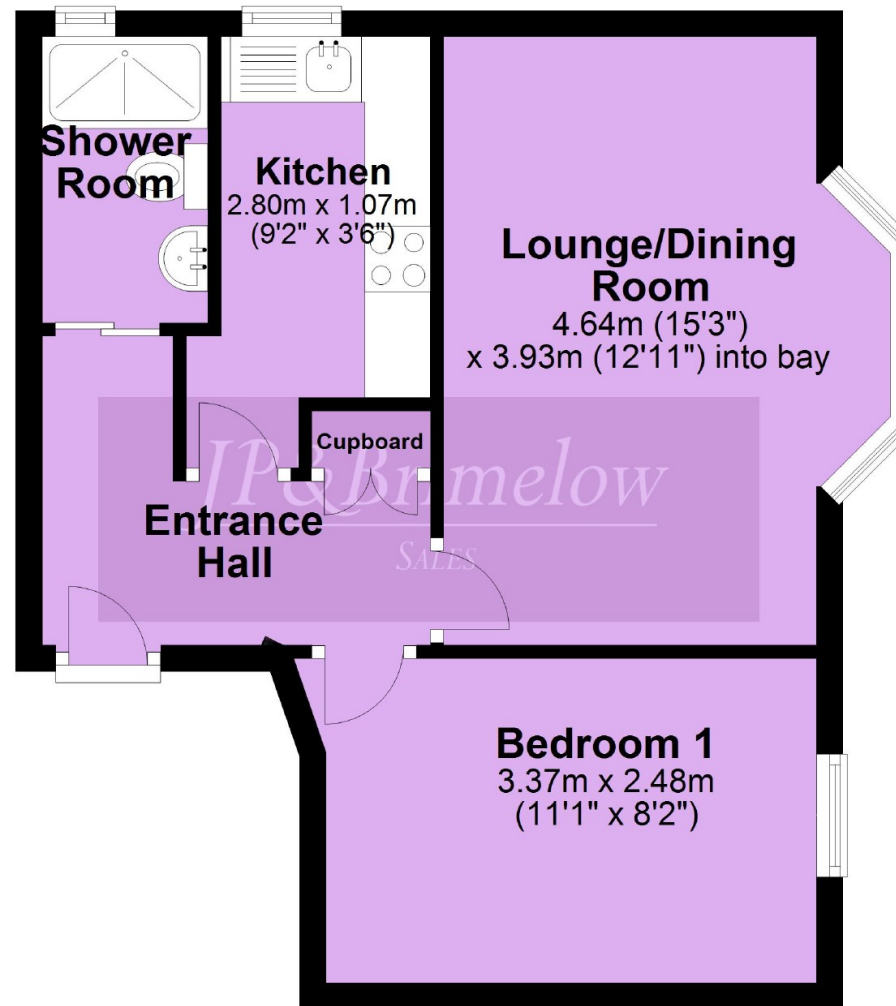


EPC Chart



Leasehold Council Tax Band: A

First Floor



Chorlton & Didsbury Sales
430 Barlow Moor Road, Chorlton, Manchester, M21 8AD
Chorlton: 0161 882 2233 Didsbury: 0161 448 0622
E: chorlton@jpbrimelow.co.uk www.jpandbrimelow.co.uk



JP&Brimelow
SALES

NOTICE: JP & Brimelow Chorlton & Didsbury Ltd for themselves and for the vendors or lessors of this property whose agents they are give notice that:

- (i) the particulars are set out as a general outline only for the guidance of intending purchasers or lessees, and do not constitute, nor constitute part of, an offer or contract;
- (ii) all descriptions, dimensions, references to the condition and necessary permissions for use and occupation, and other details are given in good faith and are believed to be correct but any intending purchasers or tenants should not rely on them as statements or representations of fact but must satisfy themselves by inspection or otherwise as to the correctness of each of them;
- (iii) no person in the employment of JP & Brimelow Ltd has any authority to make or give any representation or warranty whatever in relation to this property.



Follow us on Twitter @jpandbrimelows