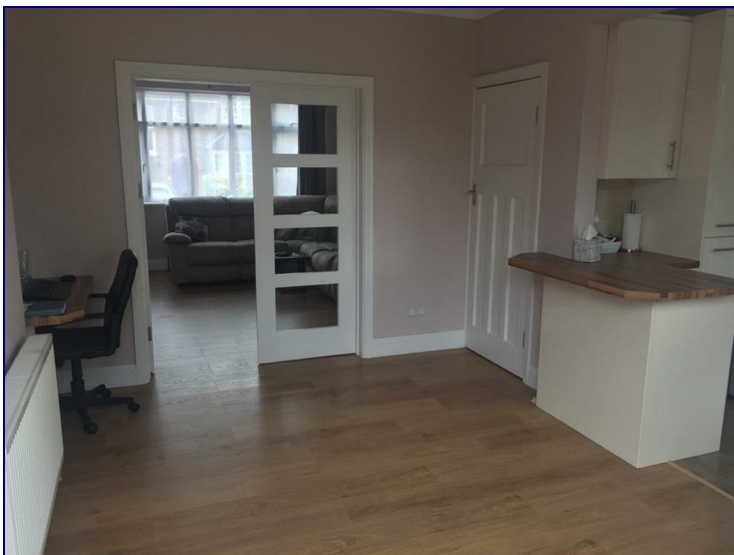


First Avenue, Enfield, EN1 1BP



£1,700

** Zero Deposit Option Available **

Three Bedroom Terrace House.

This property benefits from a modern open plan kitchen / dining room, separate lounge, downstairs W/C, family size easily maintainable garden, two double bedrooms, one single and a three piece bathroom suite. Offering on street non restricted parking.

Located within walking distance of Bush Hill Park Overground Station which offers fast links into London Liverpool Street with connections to the Victoria Line at Seven Sisters. Local shops and amenities in Enfield Town are only a



Energy Efficiency Rating		
	Current	Potential
<i>Very energy efficient - lower running costs</i>		
(92 plus) A		
(81-91) B		
(69-80) C		
(55-68) D		
(39-54) E		
(21-38) F		
(1-20) G		
<i>Not energy efficient - higher running costs</i>		
England & Wales	EU Directive 2002/91/EC	

Environmental Impact (CO ₂) Rating		
	Current	Potential
<i>Very environmentally friendly - lower CO2 emissions</i>		
(92 plus) A		
(81-91) B		
(69-80) C		
(55-68) D		
(39-54) E		
(21-38) F		
(1-20) G		
<i>Not environmentally friendly - higher CO2 emissions</i>		
England & Wales	EU Directive 2002/91/EC	

