



Belvedere Row Apartments, Shepherds Bush
London W12

GARTON JONES.COM

Belvedere Row Apartments, Shepherds Bush London, W12

GARTON JONES.COM

49 Marsham Street Lettings:
London SW1P 3DP +44 (0) 20 7340 0480
westminster@gartonjones.com
www.gartonjones.com

£550 Per Week

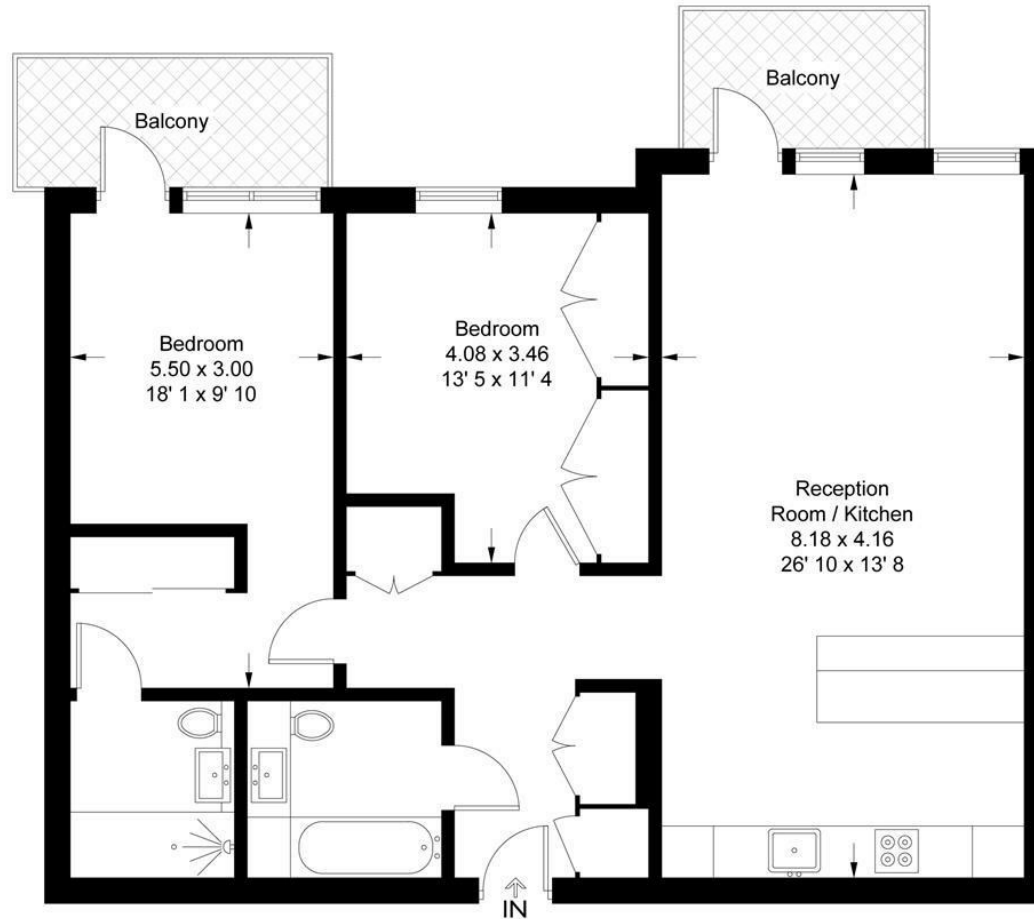
A bright and spacious 2 double bedroom apartment located on the 10th floor (with lift) brand new development in the heart of White City. This furnished apartment comprises of a large reception room with an open plan kitchen with integrated Miele appliances, there are built in wardrobes bedroom to both bedrooms, 2 modern bathrooms (1 en-suite), 2 large balconies and comfort cooling. Residents of the development will benefit from a 24-concierge service, a health spa with swimming pool, fitness centre, cinema room, private dining rooms and business suite. White City Living is exceptionally well positioned and is located next door to Westfield shopping centre. White City, Wood Lane and Shepherds Bush underground and mainline train services are close by. The apartment comes with one secure parking space.

- 940 sq.ft (87.3sq.m)
- 10th Floor (With Lift)
- 2 Double Bedrooms
- Open Plan Reception Room
- Kitchen with Integrated Miele Appliances
- 2 Modern Bathrooms (1 En-suite)
- 2 Private Balconies & Secure Parking Available
- 24 Hour Concierge, Gym, swimming pool, and Cinema Room
- Next door to Westfield Shopping Centre
- Walking distance to White City, Shepherds Bush, and Wood Lane Tube Stations



Belvedere Apartments

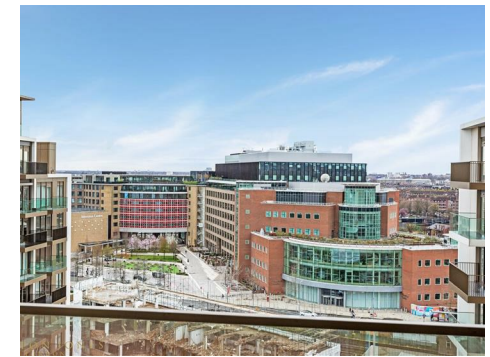
Approximate Gross Internal Area = 940 sq ft / 87.3 sq m



Not to scale, for guidance only and must not be relied upon as a statement of fact
All measurements and areas are approximate only and have been prepared in
accordance with the current edition of the RICS Code of Measuring Practice



GARTON JONES
DON



GARTON JONES
DON