

Mandarin Way

Cheltenham GL50 4RT

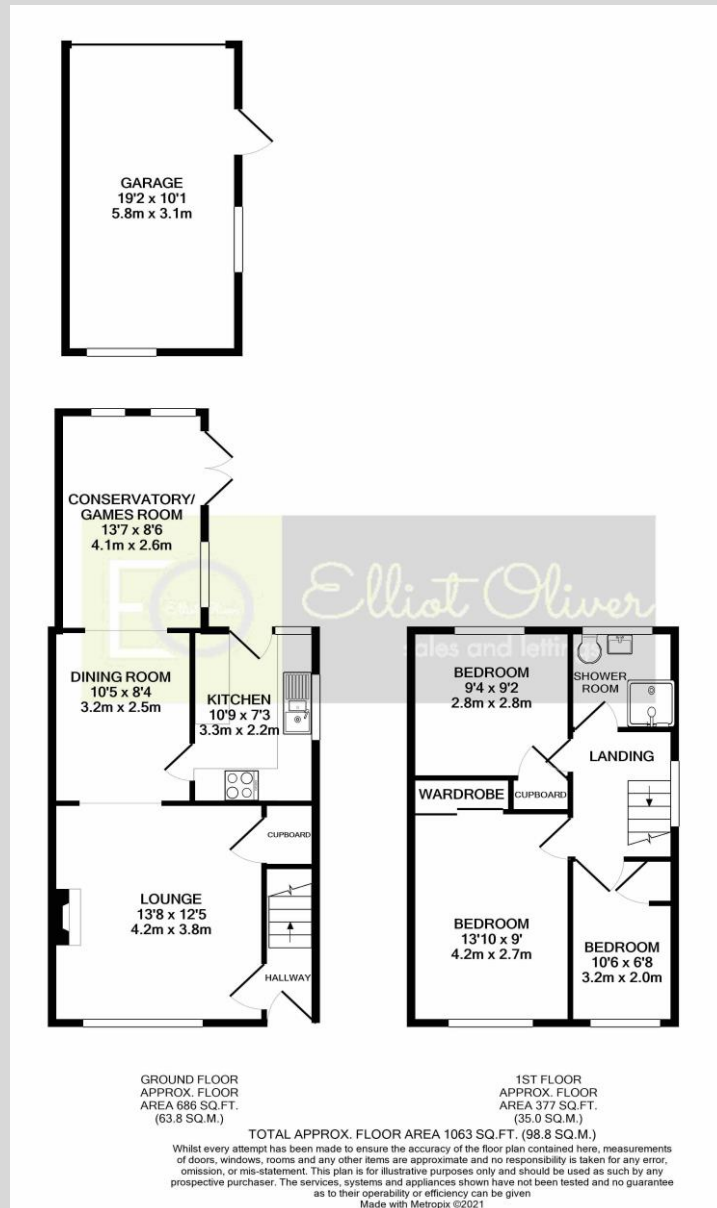


Mandarin Way, Cheltenham GL50 4RT

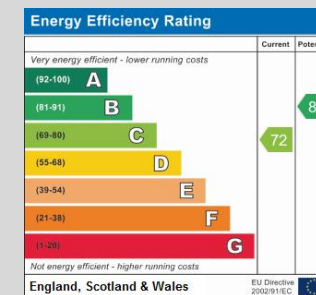
This is a very well presented three bedroom semi-detached house set in the popular Wymans Brook location on the outskirts of the Cheltenham Town Centre. This house would suit a young family or first time buyer alike. The accommodation downstairs offers an entrance hall, lounge, dining room which kitchen adjacent and lastly an extended games room/study. The re-fitted kitchen has a great amount of cupboard and worktop space. Upstairs are two double bedrooms, the main bedroom offering built in wardrobes. There is a also a shower room and lastly a single bedroom. Outside benefits from a garage with parking in front, well appointed front and rear gardens. This is a great house with plenty of great space worth a viewing.







Whilst every attempt has been made to ensure the accuracy of the floor plan contained here, measurements of doors, windows, rooms and any other items are approximate and no responsibility is taken for any error, omission, or mis-statement. This plan is for illustrative purposes only and should be used as such by any prospective purchaser. The services, systems and appliances shown have not been tested and no guarantee as to their operability or efficiency can be given.
 Made with Metropix ©2021



OFFICE
 101 Promenade,
 Cheltenham,
 Gloucestershire, GL50
 1NW
 info@elliottoliver.co.uk

Agents Note: Whilst every care has been taken to prepare these sales particulars, they are for guidance purposes only. All measurements are approximate and for general guidance purposes only and whilst every care has been taken to ensure their accuracy, they should not be relied upon and potential buyers are advised to recheck the measurements