



jordanfishwick

SALFORD
City Point 1



City Point 1, Salford M3 6AF

Guide price £210,000



The Property

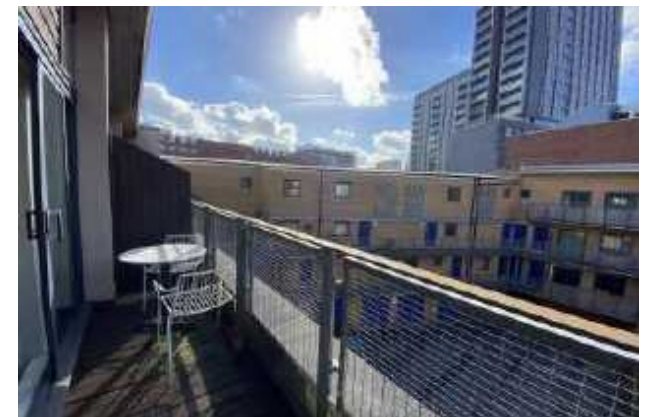
CASH BUYERS ONLY!

Online Video...<https://youtu.be/fyw-kXSasmo>

A spacious duplex apartment in City Point only five minutes walk from the buzzing Deansgate. This first floor apartment benefits from over 900 sq ft of living space with a full length balcony and a secure allocated undercroft parking space. Accommodation comprises on the lower floor of two double bedrooms, the master with an en suite shower room and a further bathroom off the hallway. Upstairs there is a extensive open plan living/kitchen area with a balcony off. Viewing is strongly recommended to avoid disappointment.

Directions

City Point 1 is a small development located close to Salford Central Station and Spinningfields



- CASH BUYERS ONLY!
- Duplex Apartment
- 2nd Floor & Top
- Secure Parking
- Two Bedrooms
- Bathroom & En-Suite
- Balcony
- Small Development

Postcode - M3 6AF

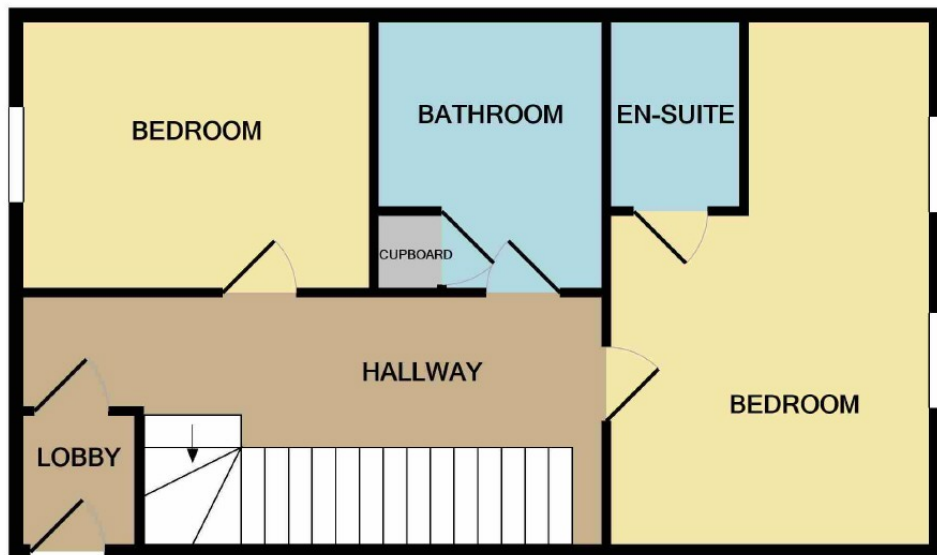
EPC Rating - C

Floor Area - 957 sq ft

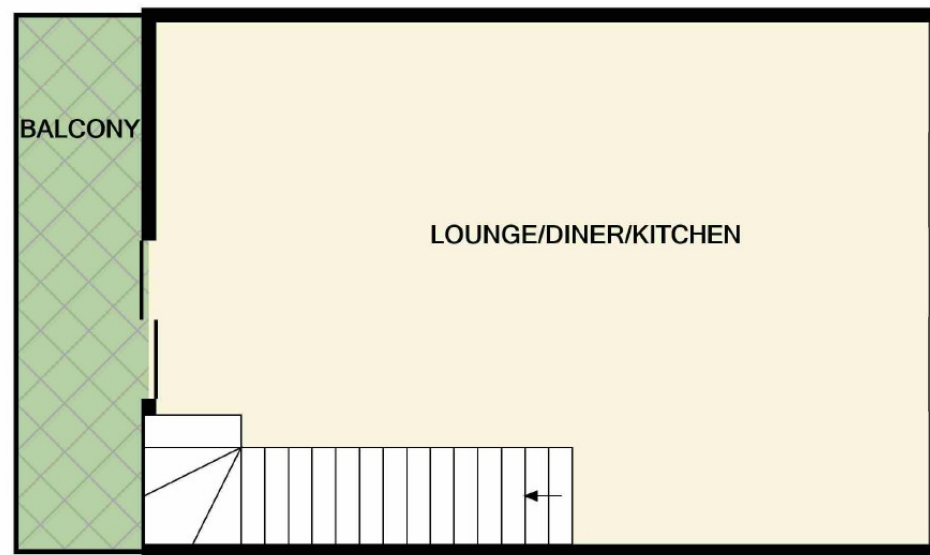
Local Authority - Salford Council

Council Tax - Band C





GROUND FLOOR



1ST FLOOR

Measurements are approximate. Not to scale. Illustrative purposes only
Made with Metropix ©2021



These particulars are believed to be accurate but they are not guaranteed and do not form a contract. Neither Jordan Fishwick nor the vendor or lessor accept any responsibility in respect of these particulars, which are not intended to be statements or representations of fact and any intending purchaser or lessee must satisfy himself by inspection or otherwise as to the correctness of each of the statements contained in these particulars. Any floorplans on this brochure are for illustrative purposes only and are not necessarily to scale.

Offices also at:
Chorlton | Didsbury | Disley | Glossop | Hale | Macclesfield | Manchester | Sale | Wilmslow | Withington

68 The Arches, Whitworth Street West, Manchester, M1

0161 833 9499

manchester@jordanfishwick.co.uk
www.jordanfishwick.co.uk