



Belvedere Row Apartments, Shepherds Bush
London W12

GARTONJONES.COM



Belvedere Row Apartments, Shepherds Bush London, W12

GARTON JONES.COM

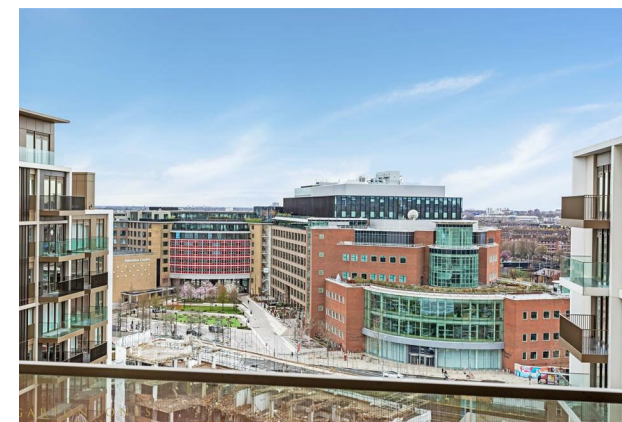
49 Marsham Street Lettings:
London SW1P 3DP +44 (0) 20 7340 0480
westminster@gartonjones.com
www.gartonjones.com

£550 Per Week

A bright and spacious 2 double bedroom apartment located on the 5th floor (with lift) brand new development in the heart of White City. This furnished apartment comprises of a large reception room with an open plan kitchen with integrated Miele appliances, there are built in wardrobes bedroom to both bedrooms, 2 modern bathrooms (1 en-suite), 2 large balconies and comfort cooling. Residents of the development will benefit from a 24-concierge service, a health spa with swimming pool, fitness centre, cinema room, private dining rooms and business suite. White City Living is exceptionally well positioned and is located next door to Westfield shopping centre. White City, Wood Lane and Shepherds Bush underground and mainline train services are close by. The apartment comes with one secure parking space.

The photos used are of an identical apartment on a different floor.

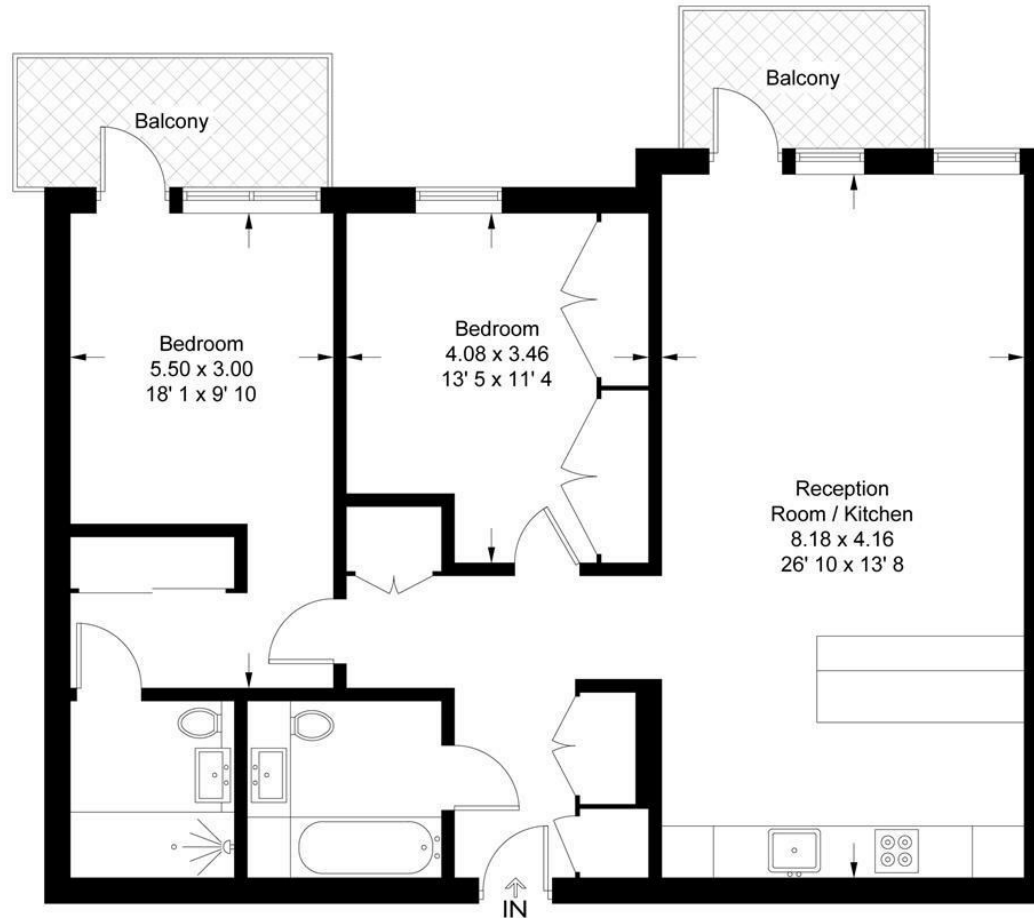
- 940 sq.ft (87.3sq.m)
- 5th Floor (With Lift)
- 2 Double Bedrooms
- Open Plan Reception Room
- Kitchen with Integrated Miele Appliances
- 2 Modern Bathrooms (1 En-suite)
- 2 Private Balconies & Secure Parking Available
- 24 Hour Concierge, Gym, swimming pool, and Cinema Room
- Next Door to Westfield Shopping Centre
- Walking Distance to White City, Shepherds Bush and Wood Lane Tube Stations



GARTON JONES
LONDON

Belvedere Apartments

Approximate Gross Internal Area = 940 sq ft / 87.3 sq m



Not to scale, for guidance only and must not be relied upon as a statement of fact
All measurements and areas are approximate only and have been prepared in
accordance with the current edition of the RICS Code of Measuring Practice

