

# Hewlett Road

Cheltenham GL52 6AD

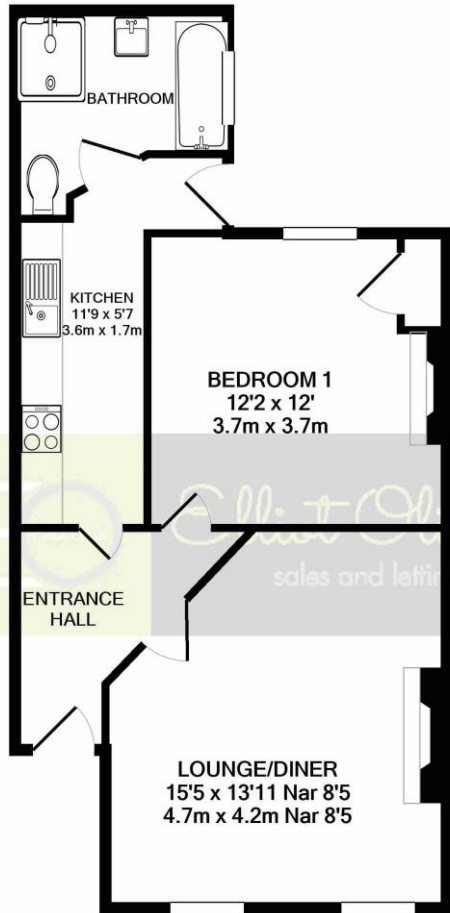


## Hewlett Road, Cheltenham GL52 6AD

Situated in a very central location close to the Cheltenham town centre is this sizable lower ground floor apartment. The apartment has been renovated to a very high standard throughout with underfloor heating, a re-fitted kitchen, bathroom, and completely decorated throughout. The layout consists of an entrance hall which leads you to all parts of the flat. The lounge/diner is at the front with ample room for living and dining, the double bedroom is at the rear alongside the re-fitted kitchen and stylish bathroom. Here you will find a double shower cubicle, and three piece suite. There is also the added benefits of some outside space at the rear with a courtyard garden, it also has its own entrance, gas central heating and also comes with a share of the freehold. A stunning apartment worthy of an internal viewing appointment.

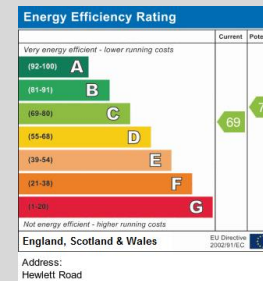






TOTAL APPROX. FLOOR AREA 538 SQ.FT. (50.0 SQ.M.)

Whilst every attempt has been made to ensure the accuracy of the floor plan contained here, measurements of doors, windows, rooms and any other items are approximate and no responsibility is taken for any error, omission, or mis-statement. This plan is for illustrative purposes only and should be used as such by any prospective purchaser. The services, systems and appliances shown have not been tested and no guarantee as to their operability or efficiency can be given  
Made with Metropix ©2021



**OFFICE**

101 Promenade,  
Cheltenham,  
Gloucestershire, GL50  
1NW  
info@elliottoliver.co.uk