



mark antony

SALES & LETTING AGENTS

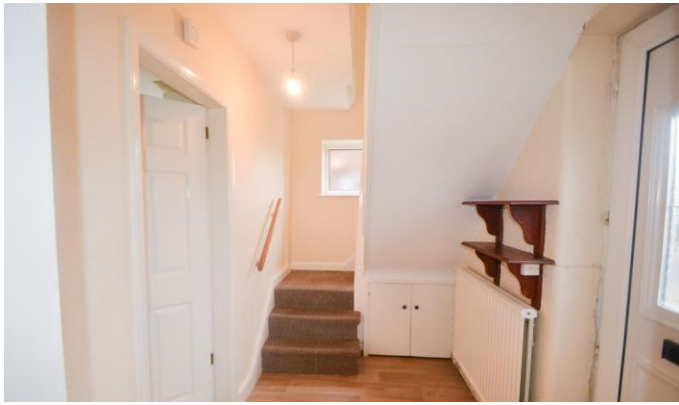


**Southdale Road, Paddington**

Warrington, Cheshire, WA1 3HD

**Rent £750 pcm**

Unfurnished



## Property Features

- Three Bedroom Semi-Detached
- Painted Throughout
- Parking for 2 Cars
- Spacious Kitchen
- EPC Rating: **D**                      Council Tax Band: **B**

## Full Description

SPACIOUS Three Bedroom Semi-detached Property in Paddington. WILL BE PAINTED THROUGHOUT prior to a new tenant moving in. Property has off road parking for 2 cars, airy lounge. Open plan Kitchen with breakfast bar through to conservatory with patio doors that lead onto the garden. Upstairs the property has 2 double bedrooms and a family bathroom. To the rear of the property, you will find an enclosed garden and along with a detached garage.

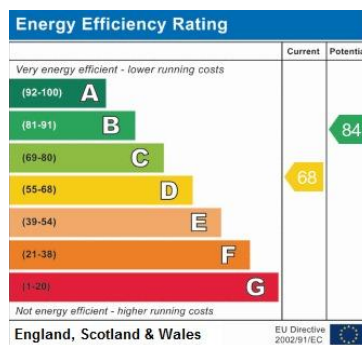
Note to Prospective Tenants:

Property is being painted throughout (all white) and cleaned prior to a new tenant moving in.

Appliances include:

Property includes: Double Oven, Hob, Extractor Fan.

**Available from: 10<sup>th</sup> November 2022**



82 London Road  
Stockton Heath  
Warrington  
Cheshire  
WA4 6LE

www.MarkAntonyEstates.com  
Lettings@MarkAntonyEstates.com  
01925 267070

### Notes:

- 1) Mark Antony Estates has produced this brochure in good faith, the details are set out as a general guide only and do not constitute any part of any contract. Any appliances, services or socket outlets or cables including: Electrical, Telephone, TV and Satellite have not been tested and are not guaranteed.
- 2) Any interested party should satisfy themselves about any matter of importance to them and not be solely reliant on the contents of this brochure before making a decision to rent.