



David
Astburys
ESTATE AGENTS



Priory Road, Crouch End N8
£450,000
Leasehold

15 Park Road, Crouch End, London, N8 8TE
davidastburys.com
0203 000 6787 | sales@davidastburys.com

15 Park Road, Crouch End, London, N8 8TE
davidastburys.com
0203 000 6787 | sales@davidastburys.com



- Period Conversion

- Second Floor (Top)

- Open Plan Kitchen and

Reception

- Leasehold - 152 Years

Remaining

- Plenty of Storage

- Hornsey Station (0.6 miles)

- Alexandra Palace Station (0.8 miles)

- 605 Square Feet

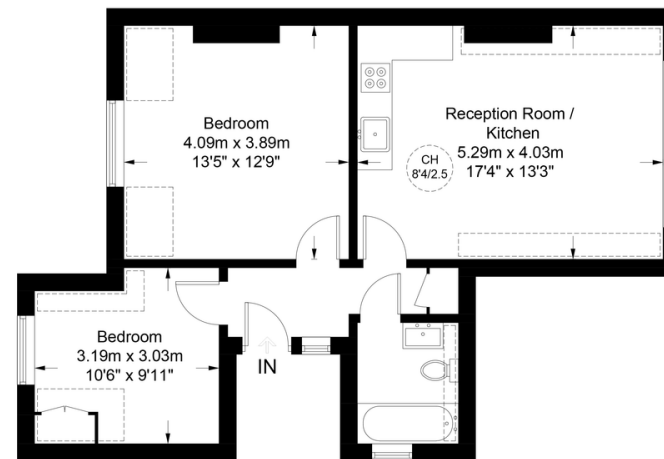


Priory Road, N8

Approximate Gross Internal Area = 605 sq ft / 56.2 sq m



[Dashed line symbol] = Reduced headroom below 1.5m / 5'0"



Second Floor

This plan is for layout guidance only. Not drawn to scale unless stated. Windows and door openings are approximate. Whilst every care is taken in the preparation of this plan, please check all dimensions, shapes and compass bearings before making any decisions reliant upon them. (ID747084)



Agents Note: Whilst every care has been taken to prepare these sales particulars, they are for guidance purposes only. All measurements are approximate and are for general guidance purposes only and whilst every care has been taken to ensure their accuracy, they should not be relied upon and potential buyers are advised to recheck the measurements.

