



- Contemporary and modern design
- Two Double bedrooms with fitted wardrobes
- Two Bathrooms with full size baths and showers

Flat 5 Athelstan House, 25 Station Road, Gloucester,

A superb modern open-plan two bedroom, first floor apartment situated in Gloucester

Guide Price £156,450



Property Description

Full Description

We are delighted to offer this superb new two bedroom, first floor apartment situated in Gloucesters' sought after development, Athelstan House. Built in 2016, Athelstan House is a unique development situated in the centre of Gloucester and at the heart of the planned £60m regeneration project of the Kings Quarter area.

This spacious and light apartment has triple aspect views and is both stylish and contemporary, comprising of entrance hall, open-plan reception and modern high gloss kitchen with integrated appliances, two double bedrooms with fitted wardrobes, en-suite bathroom including bath and shower, family bathroom and utility cupboard. The apartment further benefits from high ceilings, floor to ceiling windows, cable TV, high speed internet and an allocated parking space. Currently tenanted, the property serves as an excellent Buy-to Let investment but is equally attractive to the residential market. Athelstan House is a secure gated development and also includes a bicycle cleaning and storage area.

Tenure: Leasehold

Annual service Charge: Approx. £1,138.00

Annual ground rent: £250.00

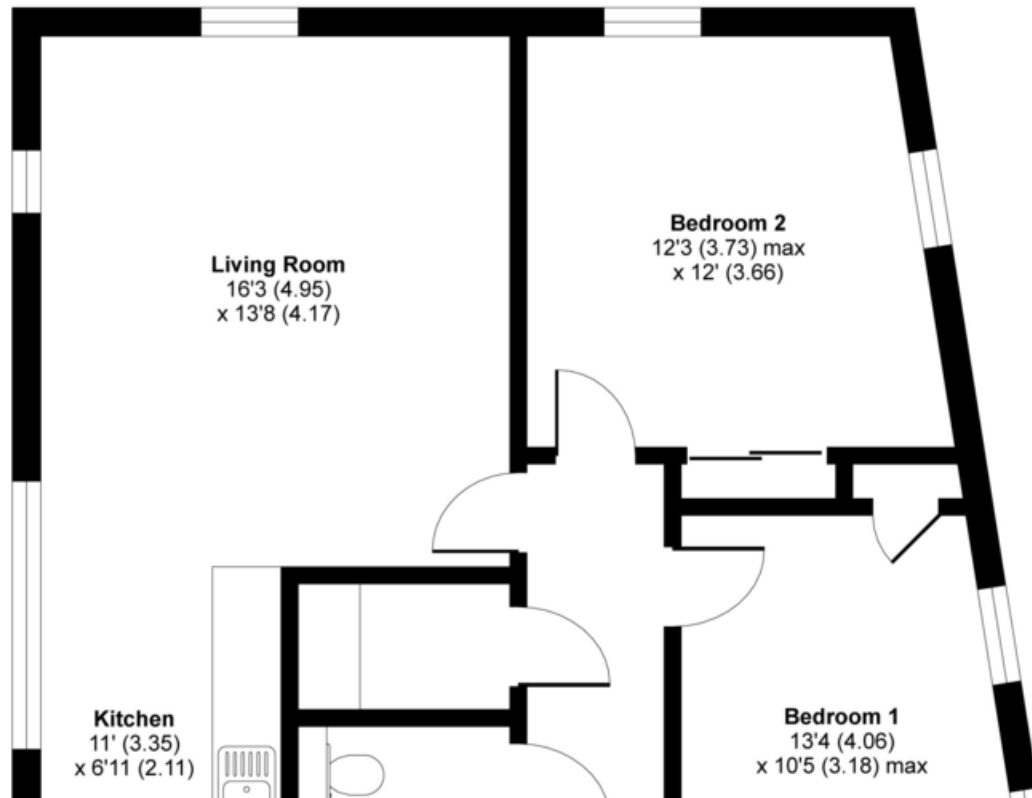


Gloucester Quays shopping centre and the regenerated docks with their many trendy bars and restaurants are nearby and the GL1 leisure centre, train station, bus station and city centre are within close proximity. Furthermore new shops, restaurants and retail units are planned for the area as part of the regeneration project.



Athelstan House, Station Road, Gloucester, GL1

APPROX. GROSS INTERNAL FLOOR AREA 785 SQ FT 72.9 SQ METRES



%epcGraph_c_1_334%

HEAD OFFICE
4 Bath Mews
Bath Parade
Cheltenham
Gloucestershire
GL53 7HL

CONTACT DETAILS
01242 256700
info@completepg.co.uk
www.completepg.co.uk

Agents Note: Whilst every care has been taken to prepare these sales particulars, they are for guidance purposes only. All measurements are approximate and are for general guidance purposes only and whilst every care has been taken to ensure their accuracy, they should not be relied upon and potential buyers are advised to recheck the measurements.