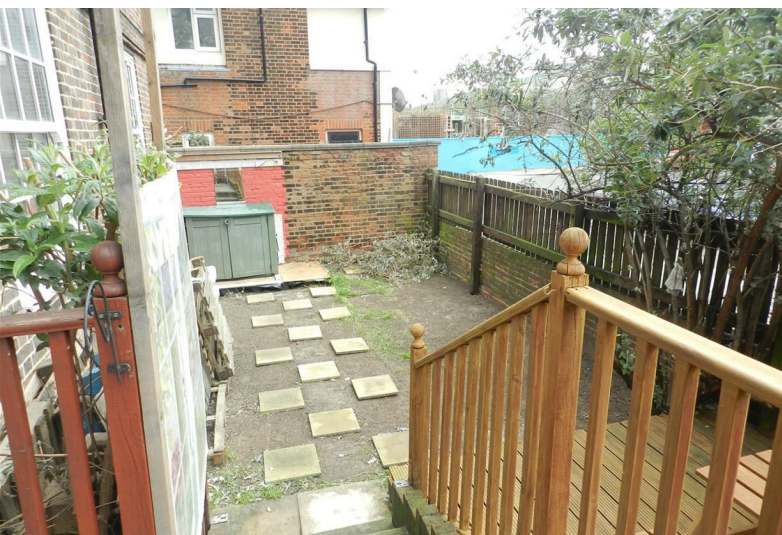


Ascalon House | , SW8



£1,730 Per Week

• Ground Floor Flat • 3 Double Bedrooms • Open Plan Reception/Kitchen • Bathroom and 2nd WC • Wooden Flooring • Large South Facing Private Garden • Excellent Transport Links • Close to Chelsea Bridge

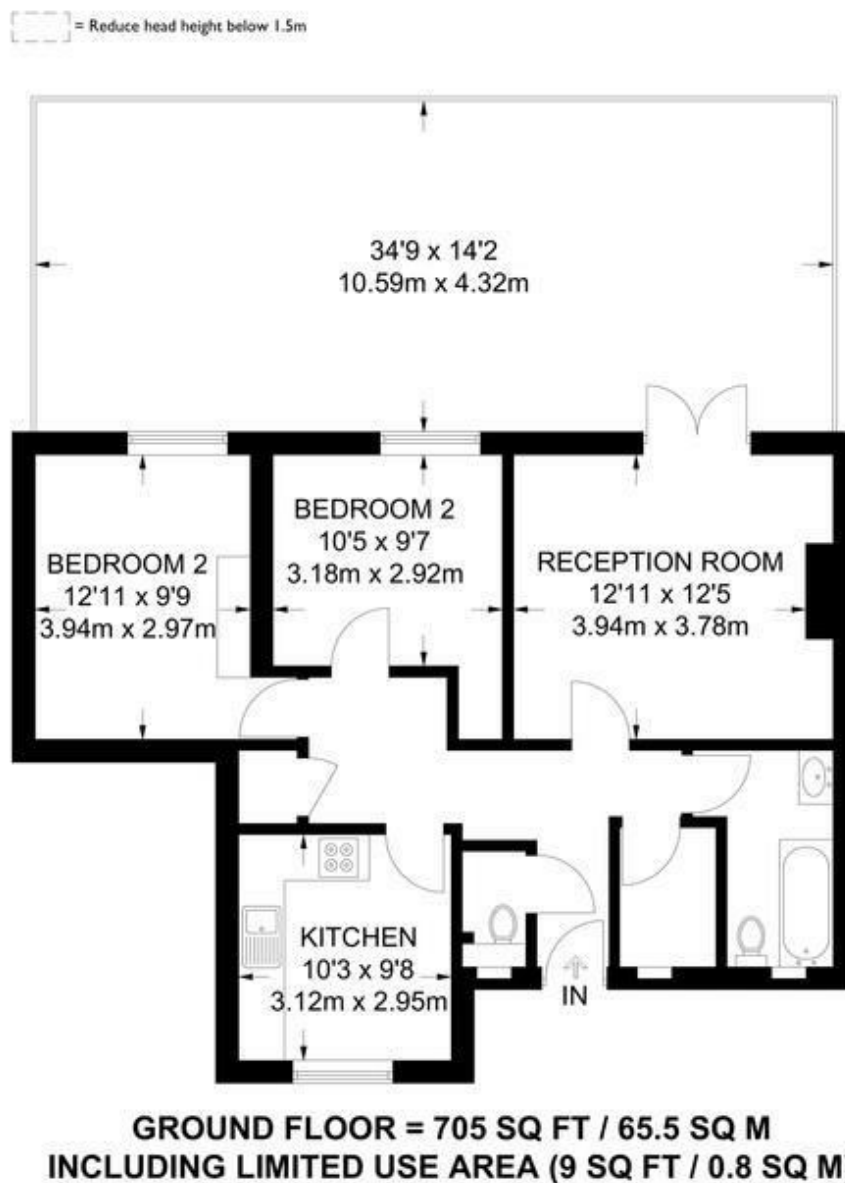
Ascalon House | , SW8



A well presented Ground floor garden flat located just moments from the new underground station at Battersea Power Station (Due to Open Autumn 2021).

Complete with a large eat-in kitchen with no separate reception room, 3 double bedrooms, bathroom, further WC, large walk-in cupboard, small study and large private south-facing rear garden. Has its own private front door, wooden flooring, gas central heating and double glazed windows.

Located within short walk of both Queenstown Road and Battersea Park Stations providing direct trains to Waterloo (11 minutes) and Victoria (5 minutes), excellent bus routes on hand too. Off street resident's parking permits available through Wandsworth. Available as of 1st June.



Energy Efficiency Rating		
	Current	Potential
Very energy efficient - lower running costs		
(92 plus) A		
(81-91) B		79
(69-80) C	67	
(55-68) D		
(39-54) E		
(21-38) F		
(1-20) G		
Not energy efficient - higher running costs		
England & Wales EU Directive 2002/91/EC		
Environmental Impact (CO ₂) Rating		
	Current	Potential
Very environmentally friendly - lower CO ₂ emissions		
(92 plus) A		
(81-91) B		82
(69-80) C	66	
(55-68) D		
(39-54) E		
(21-38) F		
(1-20) G		
Not environmentally friendly - higher CO ₂ emissions		
England & Wales EU Directive 2002/91/EC		

These particulars are designed to provide a guideline only and cannot be relied upon as a statement of fact. The description represents the opinion of the author and is not intended to provide false or misleading information. Any prospective purchaser should make further checks on its accuracy. All measurements are approximate and floorplans are for representation only.



Eden Harper
64 Battersea Park Road, London, SW11 4JP
0207 720 1116
info@edenharper.com
www.edenharper.com