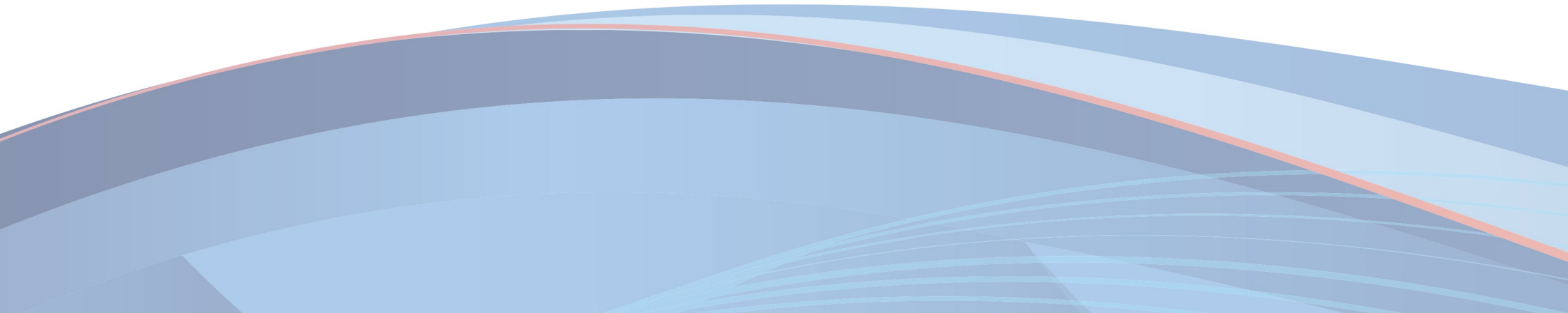




33 Winchester Street, Salisbury, SP1 1HG

Guide Price £250,000



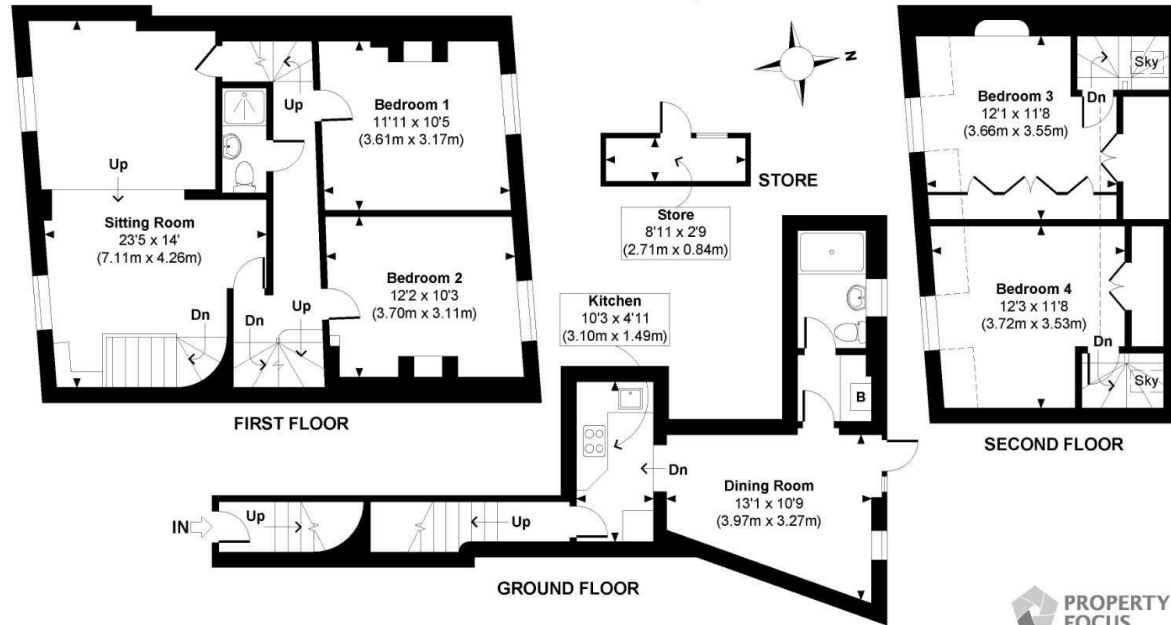






## Winchester Street

Approximate Gross Internal Area  
 Main House = 1312 Sq Ft / 121.92 Sq M  
 Store = 25 Sq Ft / 2.28 Sq M  
 Total = 1337 Sq Ft / 124.20 Sq M  
 Outbuildings are not shown in correct orientation or location.  
 Includes areas with Restricted room height.



Indicates restricted room height less than 1.5m.



© www.propertyfocus.co | Professional Property Photography & Floorplans  
 This plan is for illustrative purposes only and is not to scale. If specified, the Gross Internal Area (GIA), dimensions, North point orientation and the size and placement of features are approximate and should not be relied on as a statement of fact. No guarantee is given for the GIA and no responsibility is taken for any error, omission or misrepresentation.



49 High Street Salisbury Wiltshire SP1 2PD  
**01722 337575**  
[www.myddeltonmajor.co.uk](http://www.myddeltonmajor.co.uk)

Myddelton & Major for themselves and for the vendors or lessors of this property whose agents they are give notice that: – i) the particulars are set out as a general outline only for the guidance of intended purchasers or lessees, and do not constitute part of an offer or contract. ii) all descriptions, dimensions, reference to condition and necessary permissions for use and occupation, and other details are given without responsibility and any intending purchasers or tenants should not rely on them as statements or representations of fact, but must satisfy themselves by inspection or otherwise as to the correctness of each of them. iii) no person in the employment of Myddelton & Major has any authority to make or give any representation or warranty whatever in relation to this property.