



SPENCER & SENER
Integrity ♦ Honesty ♦ Trust



£625,000

239 Brunswick Park Road

London

N11 1EU

EPC Rating '68'

Council Tax Band

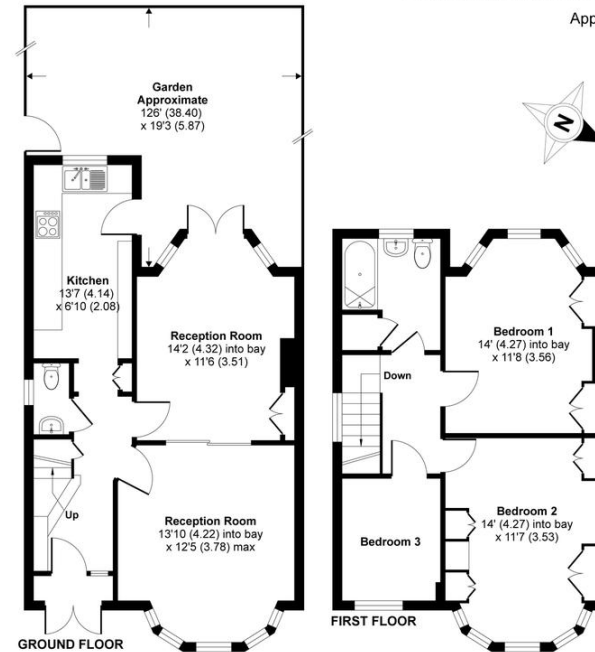
- Three Bedrooms
 - Semi Detached Family Home
 - Front Reception Room
 - Rear Reception Room
 - Fitted Kitchen
 - Current EPC Rating D
 - Off Street Parking
 - Downstairs WC
-

Agents Note: Whilst every care has been taken to prepare these particulars, they are for guidance purposes only. All measurements are approximate and for general guidance purposes only and whilst every care has been taken to ensure their accuracy, they should not be relied upon and potential buyers/tenants are advised to recheck the measurements

Brunswick Park Road, London, N11

Approximate Area = 982 sq ft / 91 sq m

For identification only - Not to scale



Floor plan produced in accordance with RICS Property Measurement Standards incorporating International Property Measurement Standards (IPMS2 Residential). © ricscom 2021. Produced for Spencer & Sener. REF: T03779