



Shimbrooks

Great Leighs, Chelmsford, CM3 1SG

Asking Price £220,000



Benefiting from an EN-SUITE to master, a 17' DUAL ASPECT lounge/diner and CARPORT with allocated parking is this two DOUBLE bedroom GROUND FLOOR apartment. Ideal for first time buyers and investors, located in a sought after village just 4 miles to Chelmsford's Park & Ride. Must View!



Shimbrooks, Great Leighs, Chelmsford, CM3 1SG

The accommodation, with approximate room sizes, is as follows:

ENTRANCE HALL:

Radiator, two storage cupboards, carpeted flooring, smooth ceiling.

LOUNGE / DINING ROOM:

17'11 x 12'10 (5.46m x 3.91m)

Double glazed bay window to front aspect and double glazed window to side aspect, radiator, carpeted flooring, smooth ceiling. Open plan to kitchen.

KITCHEN:

10'03 x 6'04 (3.12m x 1.93m)

Matching wall and base units with roll top work surfaces, one and a half bowl sink and drainer with central mixer taps, built-in electric oven, gas hob, extractor hood, space for fridge/freezer and washing machine, wall-mounted boiler, vinyl flooring and smooth ceiling.

MASTER BEDROOM:

11'10 x 10'00 (3.61m x 3.05m)

Double glazed window to side aspect, built-in wardrobe, radiator, carpeted flooring and smooth ceiling.

EN-SUITE TO MASTER BEDROOM:

Double glazed opaque window to side aspect, enclosed double shower unit, low level WC, pedestal wash hand basin, radiator, vinyl flooring and smooth ceiling.

BEDROOM TWO:

11'10 x 10'04 (3.61m x 3.15m)

Double glazed bay window to side aspect, radiator, carpeted flooring and smooth ceiling.

BATHROOM:

Panelled bath with central mixer taps and shower attachment, low level WC, pedestal wash hand basin, radiator, vinyl flooring and smooth ceiling.

EXTERIOR:-

COMMUNAL GARDENS:

Enclosed communal gardens mainly laid to lawn with hardstanding pathway.

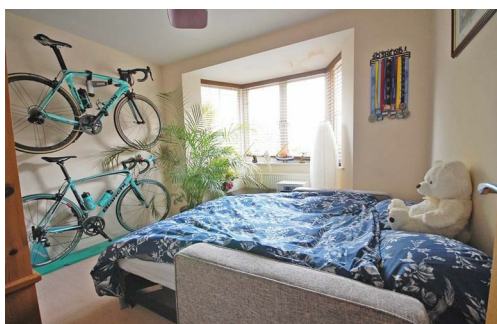
CARPORT & PARKING:

Carport with allocated parking plus visitors spaces.

AGENTS NOTES:

This property is a ground floor leasehold apartment - Additional information regarding ground rent and service charges available upon request.

For further information please contact Hamilton Piers.



At Hamilton Piers we aim to ensure our particulars are accurate and reliable. However, they do not constitute any offer or contract, nor are they to be taken as statements or representations of fact. No tests have been carried out by us in respect of services, systems or appliances contained in the specification and no guarantee as to their operating ability or efficiency is given (unless stated otherwise).

All measurements are a guide only and, therefore, can be approximated in some cases. If purchasing, fixtures and fittings, apart from those mentioned in the particulars, are to be agreed with the seller. Some particulars, please note, may also be awaiting the seller's approval. If clarification or further information is required, please contact us.

AWARD WINNING SALES AND LETTINGS ACROSS ESSEX

01376 341 141 | 01245 269 777 | 01621 212 450 | 01371 809 500 | 0207 079 1510