



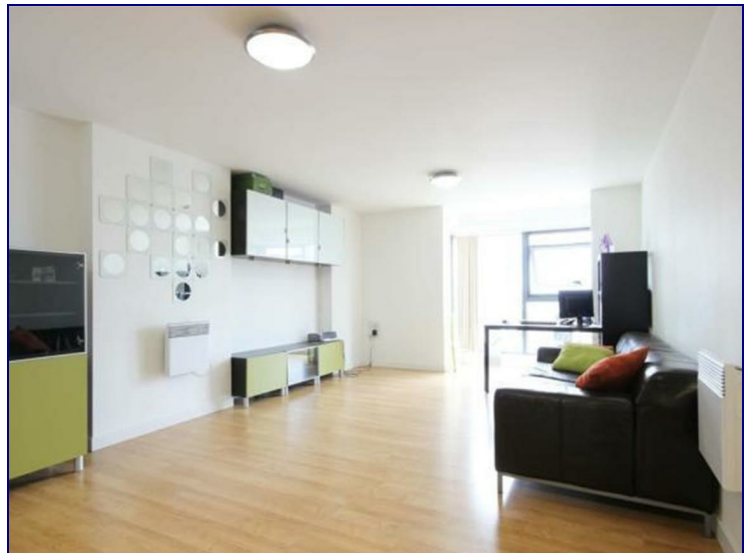
www.kings-group.net

488 Bethnal Green Road

London E2 0EA

Tel: 0207 613 2121

Cam Road, London, E15 2SL



£1,500 Per Month

A hugely impressive two double bedroom apartment enviably positioned on the 16TH FLOOR of this prestigious development. Immaculately presented throughout and offering an abundance of natural light, the property consists of two good sized double bedrooms, spacious modern bathroom and a superb open plan kitchen/reception area leading to a spacious private balcony offering excellent views. Burford Wharf Apartments is fantastically positioned to benefit from all that Stratford offers. Both Westfield Shopping Centre and the Olympic Park are a short walk away.





BURFORD WHARF APARTMENTS, STRATFORD, E15
TOTAL APPROX. FLOOR AREA 74.1 SQ.M. (798 SQ.FT.)

Whilst every attempt has been made to ensure the accuracy of the floor plan contained here, measurements of doors, windows, rooms and any other items are approximate and no responsibility is taken for any error, omission, or mis-statement. This plan is for illustrative purposes only and should be used as such by any prospective purchaser. The services, systems and appliances shown have not been tested and no guarantee as to their operability or efficiency can be given
 Made with Metropix ©2018

Energy Efficiency Rating		Current	Potential
Very energy efficient - lower running costs			
(92 plus) A			
(81-91) B			
(69-80) C			
(55-68) D			
(39-54) E			
(21-38) F			
(1-20) G			
Not energy efficient - higher running costs			
England & Wales	EU Directive 2002/91/EC		

Environmental Impact (CO ₂) Rating		Current	Potential
Very environmentally friendly - lower CO ₂ emissions			
(92 plus) A			
(81-91) B			
(69-80) C			
(55-68) D			
(39-54) E			
(21-38) F			
(1-20) G			
Not environmentally friendly - higher CO ₂ emissions			
England & Wales	EU Directive 2002/91/EC		



Associated Offices in London, Essex and Hertfordshire

Kings Head Office Tudor Lodge, Burton Lane, Goffs Oak, Hertfordshire EN7 6SY Tel: 01707-872000

