



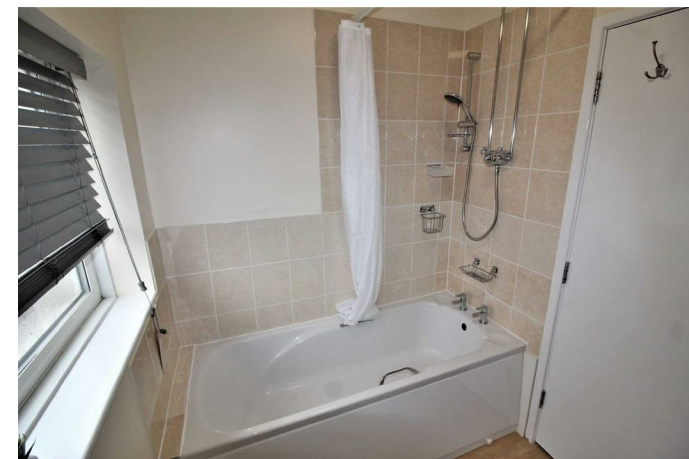
Calne Road, Lyneham
Lyneham, SN15 4PS

STRAKERS

22b Calne Road, Lyneham, Wiltshire,
SN15 4PS

- TO LET
- WELL PRESENTED
- TWO BEDROOMS
- ENCLOSED FRONT/SIDE GARDEN
- UNFURNISHED
- AVAILABLE NOW

£675 PCM



A well presented two bedroom house with an enclosed front/side garden and parking is available in a shared car park on a first come first served basis. The property benefits from having local amenities right on the door step. The property is more suited to a single occupant. Available now, unfurnished, £675pcm (sorry no pets).

Description

Accommodation comprises entrance hall, kitchen with oven, hob and space for additional appliances. There is also a useful storage cupboard.

Accessed via the kitchen is a cosy living room with external access to the side of the property.

Situated to the first floor are two bedrooms and a lovely modern bathroom with shower over.

Externally there is a low maintenance front and side enclosed garden together with parking.

A minimum contract for this property is 6 months. (Please bring passport OR driving licence & birth certificate with you at time of viewing).



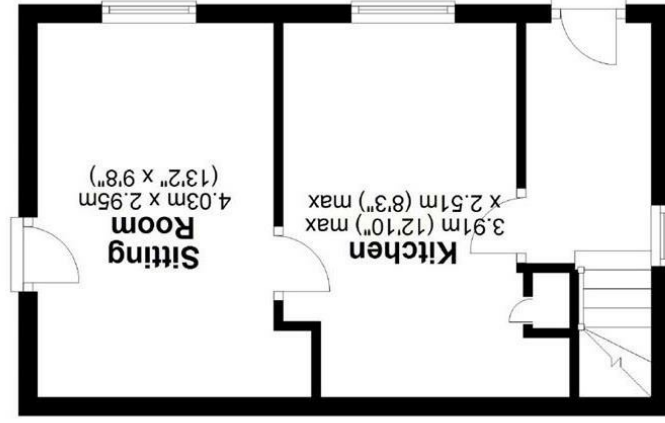
www.strakers.co.uk

Email: lettings@strakers.co.uk

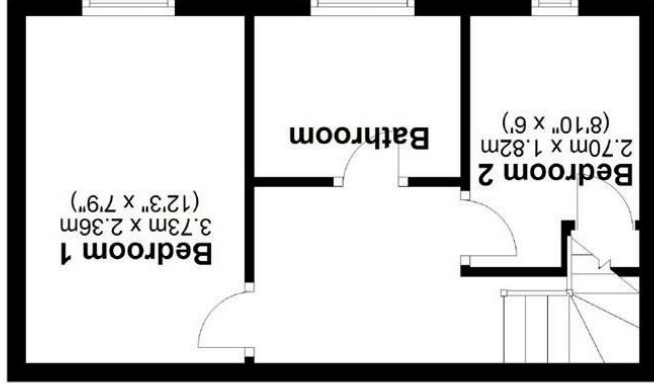
Tel: 01249 652717

22b Calne Road, Lyneham, Wiltshire, SN15 4PS

Total area: approx. 51.0 sq. metres (548.8 sq. feet)
Illustration for identification purposes only, measurements are approximate, not to scale.
Plan produced using PlanUp.



Ground Floor
Approx. 26.4 sq. metres (283.6 sq. feet)



First Floor
Approx. 24.6 sq. metres (265.1 sq. feet)