

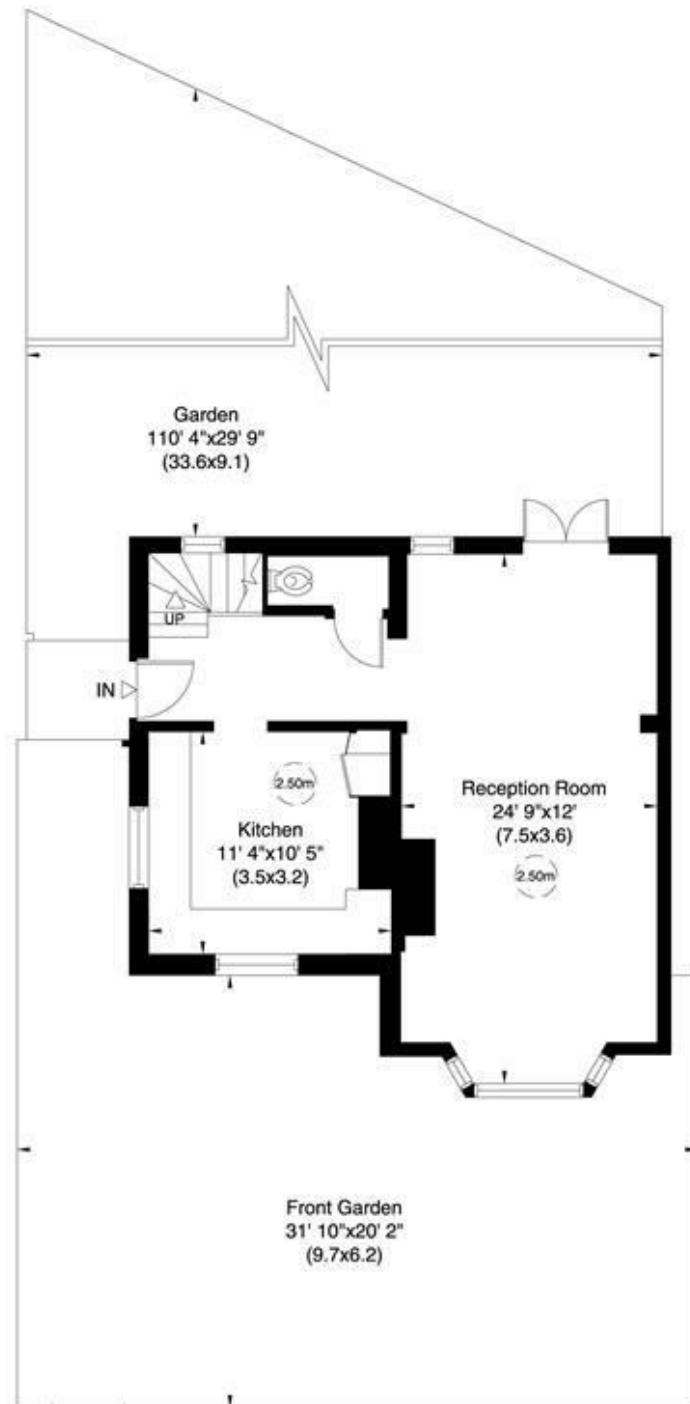
Brookland Rise, NW11

Gross internal area (approx.)

1007 Sq ft (94 Sq m)

For identification only, Not to Scale

Floor Plan by **capital group** 020 8671 7722



Ground Floor



First Floor



Brookland Rise, NW11

A stunning, brand newly renovated semi-detached house located on this popular quiet road on the north side of Hampstead Garden Suburb.

The house is spread onto two floors, with the ground floor comprising of a spacious reception room with dual aspect windows, separate brand new kitchen and guest cloakroom.

The first floor has three good sized bedrooms and modern bathroom.

In addition to the beautiful garden, the house benefits from being in the catchment area for some top local schools and within walking distance from shops and transport.

£695 Per Week

Not to scale, for guidance only and must not be relied upon as a statement of fact. All measurements and areas are approximate only (and have been prepared in accordance with the current edition of the RICS Code of Measuring Practice).



RENTALS 020 8209 1144
SALES 020 8458 7311
FAX 020 8209 0307

E rentals@glentree.com
E sales@glentree.com
W www.glentree.com

Glentree Estates Ltd
698 Finchley Road
London NW11 7NE

