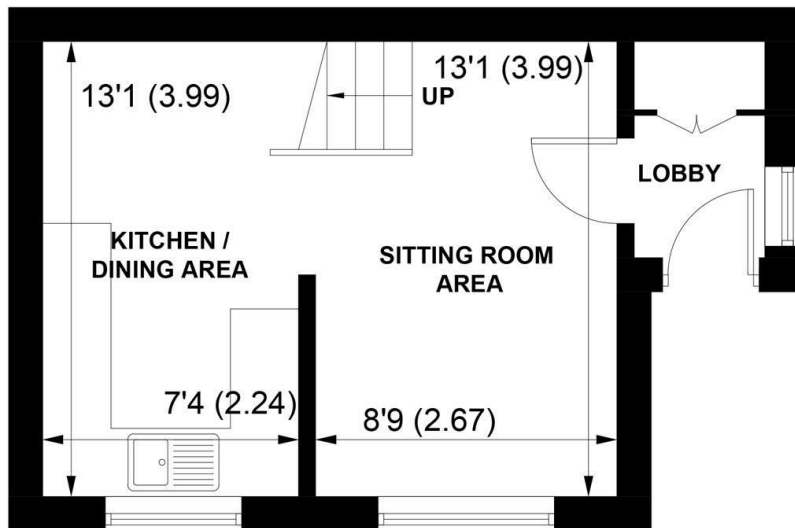




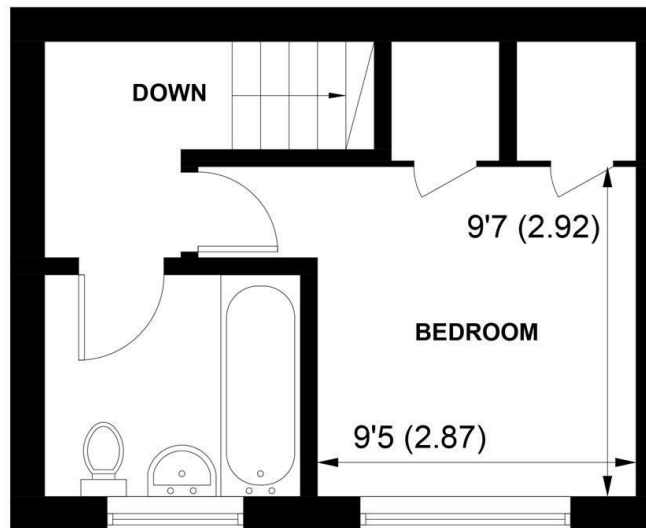
Sims Williams



54 THE MILLERS, YAPTON, WEST SUSSEX, BN18 0LE



GROUND FLOOR



FIRST FLOOR

APPROXIMATE GROSS INTERNAL AREA = 469 SQ FT / 43.6 SQ M
NOT TO SCALE (For illustrative purposes only as defined by RICS Code of Measuring Practice) 2021 ©
 Produced for Sims Williams

£176,400 Freehold

54, THE MILLERS,
YAPTON,
WEST SUSSEX, BN18 0LE

- End of Terrace House
- 1 Bedroom
- Sitting Room
- Open Plan Kitchen
- Bathroom
- Front Garden
- Allocated Parking Space
- Cul-de Sac Location
- Investment or First Time Buy

EPC RATING

Current = C
Potential = A

COUNCIL TAX BAND

Band = B

Situated in the popular village of Yapton, this starter home is set in a cul-de-sac location.

This one bedroom end of terrace house would make an ideal buy to let investment or first time buy.

The property consists of open plan sitting room and kitchen/diner. There is a bedroom and bathroom upstairs. The property benefits from gas heating and double glazing.

The kitchen has a range of wall and base units with work surfaces. There is space for an electric cooker, fridge/freezer, plumbing for a washing machine and space for a tumble drier. There is also ample space for a dining room table and chairs.

The good size bedroom has large built in wardrobes. The coloured bathroom suite comprises bath, wash hand basin and WC.

Outside the front garden is laid to lawn. There is also an allocated parking space.

Disclaimer

As the seller's agent we are not surveyors or conveyancing experts and as such we cannot and do not comment on the condition of the property or issues that may affect this property, unless we have been made aware of such matters. Interested parties should employ their own professionals to make such enquiries before making any transactional decisions.

Directions

From the shops at Main Road, Yapton proceed in a southerly direction along Bilsham Road. Take the 2nd right into Mill View Road. The Millers can be found at the end of Mill View Road.

