



# MILE



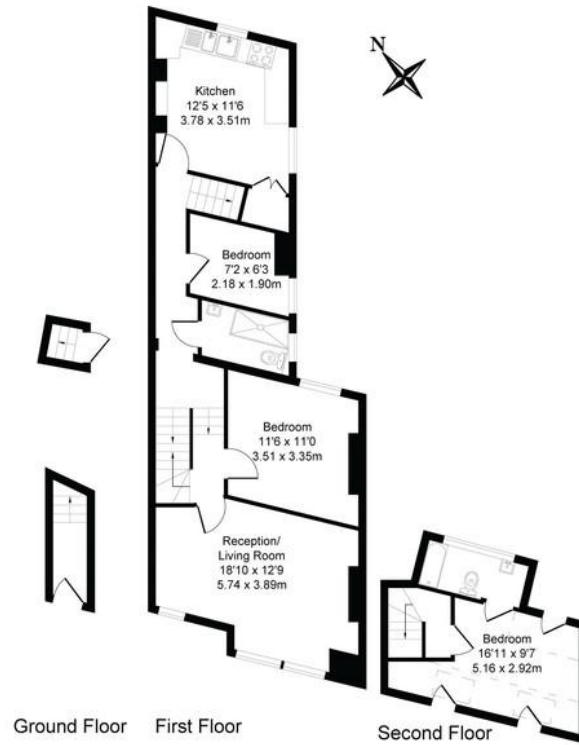
Drayton Road, London NW10

£2,150 pcm

Mile are delighted to bring this stunning split level apartment to market for rent. This generously proportioned, light and airy apartment boasts a reception room with bay windows, three good size bedrooms, a great separate 12ft kitchen / diner, two modern bathrooms (one en-suite) and access to a well maintained and private garden. Offered in excellent condition, the flat also benefits from high ceilings, wooden flooring, carpet and double glazed windows throughout, many original features, an abundance of light and storage space. The property is offered on an unfurnished basis and is available July 2023. Drayton Road is ideally positioned close to all the local amenities of Harlesden is within easy reach of a wide selection of shops, bars and restaurants of Willesden Junction. Maple Walk school and Roundwood Park open space are only a few minutes' walk from the property. The nearest station is Willesden Junction (Bakerloo line/Overground).

- Split level apartment
- Three bedrooms
- Two bathrooms
- Private garden
- Own entrance
- Excellent condition
- Available Mid February 2025
- Part furnished
- Short walk to open green space of Roundwood Park
- Close to shops and transport

Approximate Gross Internal Area  
961 sq ft - 89 sq m



**MONEY LAUNDERING REGULATIONS 2003:** Intending purchasers will be asked to produce identification documentation at a later stage and we would ask for your co-operation in order that there will be no delay in agreeing the sale.

**General:** While we endeavour to make our sales particulars fair, accurate and reliable, they are only a general guide to the property and, accordingly, if there is any point which is of particular importance to you, please contact the office and we will be pleased to check the position for you, especially if you are contemplating travelling some distance to view the property.

**Measurements:** These approximate room sizes are only intended as general guidance. You must verify the dimensions carefully before ordering carpets or any built-in furniture.

**Services:** Please note we have not tested the services or any of the equipment or appliances in this property, accordingly we strongly advise prospective buyers to commission their own survey or service reports before finalising their offer to purchase.