



Jordan Fishwick

ANCOATS
6 Pollard Street



6 Pollard Street, Ancoats
M4 7BN
Price £209,000



The Property

Investment Opportunity..... Online Video...<https://youtu.be/FNBsJUaARpE>

EWS-1 Available Investor Mortgages Welcome.

Stunning Duplex's with private entrance to these 10 apartments. All are apartments are in a converted Mill in Ancoats. Spacious entrance, living/kitchen with modern appliances, bathroom and second bedroom on the ground floor with large Mezzanine bedroom overlooking the living room above. Walk in en-suite. Feature double height ceilings, electric heaters and updated flooring. Tenanted till May 2022 at £950pcm

Parking space available at additional £20,000

Please contact the office for further details.

Directions

6 Pollard Street comprises of 10 individual duplex apartments with its own entrance. Located in Ancoats and is only a short distance from the City Centre and Piccadilly Station.

- Investors Only
- Tenanted Till May 2022
- Rented At £950pcm
- Ground Floor Duplex
- Modern Fully Fitted Kitchen
- Double Height Windows
- Huge Mezzanine Bedroom
- Wet Room & Bathroom
- Mill Conversion
- Two Bedrooms

Postcode - M4 7BN

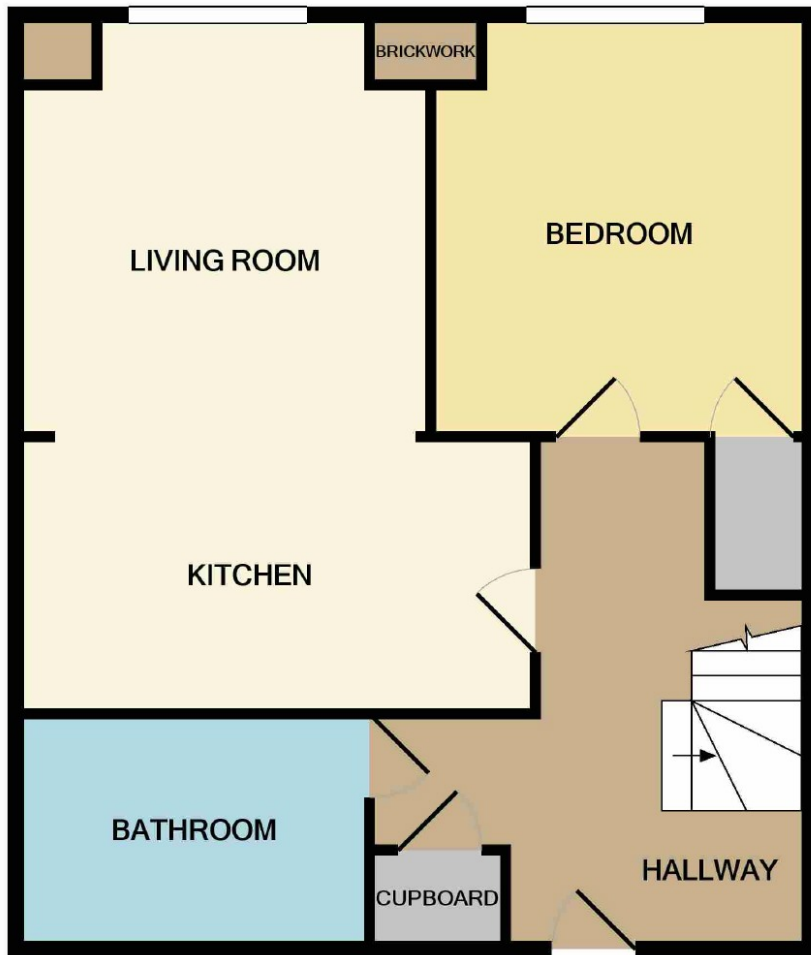
EPC Rating - E

Floor Area - sq ft

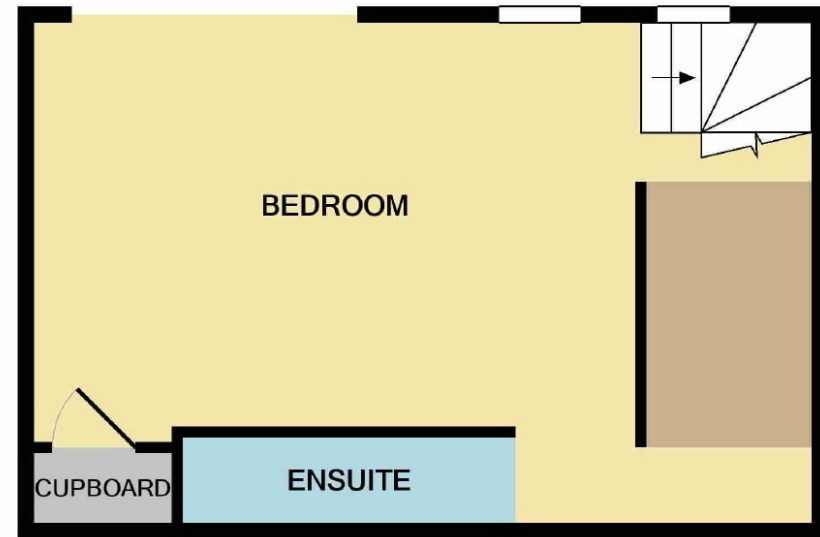
Local Authority - Manchester Council

Council Tax - Band D





GROUND FLOOR



1ST FLOOR

Measurements are approximate. Not to scale. Illustrative purposes only
 Made with Metropix ©2021



These particulars are believed to be accurate but they are not guaranteed and do not form a contract. Neither Jordan Fishwick nor the vendor or lessor accept any responsibility in respect of these particulars, which are not intended to be statements or representations of fact and any intending purchaser or lessee must satisfy himself by inspection or otherwise as to the correctness of each of the statements contained in these particulars. Any floorplans on this brochure are for illustrative purposes only and are not necessarily to scale.

Offices also at:
 Chorlton | Didsbury | Disley | Glossop | Hale | Macclesfield | Manchester | Sale | Wilmslow | Withington

68 The Arches, Whitworth Street West, Manchester, M1

0161 833 9499

manchester@jordanfishwick.co.uk
 www.jordanfishwick.co.uk