

- Three Bedroom Town House
- Gas Central Heating
- Allocated Parking
- Well Presented Throughout

## The Square, Boyd Terrace, Westerhope, Newcastle Upon Tyne

£145,000

An appealing three bedroom townhouse, extremely well presented throughout. The property briefly comprises of hallway, living room, kitchen, wc, three bedrooms, bathroom and shower room. Externally benefitting from a paved gated area to the rear of the property ideal for secure parking. Ideally located to access local amenities.



## Property Description

SEVEN KEYS welcome to the market this extremely appealing three-bedroom townhouse, extremely well presented throughout and with good transport links to Newcastle City Centre and surrounding areas. The property has recently undergone extensive refurb works, new flooring throughout and an additional en-suite shower room added to the top floor bedroom.

The property briefly comprises of hallway, living room, kitchen, wc, three bedrooms, bathroom, and shower room. Externally benefitting from a paved gated area to the rear of the property ideal for secure parking. Ideally located to access local amenities.

Book your viewing online today at [SevenKeys.co.uk](http://SevenKeys.co.uk).

### HALLWAY

Entered via UPVC door leading into the hallway with newly laid carpet.

### LIVING ROOM

Double glazed window to the front of the property, newly laid carpet, radiator and TV point.

### KITCHEN

Fitted kitchen with a range of wall and base units, integrated hob and oven, plumbing for washing machine, integrated dishwasher, stainless steel sink and drainer with mixer tap, tiled flooring and radiator.

### WC

WC downstairs, toilet, wash basin.

### BEDROOM ONE

Generous double bedroom with double glazed windows, radiator and fitted wardrobes.





### **BEDROOM TWO**

Bedroom with double glazed windows, radiator and carpet.

### **BEDROOM THREE**

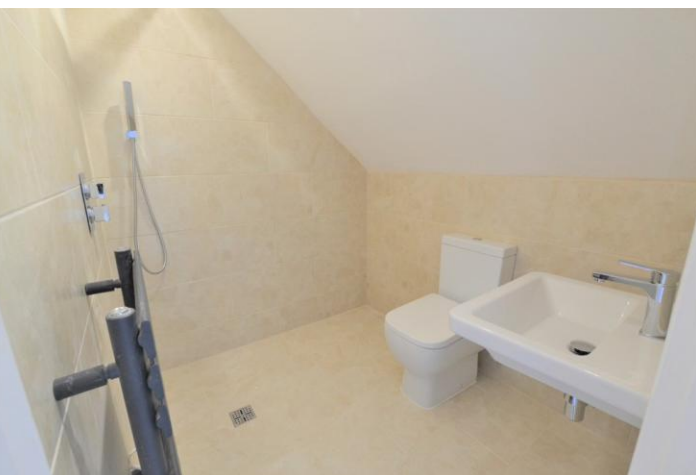
Located on the second floor. Newly laid carpet with two velux sky lights. Radiator and access into the en-suite shower room.

### **EN-SUITE**

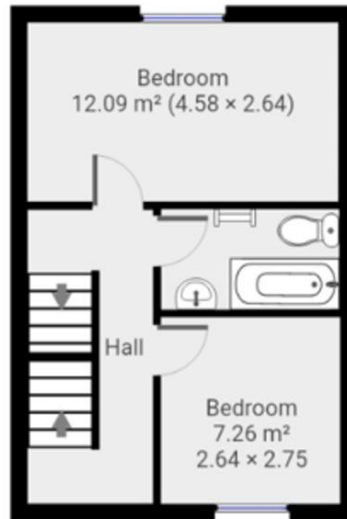
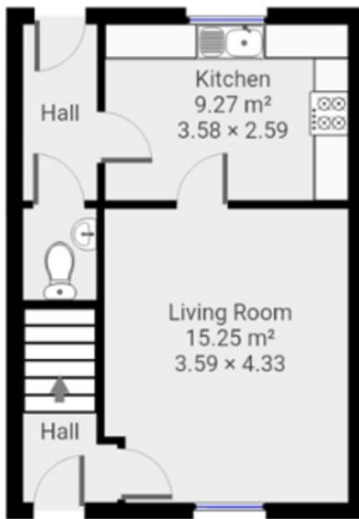
Fully refurbished en-suite shower room. Fit like a wet room with rain head shower, low level toilet, wall hung basin, anthracite towel rail and fully tiled walls and flooring.

### **BATHROOM**

Modern white suite comprising of panelled bath with overhead shower, pedestal wash basin, low level toilet, towel radiator and recently replaced flooring.







THIS FLOORPLAN IS PROVIDED WITHOUT WARRANTY OF ANY KIND. SEVEN KEYS DISCLAIMS ANY WARRANTY INCLUDING, WITHOUT LIMITATION, SATISFACTORY QUALITY OR ACCURACY OF DIMENSIONS.

Score	Energy rating	Current	Potential
92+	A		
81-91	B		88   B
69-80	C	77   c	
55-68	D		
39-54	E		
21-38	F		
1-20	G		