



Thames Crescent, London, W4 2RU

£1,895,000

WHITMAN & CO.

SALES · LETTINGS · COMMERCIAL

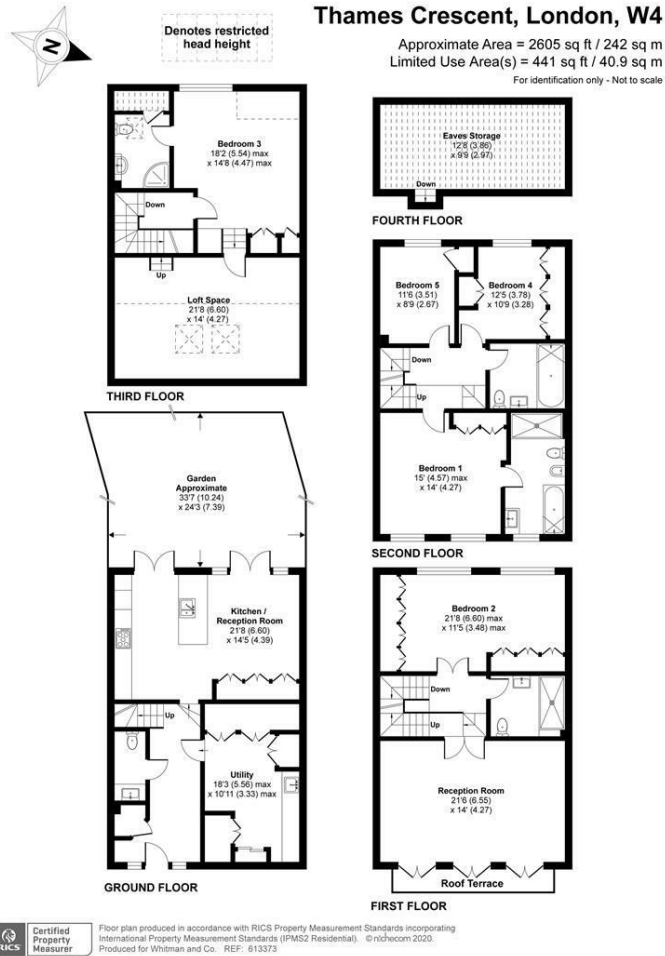
- Direct river views
- Private garden and terrace
- Communal riverside garden
- Secured gated development
- Off street parking for 2 cars
- 2600 sqft Townhouse

Tenure - Freehold
 Local Authority - Hounslow
 Council Tax - Band H
 Service Charge: £1370.94 p/a

THE PROPERTY

Virtual Tour Available An impressive five-bedroom townhouse with direct river views, set with this exclusive gated riverside development. Offering in excess of 2600sqft the house comprises; five double bedrooms, four luxury bathrooms, formal reception with French windows leading to a balcony with views of the river Thames, large entrance hall, 21' fully integrated kitchen/breakfast room, cloakroom, utility room/integral garage, private landscaped garden, off-street parking for two cars, large loft storage with landing access. The development has direct access to the towpath and further benefits from a communal riverside garden. Situated within close proximity of numerous transport facilities, Chiswick House and Grounds and Chiswick High Road's extensive facilities. No chain

SITUATION



5-7 Turnham Green Terrace, Chiswick, London, W4 1RG

Tel 020 8747 8300

E-mail sales@whitmanandco.com

Website www.whitmanandco.com



MISREPRESENTATION ACT 1967

Whitman & Co. for themselves and for the vendors give notice that these particulars do not constitute any part of, an offer of contract. All statements contained in these particulars are made without responsibility on the part of Whitman & Co. or the vendor. None of the statements contained in these particulars is to be relied upon as statements or representations of facts. Any intending purchaser must satisfy himself by inspection or otherwise as to the correctness of each of the statements contained in these particulars. The vendor does not make or give, and neither Whitman & Co. or any person in their employment has any authority to make or give, any representation or warranty whatever in relation to the property.