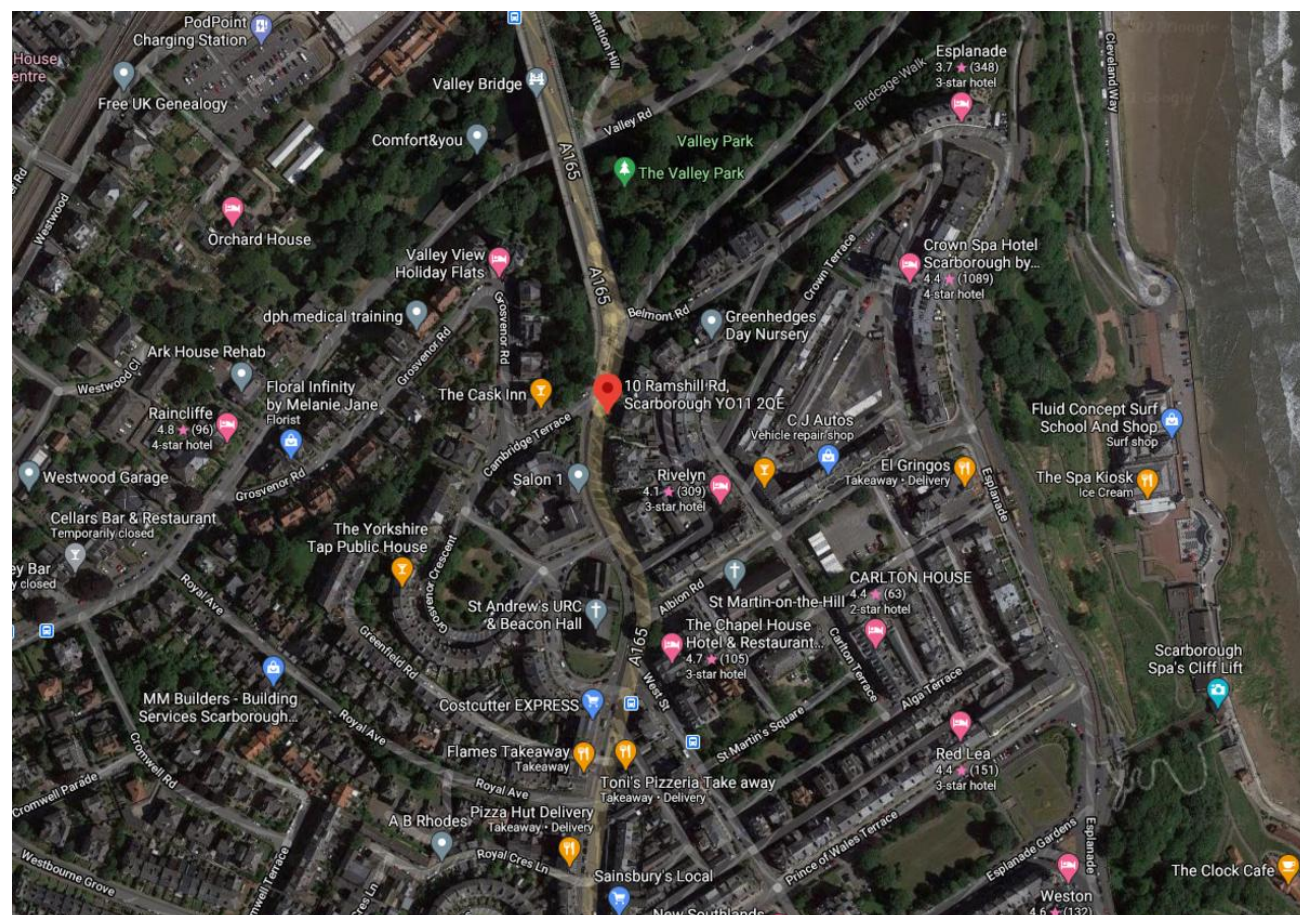


**Bank House, 10 Ramshill Road, Scarborough**

**£149,995**



Full EPC information available on request.

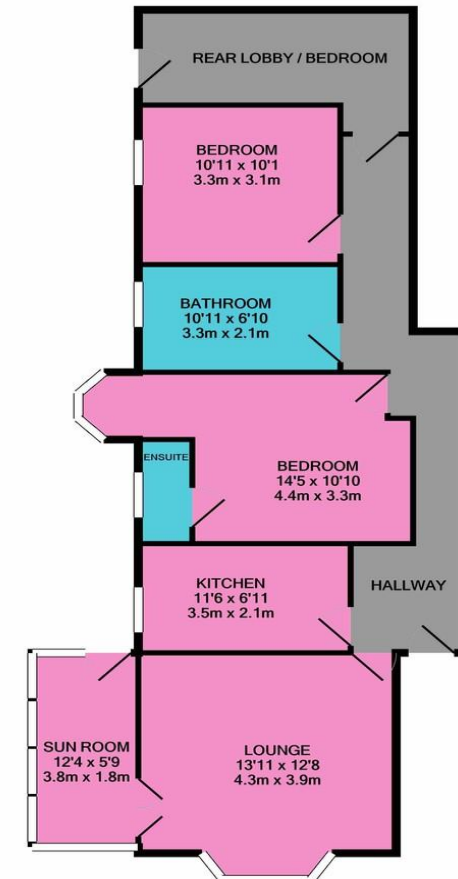
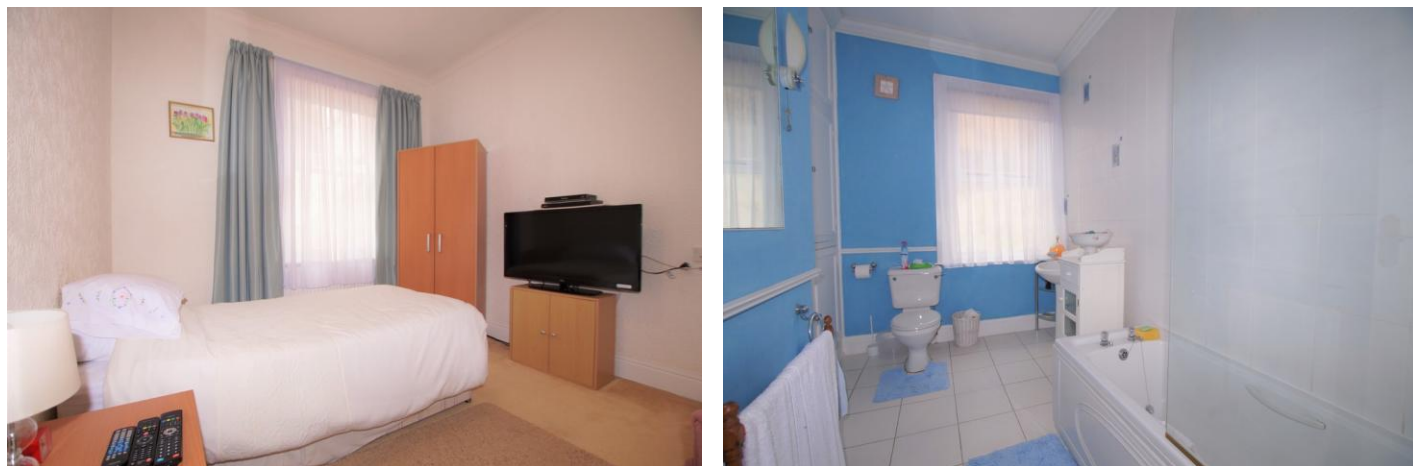
- Ground floor freehold apartment
- 2 Private entrance doors
- Large sitting room
- Conservatory + outdoor utility room
- 3 Bedrooms
- Garden area to front
- Patio and seating area to side
- Gas central heating

Please note that under the Property Misdescriptions Act 1991 we have endeavoured to make these particulars as reliable and accurate as possible but their accuracy is not guaranteed and they do not form part of any contract as they are prepared as a general guide. We have not carried out a detailed survey or tested any of the appliances, services or specific fittings. Room sizes should not be relied upon for carpets and furnishings. Internal photographs are intended as a guide only and it should not be assumed that any furniture/fittings are included in the sale. Where shown details of the lease, ground rent and service charge have been provided by the vendor and their accuracy cannot be guaranteed. The buyer is advised to obtain verification from their Solicitor or Surveyor.



**GROUND FLOOR 3 BEDROOM APARTMENT** in this handsome detached house on Ramshill.

We are delighted to offer for sale this spacious ground floor apartment with garden to the front and seating area to the side of the home. The property briefly comprises of a sun room which in turn gives access to the spacious sitting room. The sitting room has a bay window and feature stone fireplace with inset gas fire. The kitchen is fitted with a good range of white units and has space for an oven, under counter fridge and under counter freezer. The large master bedroom has a walk in storage cupboard, bay window to the side and sink. The modern family bathroom is fitted with a white 3 piece suite and further benefits from a shower over the bath and shower screen. The second bedroom is of double size and the third bedroom is also of double size, currently used as a dining room. This room also has a separate entrance door leading onto the seating area. The outside utility room is plumbed for a washing machine and there is also space for a tumble drier.



TOTAL APPROX. FLOOR AREA 935 SQ.FT. (86.9 SQ.M.)  
 Whilst every attempt has been made to ensure the accuracy of the floor plan contained here, measurements of doors, windows, rooms and any other items are approximate and no responsibility is taken for any error, omission, or mis-statement. This plan is for illustrative purposes only and should be used as such by any prospective purchaser. The services, systems and appliances shown have not been tested and no guarantee as to their operability or efficiency can be given.  
 Made with Metropix ©2021