

Hogg & Hogg

Estate Agents

1 Beckgrove Close, Pengam Green, Cardiff, CF24 2SE

£220,000



www.hoggandhogg.wales



Property Description

PROPERTY DESCRIPTION

Fantastic opportunity to purchase a stunning recently re-furnished three bedroom semi in Pengam Green. Positioned in a quiet cul de sac location with quick and easy access to the City Centre and the A48/M4 links.

The property itself comprises a welcoming lobby with cloakroom/w.c just off. Generous living room spacious with newly fitted kitchen dining room beyond, opening out onto the larger than average rear and side gardens which continues around to the front garden. To the first floor are the three bedrooms and newly fitted bathroom. Newly fitted combination boiler with new radiators throughout. New flooring throughout. Replacement internal doors. Garage with off road parking.

ENTRANCE HALL

Property entered via part glazed front door into hallway. Grey laminate flooring. New radiator. Door to cloakroom. Door to living room.

CLOAKROOM

Window to the front aspect. Low level w.c. corner vanity wash hand basin. New Radiator. Continuation of laminate flooring.

LIVING ROOM

15' 11" x 13' 10" (4.85m x 4.22m)

Generous living room with window to the front aspect. Large under stair storage cupboard. New Radiator. New grey carpet. Door to kitchen diner.



KITCHEN/DINER

15' 11" x 9' 7" (4.85m x 2.92m)

Great size kitchen diner with ample space for a dining table and chairs.

Well-appointed newly fitted kitchen with a range of white gloss wall and floor units with complementary work tops over. Stainless steel sink and drainer with mixer tap. Built in electric oven with gas hob above and concealed extractor hood over. Built in dishwasher. Space and plumbing for washing machine and space for full height fridge freezer. Tiled splash backs.

New laminate flooring, new radiator. Two windows to the rear aspect and glazed door opening onto the rear garden.

FIRST FLOOR LANDING

Approached via carpeted staircase to landing area.

Airing cupboard housing new combi boiler. Access to all bedrooms and bathroom.

BEDROOM ONE

12' 9" x 7' 10" (3.9m x 2.4m)

Double master bedroom with window to the front aspect. New radiator. New carpet.

BEDROOM TWO

10' 9" x 8' 2" (3.3m x 2.5m)

Further double bedroom with window to the rear aspect. New carpet. New radiator.

BEDROOM THREE

7' 10" x 7' 6" (2.4m x 2.3m)

Good size single bedroom with window to the front aspect. New carpet. New radiator.



BATHROOM

7' 2" x 5' 6" (2.2m x 1.7m)

Newly fitted modern bathroom suite with obscured window to the rear. Panelled bath with shower over and glass shower screen. Close coupled w.c. Pedestal wash hand basin. Laminate flooring. New radiator.







FRONT GARDEN

Laid to lawn on either side of block paved pathway.
Low level perimeter wall with wrought iron railings.

REAR AND SIDE GARDENS

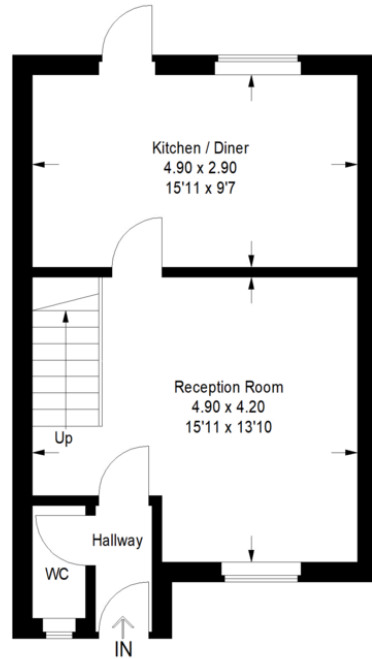
Generous rear garden with pathway to the rear door
with established beds and lawned area continuing to
the side. Continuation of brick perimeter wall.

GARAGE

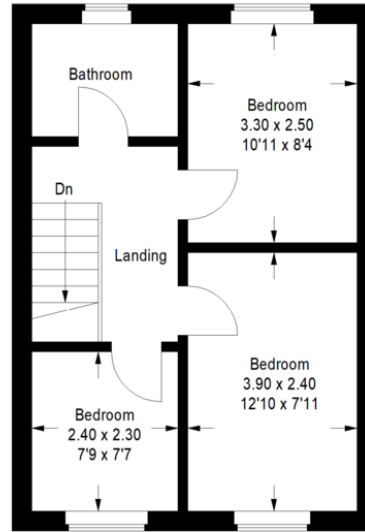
Single garage with up and over door. Parking space in
front.



Beckgrove Close

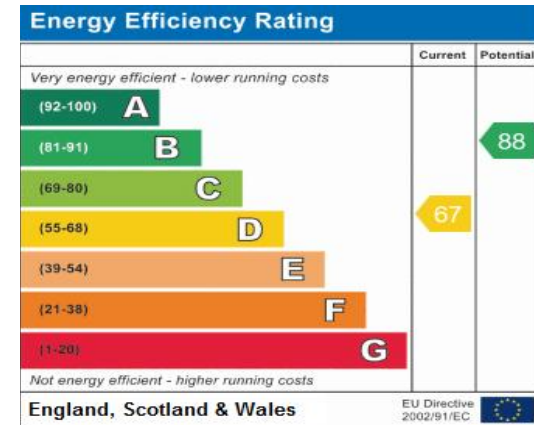


Ground Floor



First Floor

Illustration for identification purposes only, measurements are approximate, not to scale.
FloorplansUsketch.com © 2021 (ID 749193)



Contact Us

email sales@hoggandhogg.wales

telephone 02920 10 25 25 www.hoggandhogg.wales