

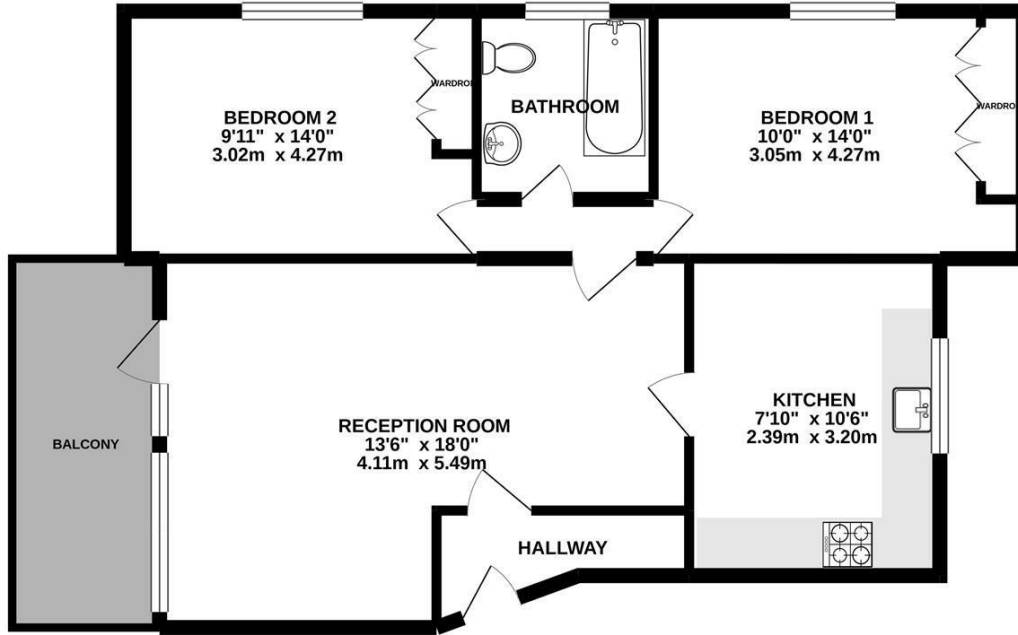
**Cambridge Park  
East Twickenham  
TW1 2JZ**

£1,495

**ChaseBuchanan**

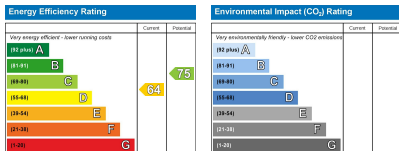


**GROUND FLOOR**  
730 sq.ft. (67.8 sq.m.) approx.



TOTAL FLOOR AREA: 730 sq.ft. (67.8 sq.m.) approx.

Whilst every attempt has been made to ensure the accuracy of the floorplan contained here, measurements of doors, windows, rooms and any other items are approximate and no responsibility is taken for any error, omission or mis-statement. This plan is for illustrative purposes only and should be used as such by any prospective purchaser. The services, systems and appliances shown have not been tested and no guarantee as to their operability or efficiency can be given.  
Made with Metropix ©2021



- Two double bedrooms
- Private balcony
- Newly re-decorated
- First floor flat
- Fantastic location
- EPC - D

A very bright and spacious two double bedroom first floor flat with balcony in a great location. This property has just been re-decorated, with brand new carpets and is situated within a very short walk from the River Thames and Richmond town centre, with local coffee shops and a supermarket just around the corner. The flat itself has a large bright reception room with doors leading to the private balcony. There are two double bedrooms, both with built in wardrobes and a spacious kitchen and bathroom.

Chase Buchanan are bonded members of ARLA Propertymark.

For more information or to book a viewing, please contact:

**020 8744 2888**

**ChaseBuchanan**

124 St Margarets Road, St Margarets, TW1 2AA

Care has been taken in the preparation of these particulars, however, their accuracy is not guaranteed and they do not form part of any contract. Measurements stated must be considered maximum.