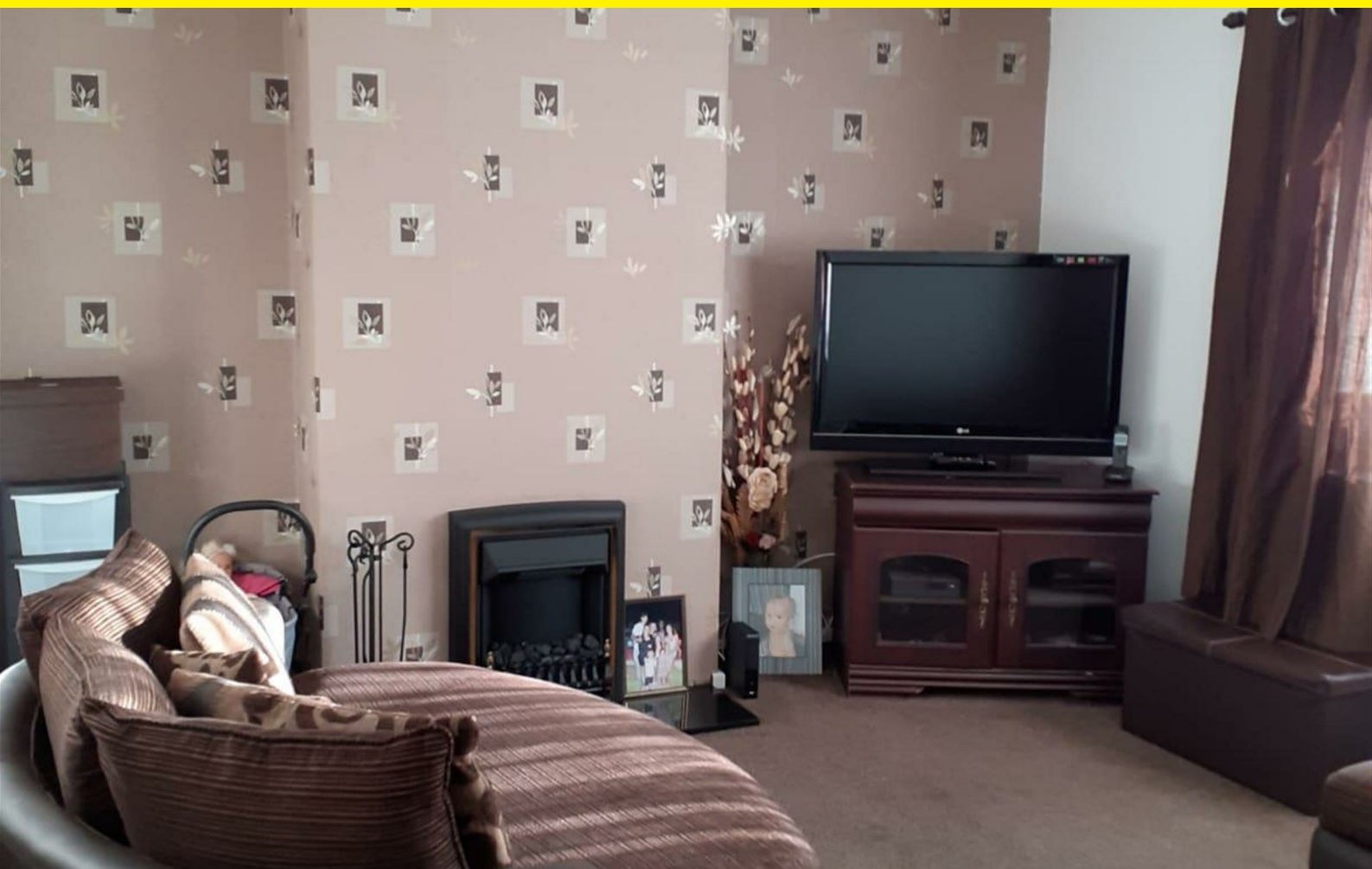




15 Bowles Green, Enfield EN1 4SU
£430,000



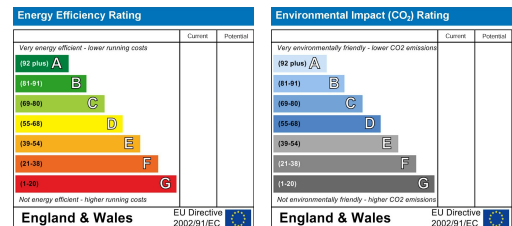


On offer for sale is this ideal family home which has been designed to a high specification throughout. This readymade home comprises of a well sized front reception, large kitchen/diner area with contemporary integrated appliances, three bedrooms, fully fitted family bathroom, separate W/C, sufficient storage cupboards and large rear garden with summer house.



This ideal family home is conveniently situated 0.2 miles away from Turkey Street Station and is also located extremely close to the M25 allowing easy commuting access for commuters. Local amenities, pubs and restaurants are within walking distance of the property.

To arrange your viewing, please contact Capital Homes on 0208-342-5555, early viewings highly recommended in order to avoid disappointment!!



1 Turnpike Lane
London
N8 0EP

0208 342 5555
info@capitalhomesestates.co.uk
www.capitalhomesestates.co.uk

Agents Note: Whilst every care has been taken to prepare these particulars, they are for guidance purposes only. All measurements are approximate and for general guidance purposes only and whilst every care has been taken to ensure their accuracy, they should not be relied upon and potential buyers/tenants are advised to recheck the measurements