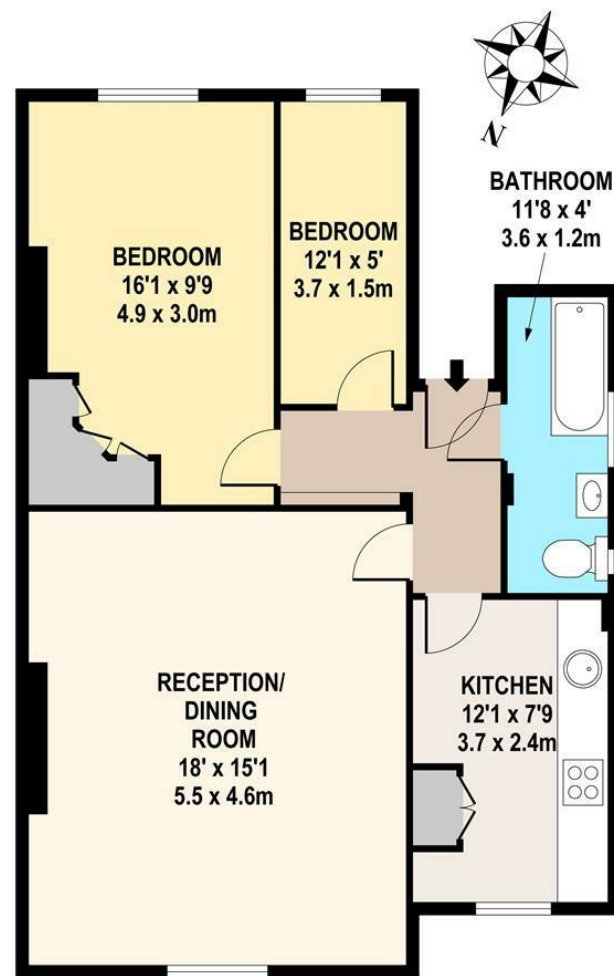


## Lordship Park, N16



**SECOND FLOOR  
 APPROX. FLOOR  
 AREA 690 SQ.FT.  
 (64.1 SQ.M.)**

Whilst every attempt has been made to ensure the accuracy of the floor plan contained here, measurements of doors, windows, rooms and any other items are approximate and no responsibility is taken for any error, omission or mis-statement. This plan is for illustrative purposes only and should be used as such by any prospective purchaser. The services, systems and appliances shown have not been tested and no guarantee as to their operability or efficiency can be given.



## £1,625 Per Month

An absolutely stunning two bedroom flat set on the top floor of this Victorian property. Internally the property has been very well maintained by its present owners and has an abundance of period features including stripped floor boards, sash windows and fireplace.

The property comprises of one double and one single bedroom, bathroom, spacious kitchen and large reception. Lordship Park is moments away from Clissold Park and also within 5-10minutes walk of Church Street with its array of bars, shops and restaurants.

