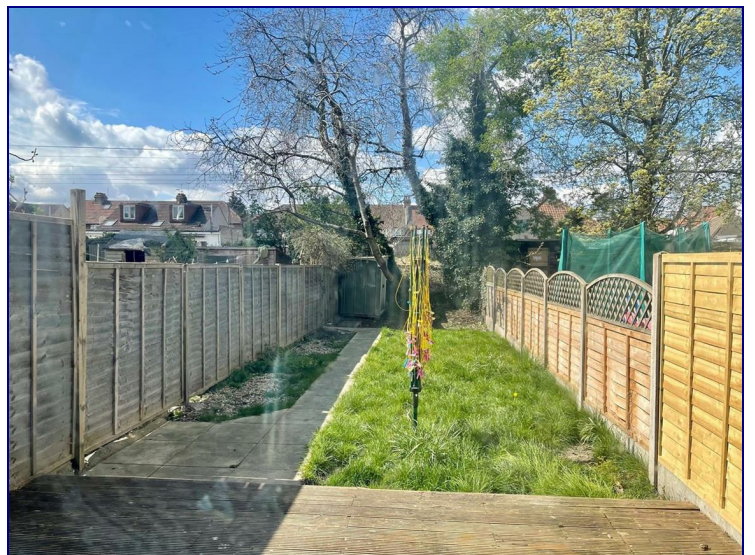


Croyland Road, London, N9 7BD



£1,500 PCM

NEW TO THE MARKET

Kings is proud to introduce this newly refreshed SPACIOUS 2 bedroom house in the popular Croyland Road. This house includes a FAMILY SIZE reception and kitchen, good sized bedrooms with a LARGE garden

Just minutes away from Edmonton Green station and shopping center.

AVAILABLE NOW!! CALL NOW TO BOOK A VIEWING!



Energy Efficiency Rating		
	Current	Potential
<i>Very energy efficient - lower running costs</i>		
(92 plus) A		
(81-91) B		
(69-80) C		
(55-68) D		
(39-54) E		
(21-38) F		
(1-20) G		
<i>Not energy efficient - higher running costs</i>		
England & Wales	EU Directive 2002/91/EC	

Environmental Impact (CO ₂) Rating		
	Current	Potential
<i>Very environmentally friendly - lower CO₂ emissions</i>		
(92 plus) A		
(81-91) B		
(69-80) C		
(55-68) D		
(39-54) E		
(21-38) F		
(1-20) G		
<i>Not environmentally friendly - higher CO₂ emissions</i>		
England & Wales	EU Directive 2002/91/EC	

