



1,130
sq ft



3



1



2

REDBRIK
ESTATE AGENTS



Helping you find
your home at...

Manvers Road, Walkley, Sheffield
Guide Price £190,000 to £200,000

Guide Price £190,000 to £200,000 Located in the sought after suburb of Walkley is this well presented three bedroom mid-terrace house.

- Three Bedroom Mid-Terrace House
- Good sized Lounge
- Separate Dining Room
- Fitted Kitchen With Freestanding Appliances
- Three Double Bedrooms
- Bathroom With Fitted Three-Piece Suite
- Large Enclosed Rear Garden
- Great Location
- uPVC Double Glazing, Gas Central Heating
- Energy Rating: TBC, Tenure: Freehold.





£190,000 to £200,000 (Guide Price)

This is for my family...

- This well presented property benefits two reception rooms, including a generous lounge which features a large bay window & log burner, separate dining room and newly fitted kitchen with freestanding appliances on the ground floor.
- Two well proportioned bedrooms, and a three-piece bathroom suite to the first floor.
- Stairs then lead to the second floor with a good sized attic bedroom/games room featuring a rear facing Velux window.
- To the rear is a large garden with lawn, patio area, and a number of fruit trees, making this an ideal space for adults to entertain whilst also allowing a safe environment for children to play.



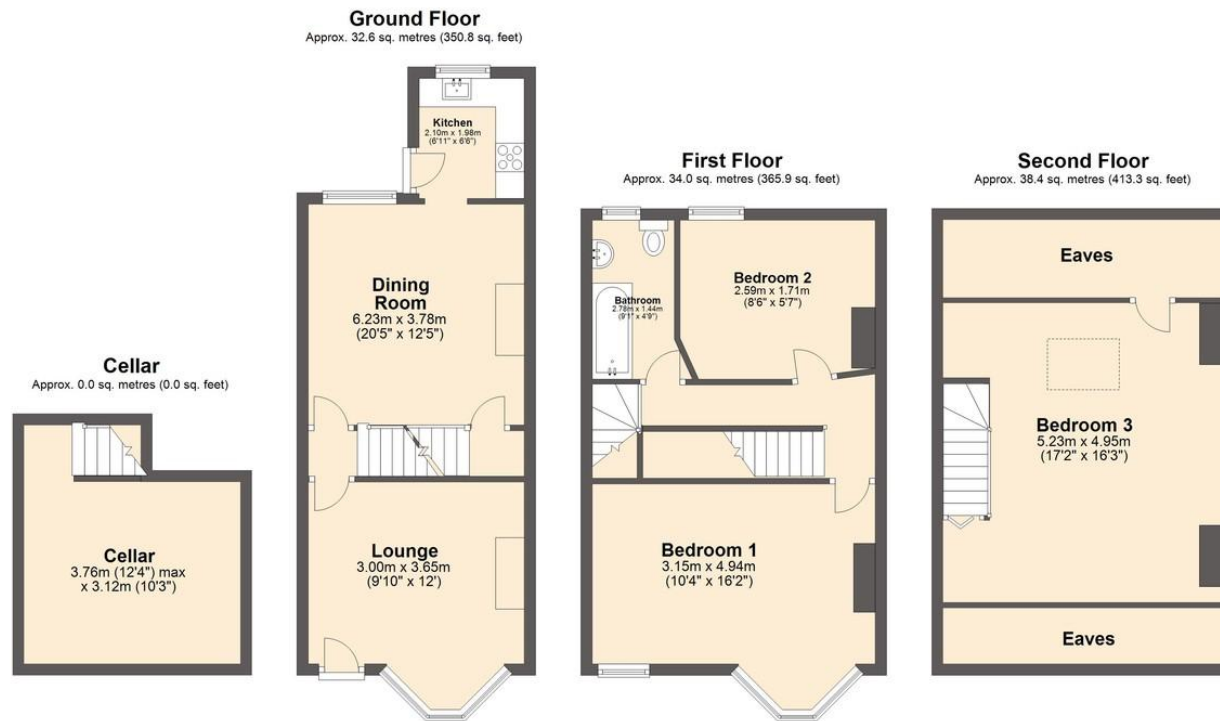
Buying just for me, or with my partner...

- Occupying a cul-de-sac position, on a quiet road, the property will be perfect for first time buyers and professionals alike.
- Deceptively spacious, the accommodation is very flexible, offering spaces that can be utilised for a number of purposes.
- The current owners have recently updated the electrical consumer unit, along with installing a new boiler in 2020.
- It's situated in a prime location, with great schools for children of all ages, and only a short distance from Hillsboroughs many bars, shops and amenities.

I am looking for investment...

- With no onward chain, and beautifully decorated throughout, the property is ready for your tenant to move straight in.





Total area: approx. 105.0 sq. metres (1130.1 sq. feet)

We endeavour to make these particulars as accurate as possible, but they should only be used as guidance and they do not constitute any part of the contract. All measurements are approximate and no guarantees are made to the services, heating systems, appliances (if any) or fittings as to their working order and no warranty can be given or implied.

You may download, store and use this material for your own personal use and research. You may not republish, retransmit, redistribute or otherwise make the material available to any party or make the same available on any website, on or offline service or hard copy without the website owner's express written consent. The website owner's copy right must remain on all reproductions of material taken from this website.