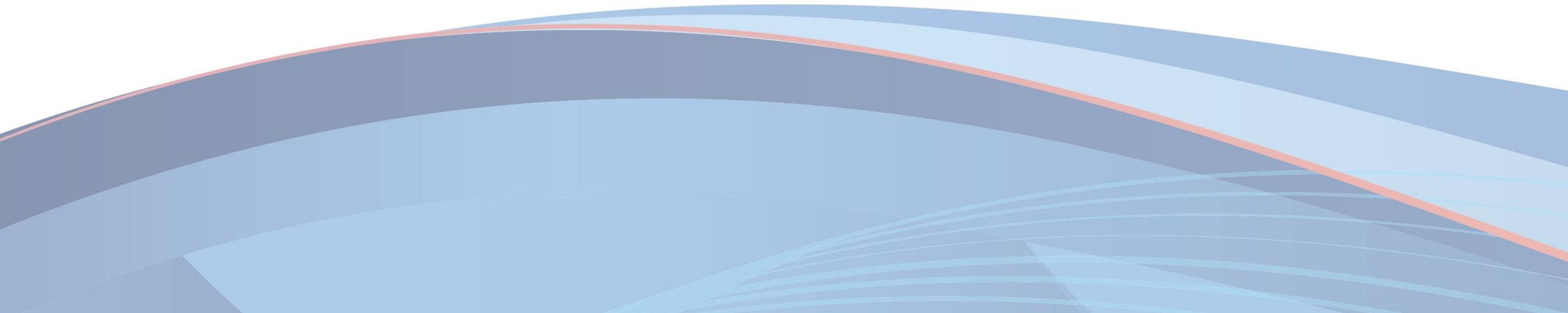




53 St. Ann Street, Salisbury, SP1 2DX

Guide Price £475,000

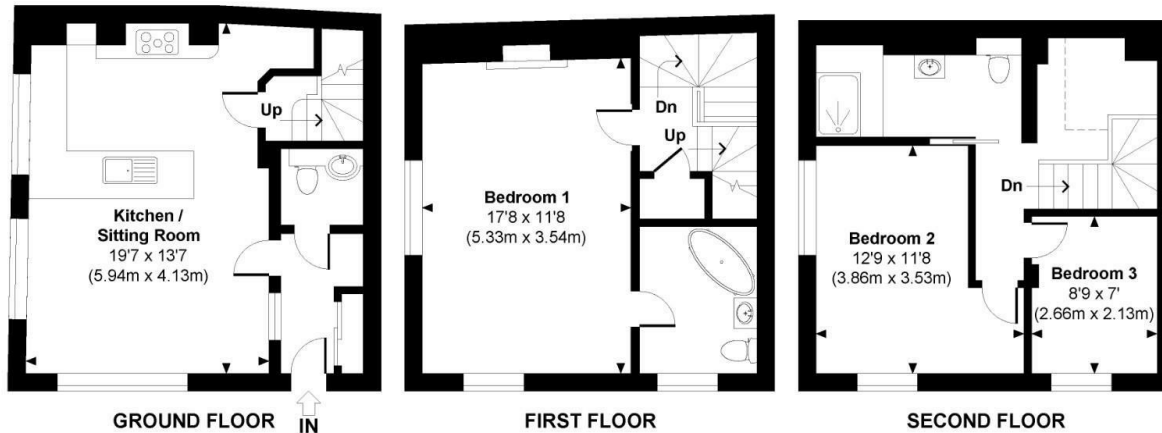
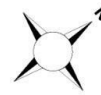






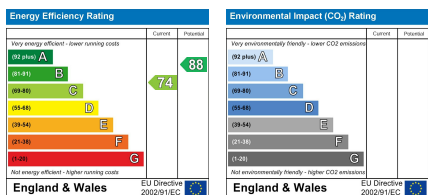
St Anne Street

Approximate Gross Internal Area
 Total = 1065 Sq Ft / 98.89 Sq M
 Includes areas with Restricted room height.



© www.propertyfocus.co | Professional Property Photography & Floorplans
 This plan is for illustrative purposes only and is not to scale. If specified, the Gross Internal Area (GIA), dimensions, North point orientation and the size and placement of features are approximate and should not be relied on as a statement of fact. No guarantee is given for the GIA and no responsibility is taken for any error, omission or misrepresentation.

Indicates restricted room height less than 1.5m.



49 High Street Salisbury Wiltshire SP1 2PD
01722 337575
www.myddeltonmajor.co.uk

Myddelton & Major for themselves and for the vendors or lessors of this property whose agents they are give notice that: – i) the particulars are set out as a general outline only for the guidance of intended purchasers or lessees, and do not constitute part of an offer or contract. ii) all descriptions, dimensions, reference to condition and necessary permissions for use and occupation, and other details are given without responsibility and any intending purchasers or tenants should not rely on them as statements or representations of fact, but must satisfy themselves by inspection or otherwise as to the correctness of each of them. iii) no person in the employment of Myddelton & Major has any authority to make or give any representation or warranty whatever in relation to this property.