

# Sherborne Street

Cheltenham GL52 2JY

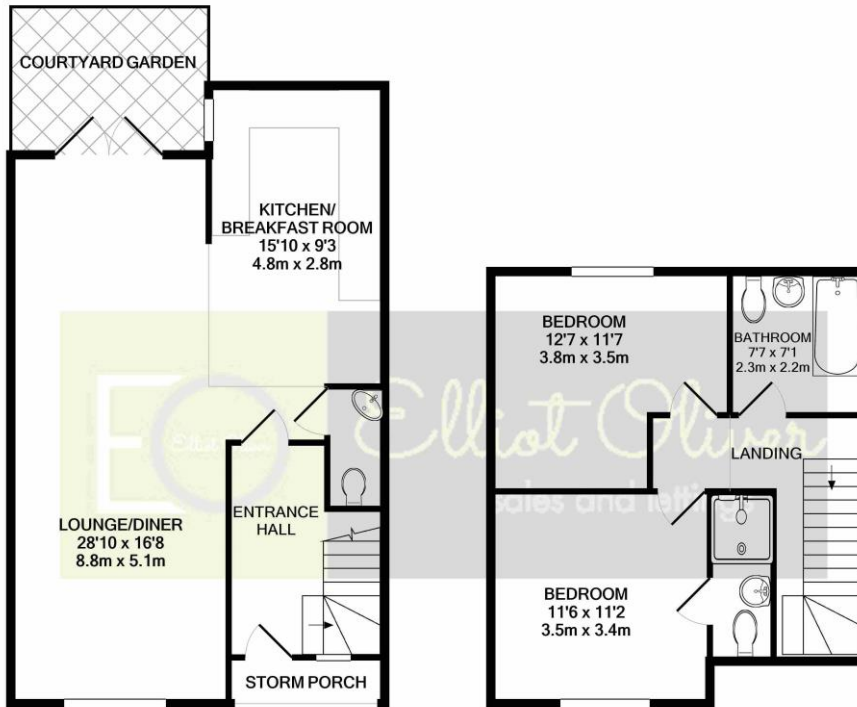


## Sherborne Street, Cheltenham GL52 2JY

An exciting new development with only five beautifully designed freehold new homes. These stunning properties are built by a family run, very respectable, local developers Markey Construction.

The Wimborne is a two double bedroom end of terrace house set over two floors with open plan living in mind. Located on a quiet Cul de Sac in the popular location of Fairview. The accommodation briefly comprises of: Open plan living / kitchen / diner, downstairs WC, two double bedrooms with an ensuite to master, a family bathroom and courtyard garden. The property further benefits from 10 years builders guarantee, double glazing, gas fired central heating, permit parking, within short walking distance to local amenities, shops, bars, restaurants, John Lewis and Cheltenham Town Centre.



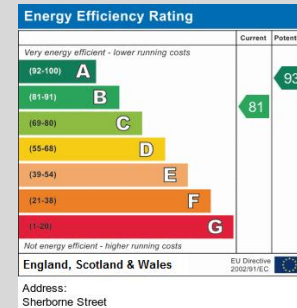


GROUND FLOOR  
APPROX. FLOOR  
AREA 600 SQ.FT.  
(55.8 SQ.M.)

1ST FLOOR  
APPROX. FLOOR  
AREA 428 SQ.FT.  
(39.8 SQ.M.)

TOTAL APPROX. FLOOR AREA 1028 SQ.FT. (95.5 SQ.M.)

Whilst every attempt has been made to ensure the accuracy of the floor plan contained here, measurements of doors, windows, rooms and any other items are approximate and no responsibility is taken for any error, omission, or mis-statement. This plan is for illustrative purposes only and should be used as such by any prospective purchaser. The services, systems and appliances shown have not been tested and no guarantee as to their operability or efficiency can be given  
Made with Metropix ©2020



**OFFICE**  
101 Promenade,  
Cheltenham,  
Gloucestershire, GL50  
1NW  
info@elliotoliver.co.uk

**Agents Note:** Whilst every care has been taken to prepare these sales particulars, they are for guidance purposes only. All measurements are approximate and for general guidance purposes only and whilst every care has been taken to ensure their accuracy, they should not be relied upon and potential buyers are advised to recheck the measurements