



## City Link, Hessel Street, Salford

£725 PCM

Luxury and convenience in one - that's what you'll find at City Link.

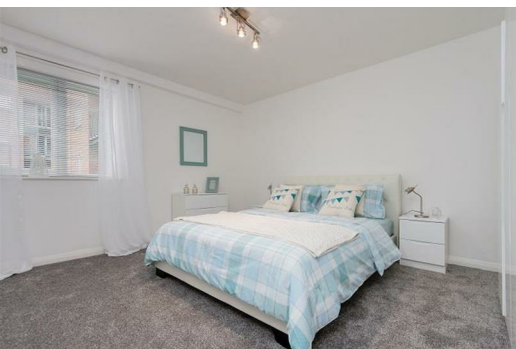
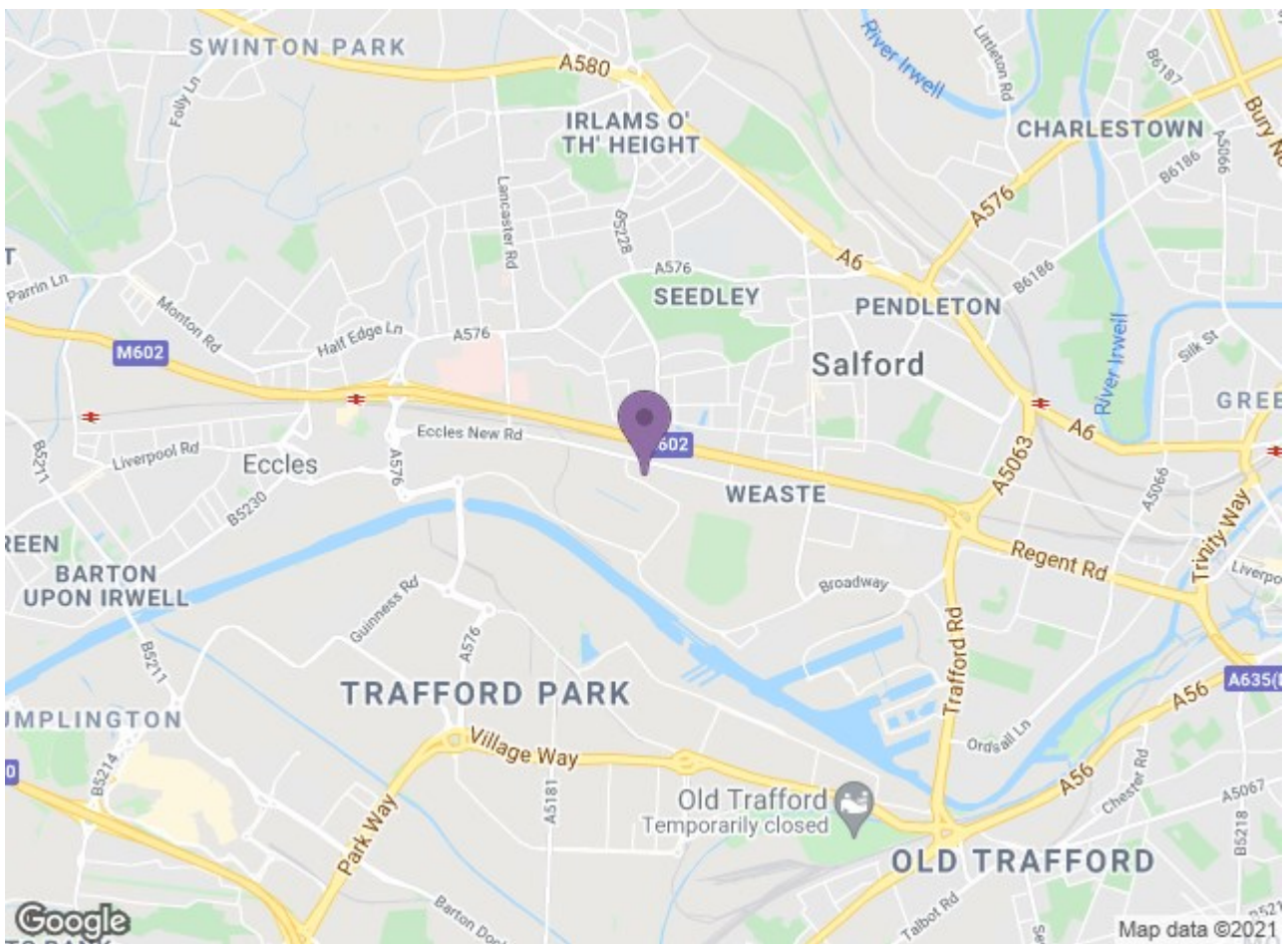
The centrepiece of this three-bedroom property is the open plan kitchen/lounge complete with tiled kitchen area, high quality tables, seats, sofas and a large window which truly brings this apartment to life. The bedrooms are nice sized doubles so you'll be able to kick your shoes off after a long day, stretch out and enjoy the peaceful surroundings. This spacious property also benefits from soft carpets and a nice sized bathroom in a lovely white finish.

City Link is just opposite the bus stop and the Weaste Metrolink stop. MediaCityUK is just a stone's throw away and travelling to and from the city centre is an absolute breeze.

If you're interested in having a closer look, or have any questions, do get in touch. And just so you know, the pictures for this apartment are for marketing purposes only. The internal fixtures, fittings and furnishings may vary.

\*Available 17th May 2021\*





Energy Efficiency Rating		Environmental Impact (CO <sub>2</sub> ) Rating	
Current	Potential	Current	Potential
<p>Energy Efficiency Rating: B (71) / A (83)</p>		<p>Environmental Impact (CO<sub>2</sub>) Rating: B (78) / A (78)</p>	