



Charles Louis Homes Ltd
4 Bolton Street
Ramsbottom
Bury
BLO 9HX

CHARLES LOUIS
HOMES LIMITED

E propertyenquiries@charleslouis.co.uk
T 0161 959 0166
www.charleslouishomes.co.uk

Ground Floor



Directions

Energy Efficiency Rating		Environmental Impact (CO ₂) Rating	
Current	Potential	Current	Potential
74	78		

EU Directive 2002/91/EC

3 Blantyre Street
Castlefield, Manchester, M15 4EG
£775 Per month



- Stunning Central Castlefield Location
- Open Plan Lounge & Kitchen Area
- Utility & Storage Space
- Secure Building, Lift to All Floors

- Close To Waterside Bars & Restaurants
- Two Double Bedrooms, Spacious Bathroom
- Well Presented & Ready To Occupy
- Virtual Viewing Available

These particulars, whilst believed to be accurate are set out as a general outline only for guidance and do not constitute any part of an offer or contract. Intending purchasers should not rely on them as statements of representation of fact, but must satisfy themselves by inspection or otherwise as to their accuracy. No person in this firm's employment has the authority to make or give any representation or warranty in respect of the property.

3 Blantyre Street

Castlefield, Manchester, M15 4EG

****SITUATED IN CASTLEFIELD CLOSE TO WATERSIDE BARS & RESTAURANTS** OPEN PLAN LOUNGE & KITCHEN** TWO DOUBLE BEDROOMS**AVAILABLE NOW****

Charles Louis are delighted to offer to let this well presented and spacious apartment situated on the 7th floor of this secure, lift served complex in the heart of Castlefield, within close proximity of the popular Waterside bars & restaurants. Ideal for a professional working in the City centre, this two bedroom apartment is available for immediate occupation and benefits from having electric wall heaters throughout, a modern fitted kitchen and bathroom, and storage/utility space.

Take the virtual tour and enquire now to arrange your appointment to view.

Entrance Hall

Private entrance door opens into the hallway with an electric wall heater, leading to;

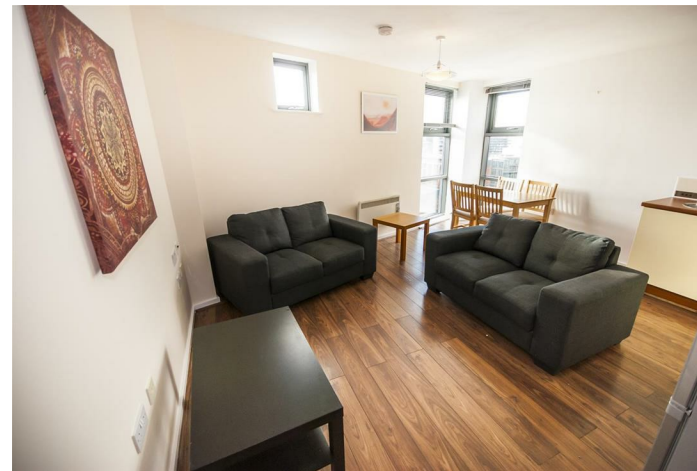
Open Plan Lounge & Kitchen Area

Living area with laminate wood effect flooring, floor to ceiling windows looking out over the city centre, two electric wall heaters, TV and power points.

Kitchen area fully fitted with a range of wall and base units in high gloss cream with contrasting work surfaces, inset sink and drainer unit, built in electric oven and hob with extractor fan, and ample power points.



Alternate View



Bedroom One

With window overlooking the city centre, electric wall heater and power points.



Bedroom Two

With window overlooking the city centre, electric wall heater and power points.



Utility

Providing a good storage and utility space

Bathroom

Partly tiled with a heated towel rail and three piece bathroom suite in white comprising panel enclosed bath with shower over and screen, low flush WC and hand wash basin.



Main Lobby



Alternate View

